

Parkheath

Sold on Service

Haverstock Hill NW3

£2,900 PCM (£670 per week) - Camden Band D



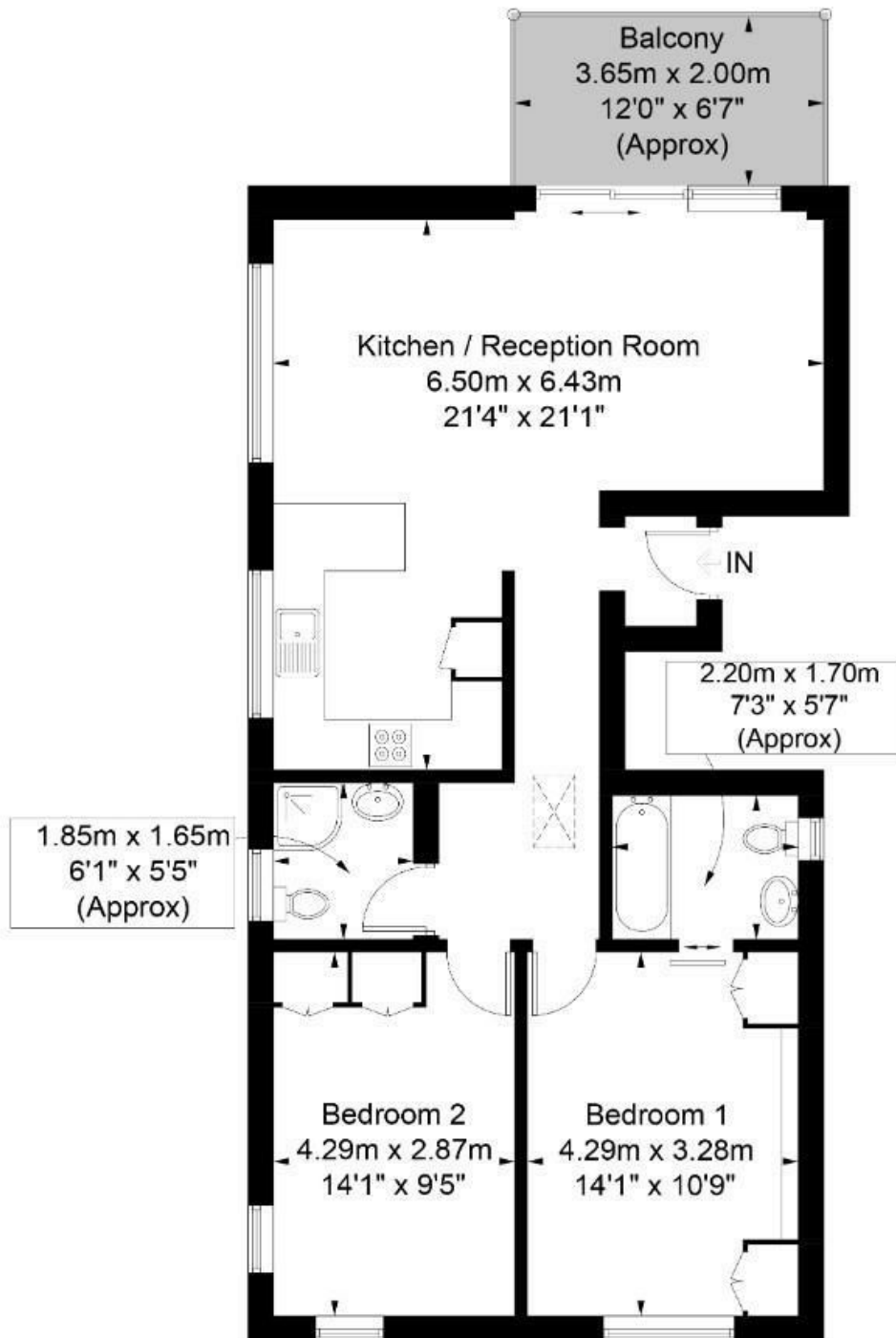
2 double bedroom apartment with balcony
Top floor in small purpose built block
Modern open plan kitchen with breakfast bar
Fully tiled shower room
Ideally located to all the areas amenities

Modern decor with wood floors
Good size reception with balcony access
Main bedroom with ensuite bathroom
Easy walking distance to Belsize Park tube
EPC Rating C, Council Tax: Camden band D

Belsize Park Office 020 7431 3104

Haverstock Hill

Approximate Gross Internal Area = 75.5 sq m / 813 sq ft



Fourth Floor

Illustration for identification purposes only, measurements are approximate, not to scale. FloorplansUsketch.com © 2018 (ID444598)
ELLIE CLAIRE PHOTOGRAPHY LTD

The particulars do not constitute part of an offer or contract. The particulars, including text, photographs and plans, are for the guidance only of prospective purchasers/tenants and must not be relied upon as statements of fact. The descriptions provided therein represent the opinion of the author and whilst given in good faith should not be construed as statements of fact. Nothing in these particulars shall be deemed a statement that the property is in good condition or otherwise or that any services or facilities are in good working order. All measurements are approximate