

Greenstem Way
Cherry Tree Park
Sunderland
SR2 0FP



Greenstem Way

£371,000

INTRODUCTION

BEAUTIFUL 4 DOUBLE BED DETACHED HOME - SET BACK ON THE GREEN WITH VIEWS TO FRONT - LARGE 19FT LOUNGE WITH BAY WINDOW - HOME OFFICE ON GROUND FLOOR WITH VIEWS - SUPERB OPEN PLAN REAR WITH UPGRADED KITCHEN - MASTER BED WITH EN SUITE - FAMILY BATHROOM WITH SEPARATE BATH & SHOWER - GENEROUS GARDEN PLOT WITH EXTENDED PATIO & LAWNS - DETACHED GARAGE WITH MULTI-CAR DRIVEWAY ...

ENTRANCE HALL

Entrance via GRP double-glazed door. Laminate wood-effect flooring, radiator, centrally positioned staircase leading to the first floor landing, 4 doors leading off, 1 to home office, 1 to lounge, 1 to wc, 1 to dining kitchen.

HOME OFFICE

Lovely size home office for those wanting a separate space for working from home. Carpet flooring, double radiator, white uPVC double-glazed window with lovely views over the green.

LOUNGE

Lovely size large spacious lounge with carpet flooring, 2 double radiators, front facing white uPVC double-glazed bay window with views over the green. This room is a large living room and is large enough to accommodate most arrangements of furniture.

W C

Vinyl wood effect flooring, radiator, side facing white uPVC double-glazed window. Quality fittings with Sottini porcelain sink with chrome tap, toilet with low level cistern, built in cupboard providing useful storage.

DINING KITCHEN

Measurements taken at widest points.

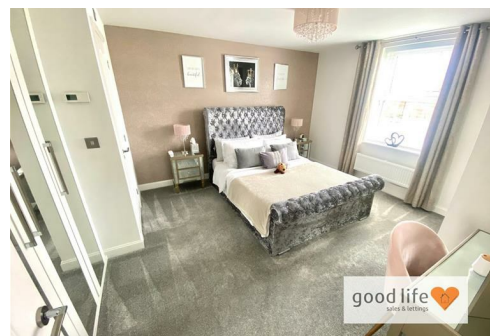
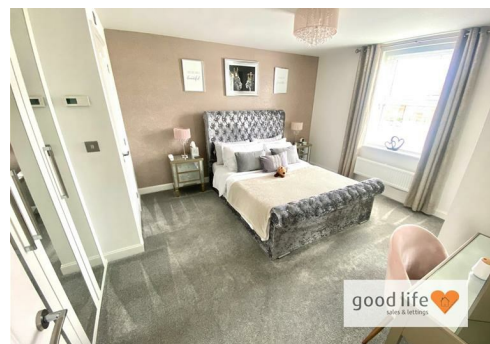
A lovely space which is unique to this particular style of property with laminate wood-effect flooring, 2 double radiators, rear facing white uPVC double-glazed window and fabulous white uPVC double-glazed virtually floor to ceiling windows with double patio doors in the middle leading out and with views of the rear patio and garden. Stylish range of wall and floor units forming a designer style kitchen with quartz work surfaces. Integrated double electric AEG oven, 5 AEG gas hob with matching designer style extractor and glass splash back, inset stainless steel sink with bowl and a half, stylish monobloc tap. Integrated double fridge/freezer, integrated dishwasher, integrated wine cooler. Door leads off to separate utility.

UTILITY

Laminate wood-effect flooring continued from the kitchen, matching wall and floor units to the main kitchen with quartz work surfaces also in the utility. Stainless steel sink with single bowl and drainer and monobloc tap, space and plumbing for a washing machine, double-glazed external door leading directly to patio.

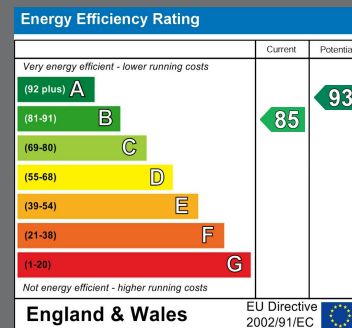
FIRST FLOOR LANDING

Radiator, white uPVC double-glazed window, loft hatch, 5 doors leading off, 4 to bedrooms and 1 to bathroom, built in cupboard housing the quality central heating hot water tank, which ensures pressure to taps and shower is first rate.



Local Authority
Sunderland

Council Tax Band
E



Agents Note: Whilst every care has been taken to prepare these particulars, they are for guidance purposes only. All measurements are approximate and are for general guidance purposes only and whilst every care has been taken to ensure their accuracy, they should not be relied upon and potential buyers/tenants are advised to recheck the measurements



Contact

0191 565 6655

info@goodlifehomes.co.uk

www.goodlifehomes.co.uk

Good Life Homes - Sales

46 Windsor Terrace
Sunderland
Tyne and Wear
SR2 9QF



good life 
sales & lettings