



Let **UK** Home

1 Bedrooms

Flat

Located in London

£3,500 Per Month



info@letukhome.co.uk

<https://www.letukhome.co.uk/>

01795 358 886



West End Gate London

W2 1BB



Let UK Home are delighted to offer this brand new one bedroom apartment in The Residences, part of West End Gate development.

This luxurious apartment features a meticulously designed open-plan living, kitchen, and a dining room. The bedroom will come with built-in wardrobes, complemented by a spacious family bathroom. Virtual tour is available.

The development is situated between two renowned parks in London. To the south lies Hyde Park, while Regent's Park is to the northeast. The nearby Regent's Canal, famously known as "Little Venice," flows through the area, offering serene and charming water views that create a delightful and refreshing atmosphere.

Along the banks of the Regent's Canal, a variety of restaurants, cafes, and bars abound. World-famous shopping districts such as Mayfair, Soho, and Harrods are within easy reach, with the West End shopping paradise just a short stroll away, allowing residents to fully enjoy the excitement and endless pleasures of London.

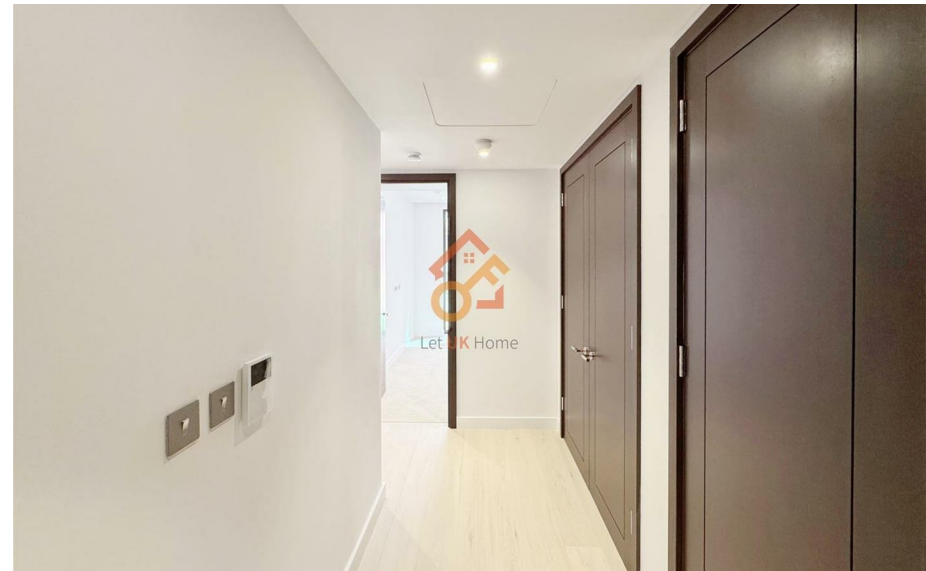
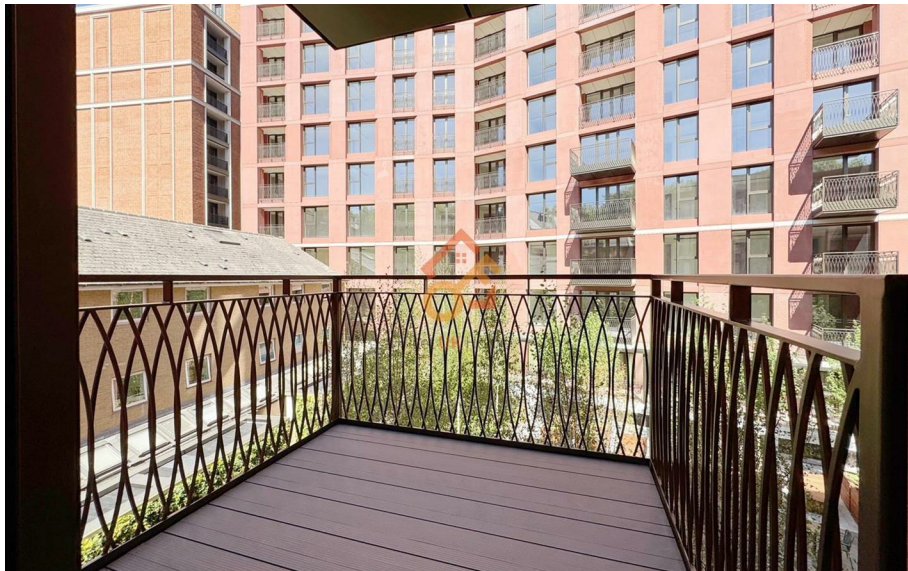
West End Gate will offer high-quality leisure facilities, including a spacious, five-star hotel-style lobby, a 20-meter swimming pool, a spa area with a sauna and steam room, and a fully equipped gym adjacent to rest rooms. Additionally, the development will feature a private cinema and a comprehensive security system.

West End Gate London

£3,500 Per Month

- 2nd Floor
- Sauna & Steam Room
- Concierge Service & 24h Security
- Paddington
- Between Hyde Park and Regent's Park

- Swimming Pool & The Spa & The Gym
- Cinema & Game Room
- Virtual Tour Available
- Regent's Canal

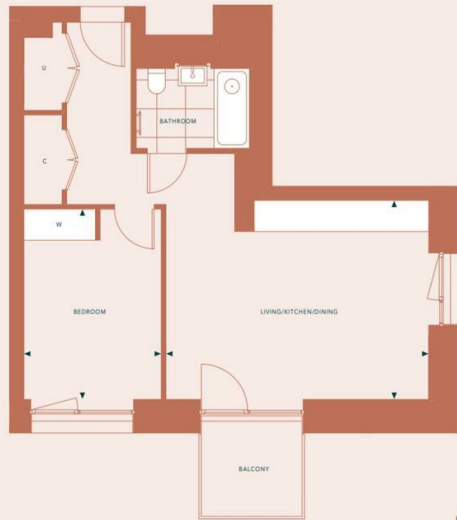


One Bedroom Apartment



Level		
Living/Kitchen/Dining	5.51 x 4.17	18'0" x 13'8"
Bedroom	3.99 x 2.88	13'1" x 9'5"
Total Internal Area	54.00m²	581.25 ft²

Key
W Wardrobe
C Cupboard
U Utility



Floorplans shown are for approximate measurements only. Exact layout and sizes may vary. All measurements may vary within a tolerance of 3%. To increase legibility these plans have been sized to fit the page, therefore each plan may be at a different scale to others within this brochure.

View from 3rd floor



Let **UK** Home

3F 2 Eastbourne Terrace
Paddington
London
W2 6LG

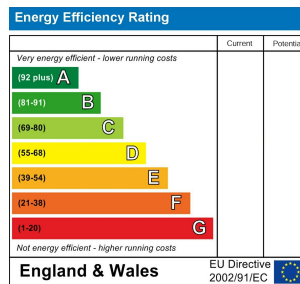
01795 358 886

info@letukhome.co.uk

Council Tax Band:

Local Authority:

Agents Note: Whilst every care has been taken to prepare these particulars, they are for guidance purposes only. All measurements are approximate and are for general guidance purposes only and whilst every care has been taken to ensure their accuracy, they should not be relied upon and potential buyers/tenants are advised to recheck the measurements.



<https://www.letukhome.co.uk/>