



1 Spectrum Way, SW18

£365,000

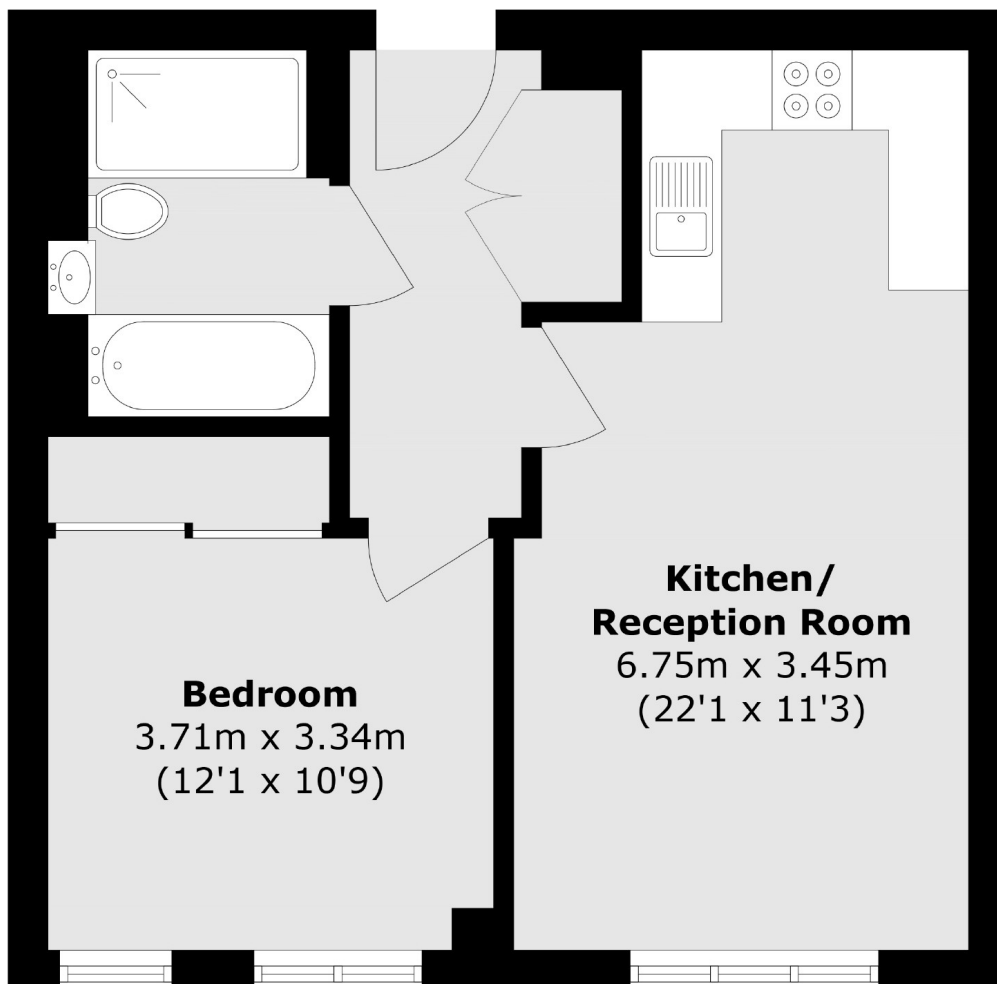
A modern flat in The Filaments, a prestigious development by Mount Anvil built in 2013. The flat has a long lease, a concierge service and a stunning open plan layout.

The Filaments is close to Wandsworth Town, East Putney and Southfields. There are plenty of handy buses which stop outside the development, King George's Park is opposite and Southside shopping centre is over the road.

Features

- Modern Flat
- One Bedroom
- One Bathroom
- Open-Plan Living
- Chain Free
- Concierge Service

1 Spectrum Way, Wandsworth, SW18



Total area (approx.): 46.5 sq. m (500.5 sq. ft)