

# clever



## 10 Connaught Avenue

, Plymouth, PL4 7BX

**£900 Per month**



\*\*\* AVAILABLE NOW SPACIOUS 1 BEDROOM APARTMENT WITH PARKING \*\*\*

We have to offer a very spacious 1 bedroom apartment based in Mutley Plain close to all amenities and bus routes. . The apartment has 1 spacious bedrooms with a spacious lounge, kitchen and spacious modern bathroom fitted with the ad on of a jacuzzi bath.

As an older property, it carries a unique character and charm that newer builds often lack, providing a sense of history and warmth. With a Council Tax band of A, this home presents an attractive option for those looking to manage their living expenses effectively.

The property is available now at £900 per month and £900 Deposit.

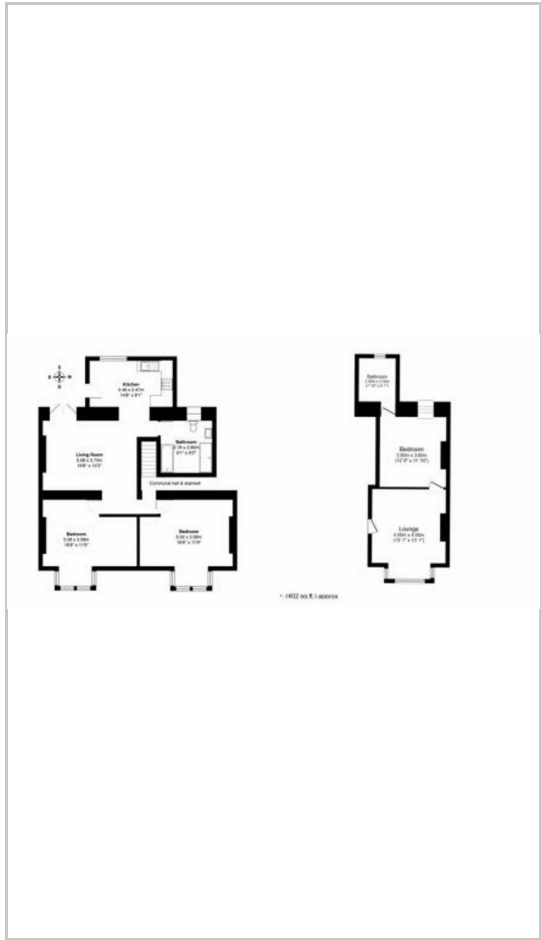
Council Tax A EPC C



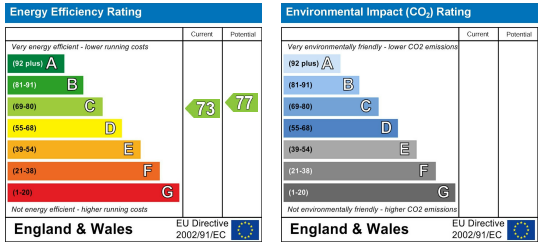
### Area Map



### Floor Plans



### Energy Efficiency Graph



These particulars, whilst believed to be accurate are set out as a general outline only for guidance and do not constitute any part of an offer or contract. Intending purchasers should not rely on them as statements of representation of fact, but must satisfy themselves by inspection or otherwise as to their accuracy. No person in this firm's employment has the authority to make or give any representation or warranty in respect of the property.