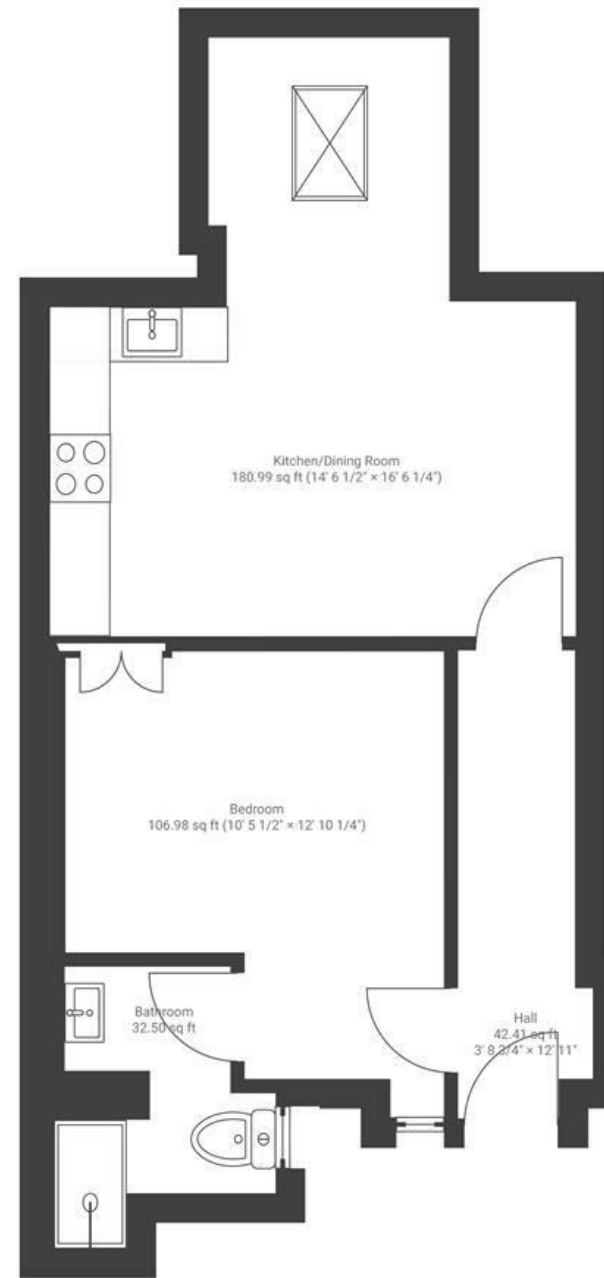


Sydenham Road

KNOWLE

APPROXIMATE FLOOR AREA

35.10 SQM / 377.85 SQFT



FIRST FLOOR

Boardwalk

Sydenham Road

TOTTERDOWN, BRISTOL



£220,000



1 Bedrooms



BS4 3DF



1 Bathrooms

"We have loved living in this flat and starting our family here, particularly sitting under the bright skylight playing board games. The neighbourhood is really friendly and peaceful, with loads of green spaces right on our doorstep."

