



Gresham Road, TW12

£700,000

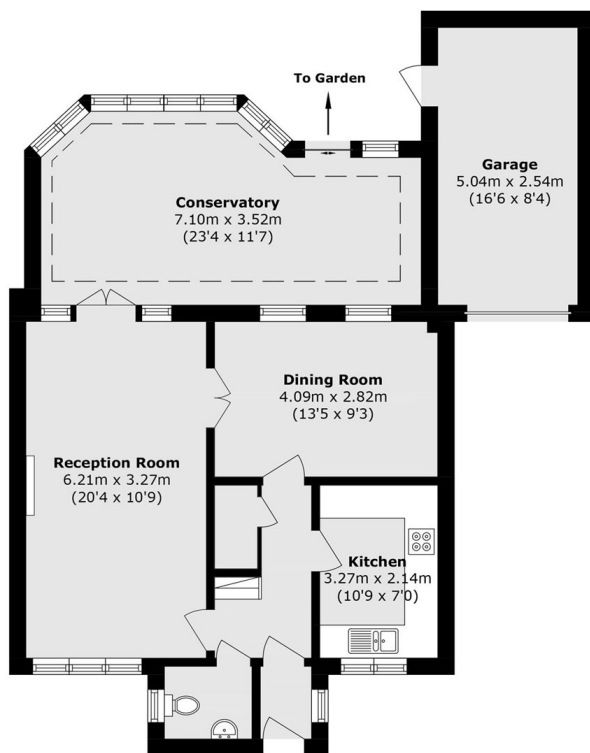
A detached four bedroom house coming with the benefit of no onward chain - making a great long term family home, with scope to extend (STPP), parking and a garage.

Gresham Road is located in the Countryside Development, a short walk from local schools, shops and just under a mile to Hampton Village, Hampton Hill and Royal Bushy Park.

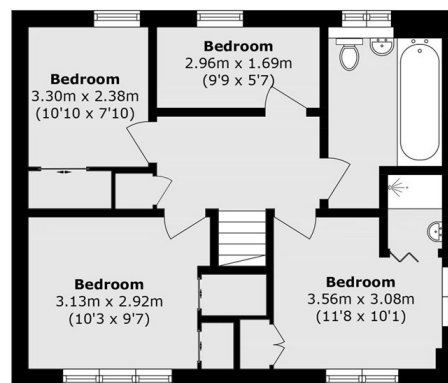
Features

- Detached
- Four Bedrooms
- Garage
- Off Street Parking
- Private Garden
- No Onward Chain

Gresham Road, Hampton, TW12



Ground Floor



First Floor

Total area (approx.): 120.3 sq. m (1294.9 sq. ft)

Garage area (approx.): 12.8 sq. m (137.7 sq. ft)