



**MALLORD STREET,
LONDON, SW3**

**£2,000 Per
Month**

FEATURES

- COUNCIL TAX AND UTILITIES INCLUDED
- FULL FIBRE BROADBAND INTERNET ALSO INCLUDED IN THE RENT
- Art Deco Building
- Separate Bedroom Area
- Close proximity to Kings Road
- A world class array of amenities on your doorstep



Maskells

A picture perfect studio apartment, lovingly maintained and presented in excellent decorative order throughout and inclusive of council tax, utility bills AND full fibre broadband - a significant saving for the incoming tenant amounting to several hundred pounds a month.

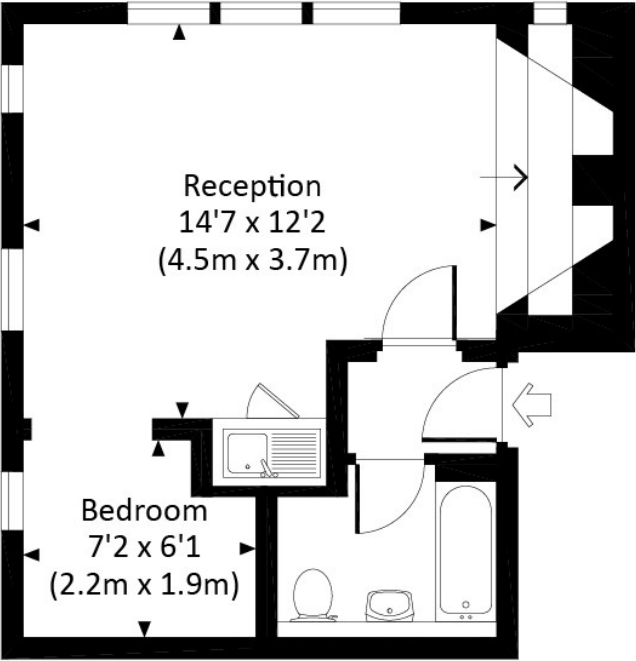
All potential tenants should be advised that administration fees may be applicable when renting a property. Please contact us for more details of these charges. Maskells are members of Propertymark the leading membership body for property agents. We are part of the Propertymark Client Money Protection scheme and a member of The Property Ombudsman Scheme (approved by the Office of Fair Trading) and subscribe to its Codes of Practice for Letting Agents.

Call us on
0207 581 2216

lettings@maskells.com
www.maskells.com

Council Tax Band

MALLORD STREET, SW3
Approx. gross internal area
313 Sq Ft. / 29.1 Sq M.



GROUND FLOOR

All measurements have been made in accordance with RICS Code of Measuring Practice which are approximate only and only for illustrative purposes. For the avoidance of doubt, Dowling Jones Design shall not be held for any reliance on these measurements. © 2017 www.dowlingjones.com 020 7639 9833

Energy Efficiency Rating		
	Current	Potential
Very energy efficient - lower running costs		
(92 plus) A		
(81-91) B		
(69-80) C	73	74
(55-68) D		
(39-54) E		
(21-38) F		
(1-20) G		
Not energy efficient - higher running costs		
England & Wales		EU Directive 2002/91/EC

Agents Note: Whilst every care has been taken to prepare these particulars, they are for guidance purposes only. All measurements are approximate and are for general guidance purposes only and whilst every care has been taken to ensure their accuracy, they should not be relied upon and potential buyers are advised to recheck the measurements.

