



56 Spring Road

Bournemouth, Bournemouth

Council Tax band: B

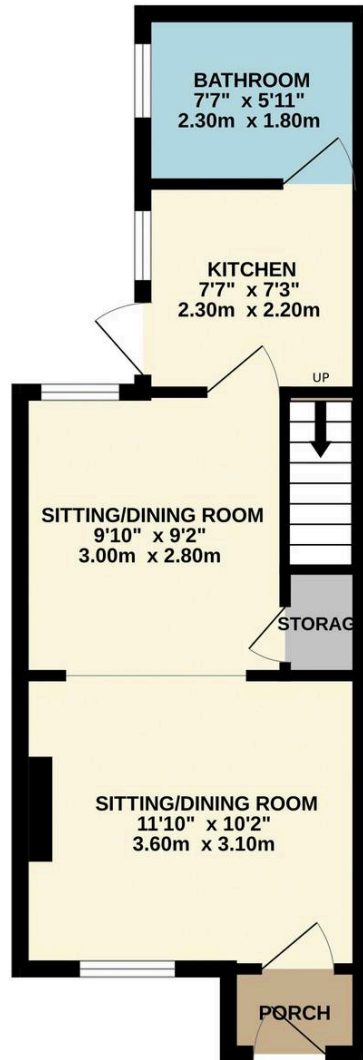
Tenure: Freehold

- Semi Detached House
- Two Double Bedrooms
- Spacious Open Plan Lounge/Dining Room
- Kitchen & Downstairs Family Bathroom
- Private Southerly Facing Rear Garden
- Gas Central Heating & UPVC Double Glazing
- Good Catchment For Several Primary/Secondary Schools
- Easy Reach To Bournemouth Town Centre, Train/Bus Station & All Amenities
- Rental Potential of £1200 to £1250 Per Month
- No Forward Chain

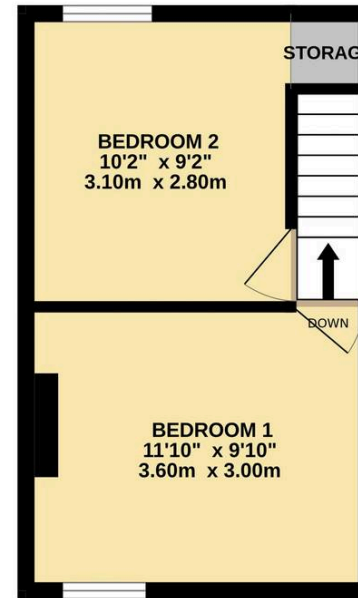




GROUND FLOOR
346 sq.ft. (32.1 sq.m.) approx.



1ST FLOOR
233 sq.ft. (21.7 sq.m.) approx.



TOTAL FLOOR AREA: 579 sq.ft. (53.8 sq.m.) approx.

Whilst every attempt has been made to ensure the accuracy of the floorplan contained here, measurements of doors, windows, rooms and any other items are approximate and no responsibility is taken for any error, omission or mis-statement. This plan is for illustrative purposes only and should be used as such by any prospective purchaser. The services, systems and appliances shown have not been tested and no guarantee as to their operability or efficiency can be given.
Made with Metropix ©2025