



Darlington Court, Station Road, Old Harlow, CM17 0DB
£1,400 Per Month

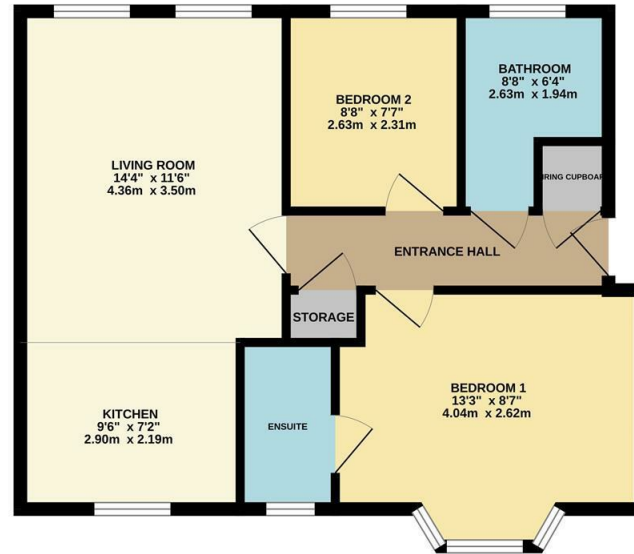


Darlington Court, Station Road, Old Harlow, CM17 0DB

A two bedroom ground floor apartment in a popular gated development within the heart of Old Harlow. With in walking distance to Old Harlow High Street and under a mile to Harlow Mill train station, the property has an entrance hall, bathroom with white three-piece suite, two bedrooms with an en-suite shower room to the main bedroom, there is also a good size lounge/diner which is open plan to the modern fitted kitchen which has a range of fitted units and appliances. The property is accessed via a communal entrance hall & secure door entry system and the allocated parking is to the front. Available NOW on an unfurnished basis.



GROUND FLOOR
568 sq.ft. (52.8 sq.m.) approx.



TOTAL FLOOR AREA: 568 sq.ft. (52.8 sq.m.) approx.
While every attempt has been made to ensure the accuracy of the floorplan contained here, measurements of plots, windows, doors and any other items are approximate and no responsibility is taken for any error, omission or misstatement. The plot is for illustrative purposes only and should be used as a guide only for prospective purchasers. The services, systems and appliances shown have not been tested and no guarantee is given in respect of their operation or efficiency can be given.
Made with Metropack (2023)



Energy Efficiency Rating		
	Current	Potential
Very energy efficient - lower running costs		
(92 plus) A		
(81-91) B		
(69-80) C		
(55-68) D		
(39-54) E		
(21-38) F		
(1-20) G		
Not energy efficient - higher running costs		
	68	80
England & Wales	EU Directive 2002/91/EC	EU Directive 2002/91/EC

Environmental Impact (CO ₂) Rating		
	Current	Potential
Very environmentally friendly - lower CO ₂ emissions		
(92 plus) A		
(81-91) B		
(69-80) C		
(55-68) D		
(39-54) E		
(21-38) F		
(1-20) G		
Not environmentally friendly - higher CO ₂ emissions		
England & Wales	EU Directive 2002/91/EC	EU Directive 2002/91/EC

These particulars, whilst believed to be accurate are set out as a general outline only for guidance and do not constitute any part of an offer or contract. Intending purchasers should not rely on them as statements of representation of fact, but must satisfy themselves by inspection or otherwise as to their accuracy. No person in this firm's employment has the authority to make or give any representation or warranty in respect of the property.

T. 01279 216216 E. info@rjestateagents.co.uk

1 Acorn Mews, Harlow, Essex, CM18 6NA www.rjestateagents.co.uk