



## EDGARLEY TERRACE, SW6

£3,750 per month

Three bedrooms  
Two bathrooms  
Separate kitchen  
Short walk to Putney Bridge

@marshandparsons  
marshandparsons.co.uk

MARSH &  
PARSONS

# ABOUT THE PROPERTY

This extremely well presented apartment is set over the first and second floors of a beautiful well-maintained Victorian house on an attractive, tree-lined street. The property comprises a bright and spacious reception room, large separate eat-in kitchen with integrated appliances, large master bedroom, two further double bedrooms and two modern bathrooms. The property further benefits from an abundance of natural light and from being well presented throughout.

Edgarley Terrace is very well located close to the green open spaces of Bishops Park, excellent shops, restaurants and cafes are close by on Fulham Road and Fulham High Street and great transport links are a short walk to away at

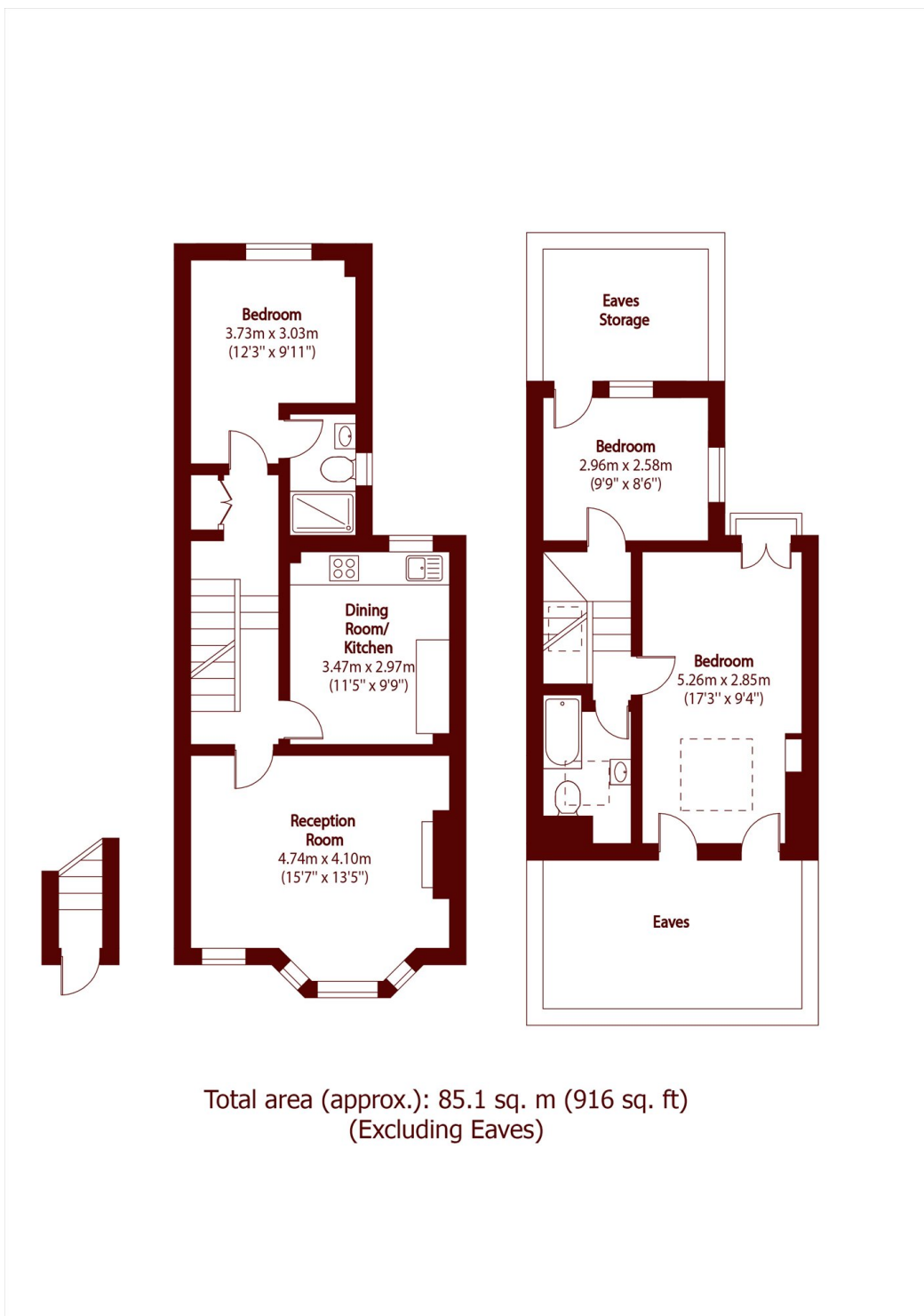








# STEP INSIDE EDGARLEY TERRACE



**Bishops Park**  
020 7368 2480

Energy Rating: We aim to make our particulars both accurate and reliable. However, they are not guaranteed; nor do they form part of an offer or contract. If you require clarification on any points then please contact us, especially if you're traveling some distance to view. Please note that appliances and heating systems have not been tested and therefore no warranties can be given as to their good working order

**MARSH &  
PARSONS**