



Bridge Mill Place
Worsley

Miller Metcalfe
Every step of the way

Bridge Mill Place

Worsley

Detached



4



1

EPC Rating - B

*** Internal Viewing a Must - Stunning Modern Detached Home With Exceptionally Well-Proportioned Family Friendly Living Space, Wonderful Landscaped Gardens, Double Driveway and Garage, Situated Within a Fabulous Cul-de-Sac Setting in a Much Sought After Residential Location, Early Inspection Strongly Advised ***

Situated upon a fabulous modern development of similar homes and within a popular and highly convenient setting, this fabulous, detached home offers well-proportioned living space that is ideally suited to modern lifestyles.

The accommodation comprises an inviting entrance hallway, cloakroom/wc, superb lounge, a splendid open plan fitted dining kitchen with integrated appliances and a generous utility area to the ground floor. On the first floor a landing, four good sized bedrooms (master with a three-piece en-suite shower room/wc) plus a three-piece principal bathroom/wc completes the internal living space. Outside the property is garden fronted with a double driveway and garage offering ample parking. The rear garden has been tastefully landscaped and offers excellent space for children's play, relaxing and al-fresco entertaining.

The location is within easy access to the many shops and amenities Worsley, Tyldesley, Astley and the surrounding areas has to offer including the fantastic Parr Bridge retail park which is practically on the doorstep. It is also well placed for well renowned public and private schooling. It is also ideal for access to major transport links making it ideal for those looking to commute into Manchester city centre and across the Northwest. In contrast to this there is spectacular countryside close to hand including the award winning RHS Bridgewater.

Rarely do homes of this type remain on the market for long and as such, an early internal viewing is strongly advised to avoid disappointment.

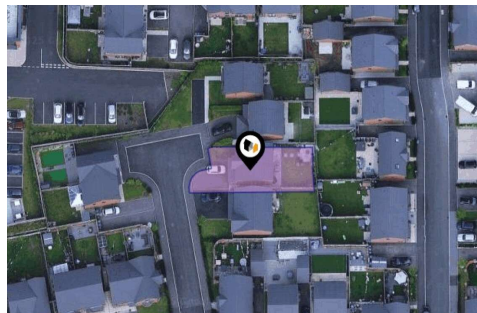
• TENURE
Freehold

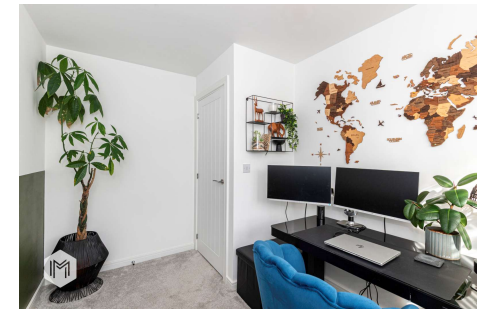
• LOCAL AUTHORITY AND COUNCIL TAX
Wigan - Band E - £2,483 Per Year

• FLOOD RISK
Very Low

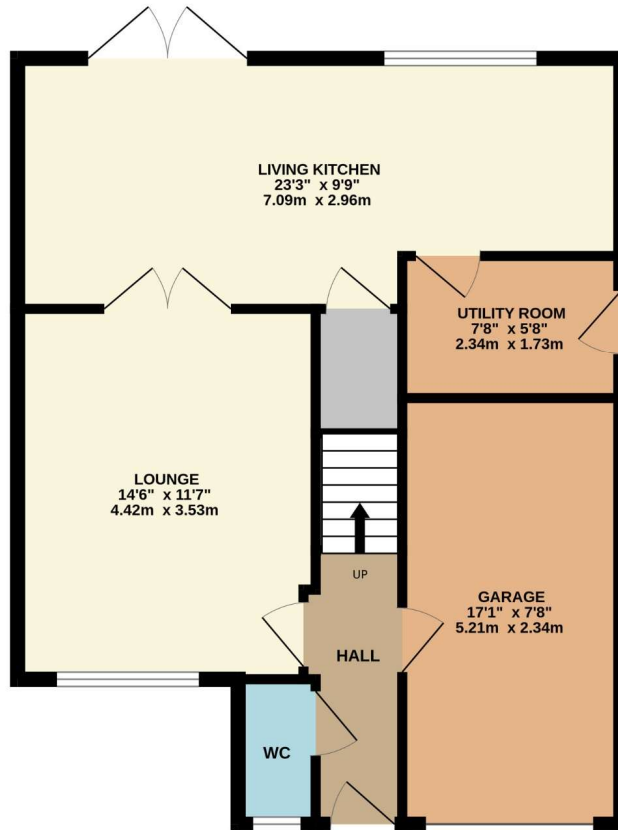
• BROADBAND
Basic - 4 Mbps
Superfast - 80 Mbps
Ultrafast - 1,000 Mbps

• SATELLITE/FIBRE TV AVAILABILITY
BT - Yes
Sky - Yes
Virgin - Yes

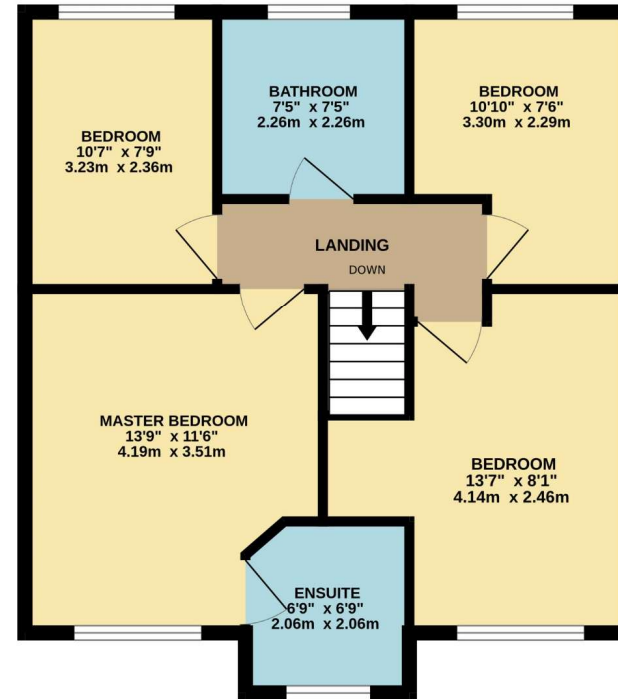




GROUND FLOOR
649 sq.ft. (60.3 sq.m.) approx.



1ST FLOOR
581 sq.ft. (53.9 sq.m.) approx.



TOTAL FLOOR AREA : 1230 sq.ft. (114.3 sq.m.) approx.

Whilst every attempt has been made to ensure the accuracy of the floorplan contained here, measurements of doors, windows, rooms and any other items are approximate and no responsibility is taken for any error, omission or mis-statement. This plan is for illustrative purposes only and should be used as such by any prospective purchaser. The services, systems and appliances shown have not been tested and no guarantee as to their operability or efficiency can be given.
Made with Metropix ©2025

Every attempt has been made to ensure accuracy, however these property particulars are approximate and for illustrative purposes only. They have been prepared in good faith and they are not intended to constitute part of an offer of contract. We have not carried out a structural survey and the services, appliances and specific fittings have not been tested. All photographs, measurements, floor plans and distances referred to are given as a guide only and should not be relied upon for the purchase of any fixture or fittings. Lease details, service charges and ground rent (where applicable) are given as a guide only and should be checked prior to agreeing a sale.