



## **5 Pomona Strand, Old Trafford, M16 0ZL**

### **£253 Per Week**

A 1 BEDROOM APARTMENT FOR RENT WITHIN POMONA STRAND, PART OF THE X1 MANCHESTER WATERS DEVELOPMENT LOCATED ON POMONA ISLAND

RESIDENTS BENEFITS INC: GYM, CINEMA, CONCIERGE, COMM GARDENS & BIKE STORAGE

ONLY 0.2 MILES FROM NEAREST METRO LINK AND SUPERMARKETS NEARBY

WALK TO CITY CENTER AND MEDIA CITY IN UNDER 30 MINUTES

FURNISHED

AVAILABLE FROM 27.02.2026

- LOCATED ON POMONA ISLAND
- PART OF MANCHESTER WATERS X1 DEVELOPMENT
- CLOSE TO MANCHESTER CITY CENTER & MEDIA CITY
- POMONA METRO LINK UNDER 0.2 MILES
- SUPERMARKETS WITHIN CLOSE VICINITY
- CONCIERGE, GYM & CINEMA
- ONE BEDROOM APARTMENT
- AVAILABLE FROM 27.02.2026
- COMMUNAL GARDENS & BIKE STORE
- FURNISHED



## 5 Pomona Strand, Old Trafford, M16 0ZL



POMONA STRAND



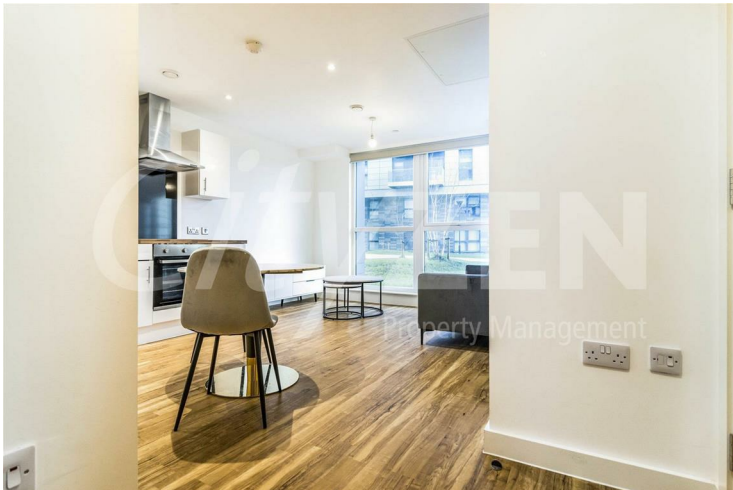
RECEPTION



POMONA STRAND



RECEPTION



RECEPTION



RECEPTION



## 5 Pomona Strand, Old Trafford, M16 0ZL



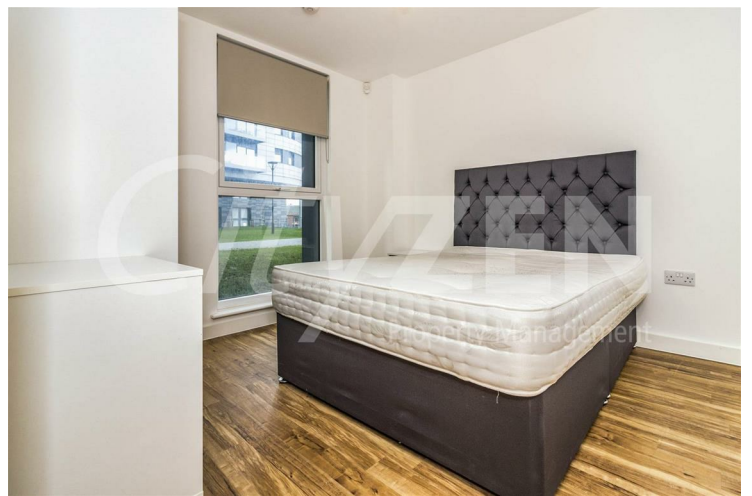
KITCHEN



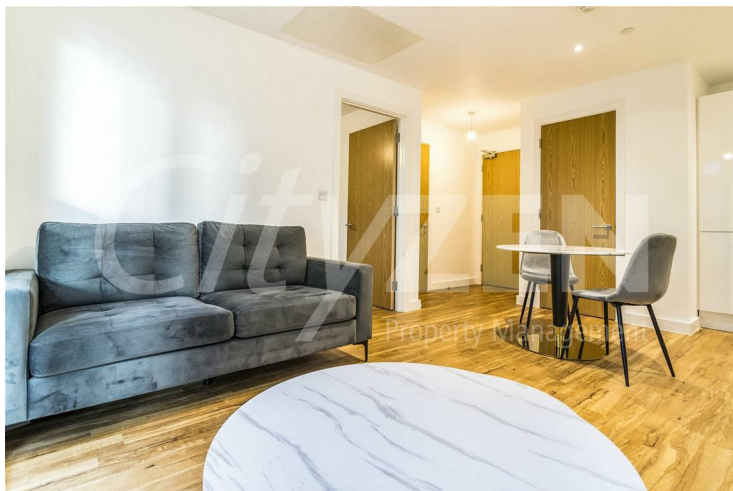
RECEPTION



KITCHEN



BEDROOM



RECEPTION



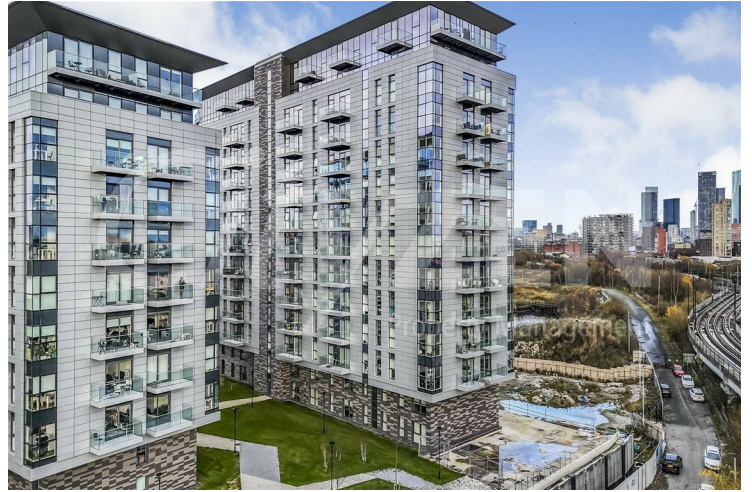
BEDROOM



## 5 Pomona Strand, Old Trafford, M16 0ZL



**BEDROOM**



**POMONA STRAND**



**BATHROOM**



**POMONA STRAND**



**BEDROOM**



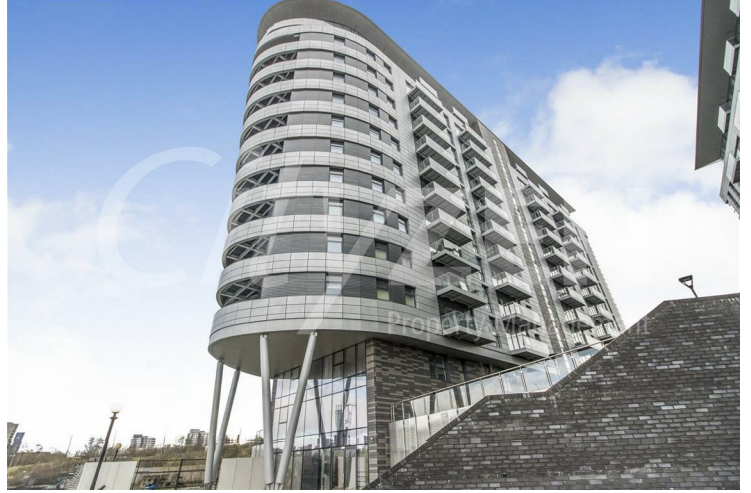
**POMONA STRAND**



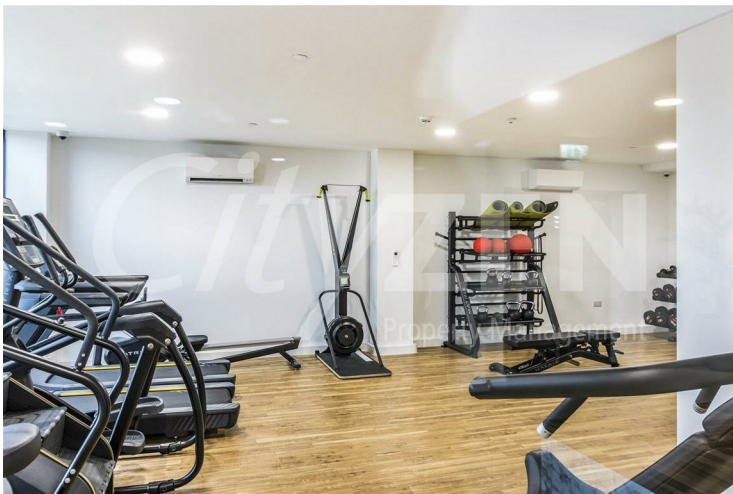
## 5 Pomona Strand, Old Trafford, M16 0ZL



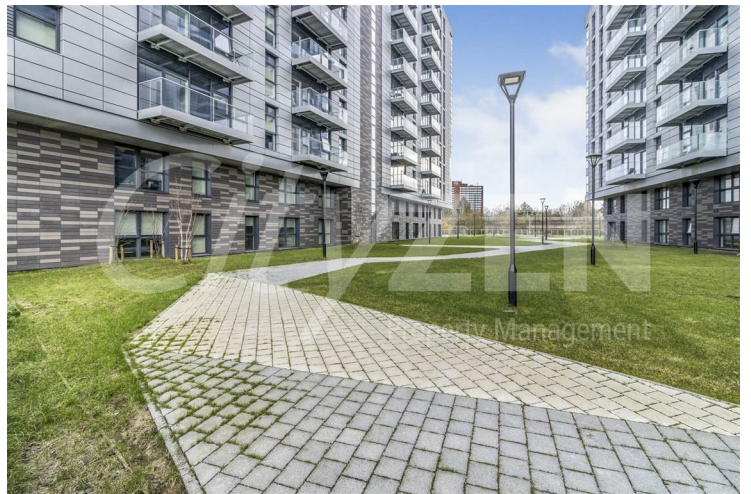
LOBBY



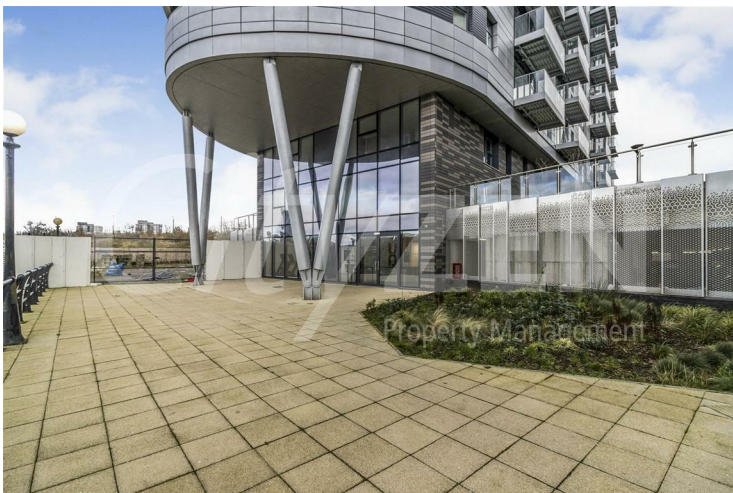
BUILDING ENTRANCE



GYM



COMMUNAL GARDENS

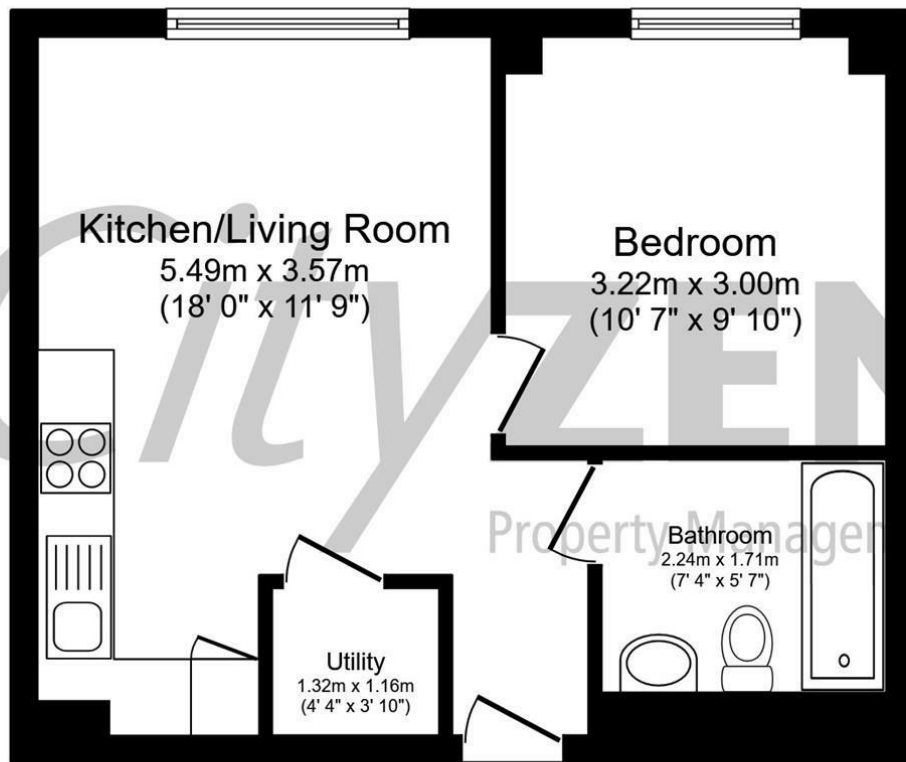


BUILDING ENTRANCE



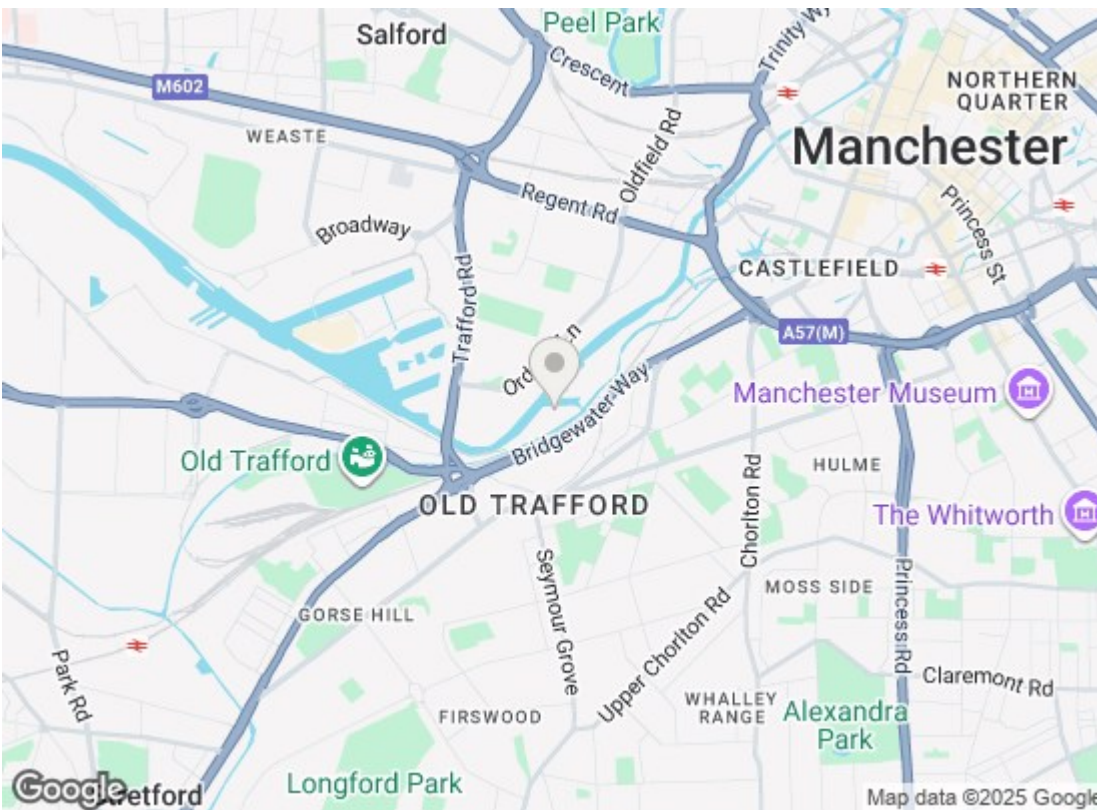
RIVERSIDE DEVELOPMENT





Total floor area 36.6 sq.m. (394 sq.ft.) approx

This floor plan is for illustrative purposes only. It is not drawn to scale. Any measurements, floor areas (including any total floor area), openings and orientation are approximate. No details are guaranteed, they cannot be relied upon for any purpose and they do not form part of any agreement. No liability is taken for any error, omission or misstatement. A party must rely upon its own inspection(s). Powered by [www.focalagent.com](http://www.focalagent.com)



Energy Efficiency Rating		
	Current	Potential
Very energy efficient - lower running costs		
(92 plus) A		
(81-91) B		
(69-80) C	80	80
(55-68) D		
(39-54) E		
(21-38) F		
(1-20) G		
Not energy efficient - higher running costs		
England & Wales		EU Directive 2002/91/EC
Environmental Impact (CO <sub>2</sub> ) Rating		
	Current	Potential
Very environmentally friendly - lower CO <sub>2</sub> emissions		
(92 plus) A		
(81-91) B		
(69-80) C		
(55-68) D		
(39-54) E		
(21-38) F		
(1-20) G		
Not environmentally friendly - higher CO <sub>2</sub> emissions		
England & Wales		EU Directive 2002/91/EC

We have prepared these property particulars as a general guide to a broad description of the property. They are not intended to constitute part of an offer or contract. We have not carried out a structural survey and the services, appliances and specific fittings have not been tested. All photographs, measurements, floorplans and distances referred to are given as a guide only and should not be relied upon for the purchase of carpets or any other fixtures or fittings. Lease details, service charges and ground rent (where applicable) and council tax are given as a guide only and should be checked and confirmed by your Solicitor prior to exchange of contracts.