



Weaver House Higham Mews, Northolt
£215,000



Weaver House, Higham Mews

Northolt

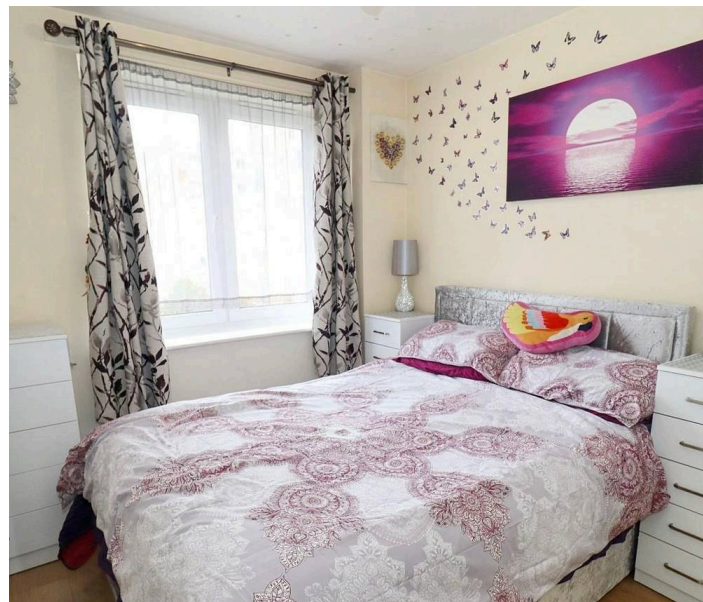
- Underground Parking Space + Free Street Parking
- Excellent Condition Throughout
- Leasehold: 104 Years Remaining
- Great Transport Links
- Close to Local Amenities
- No Ground Rent
- Service charge £293/month (sinking fund included, no extra payments, fixed until 2026)

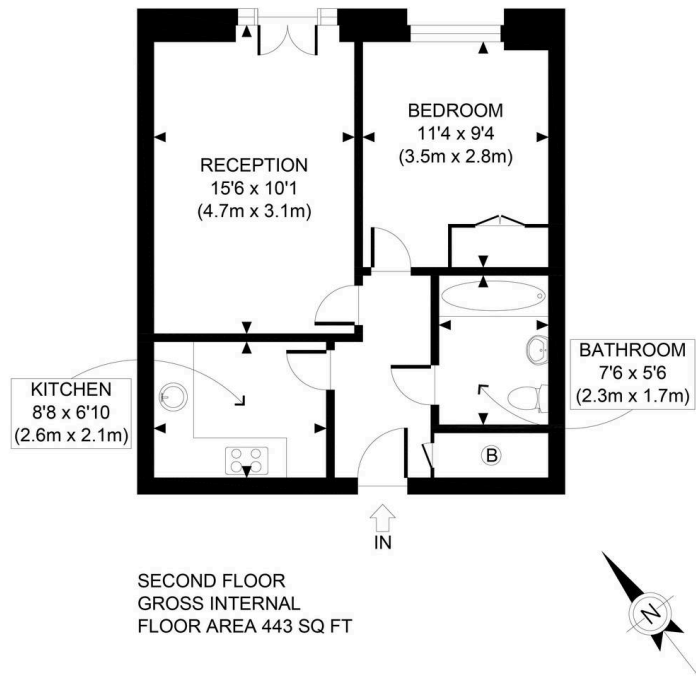
Council Tax band: C

Tenure: Leasehold

EPC Energy Efficiency Rating: B

EPC Environmental Impact Rating: B





APPROX. GROSS INTERNAL FLOOR AREA 443 SQ FT / 41 SQM

Disclaimer: Floor plan measurements are approximate and are for illustrative purposes only. While we do not doubt the floor plan accuracy and completeness, you or your advisors should conduct a careful, independent investigation of the property in respect of monetary valuation

Weaver House

date 10/10/24

photoplan 





SAB Estates

236-238 Ruislip Road, Greenford - UB6 9RS

020 8575 2929 • info@sabestates.com • www.sabestates.com/