

west  
THE PROPERTY CONSULTANCY



TO LET



Flat 3, 24 Hensington Road, Woodstock, OX20 1JL

£1,350 PCM

- Small apartment block just off central Woodstock
- Open plan living/kitchen area with Integrated appliances
- Double Bedroom & Bath / Shower room
- Allocated covered parking space
- Walk to Woodstock's excellent restaurants and to
- A very nicely appointed ground floor apartment
- Available from the mid May 26
- Gas fired central heating
- One of the best locations in the county in which to live
- Oxford c. 8 Miles, Blenheim Estate grounds a short walk away

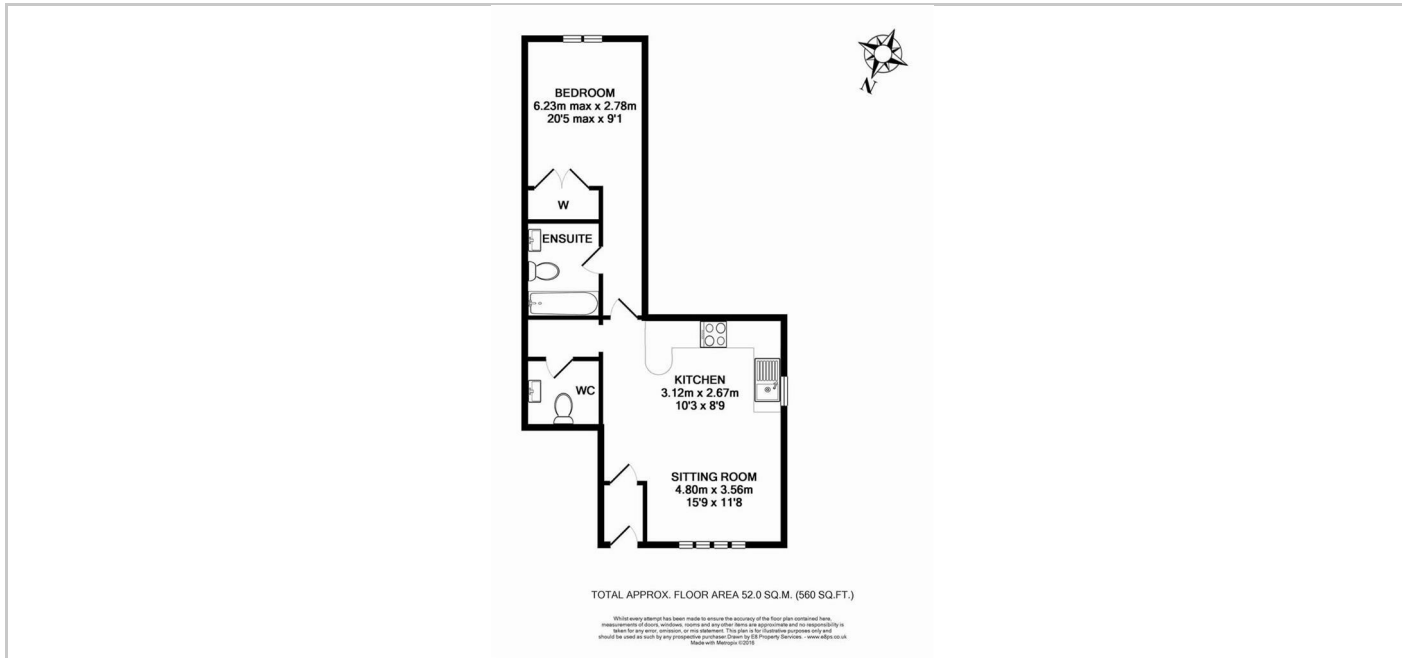
WOODSTOCK  
Oxford City Centre c. 8 miles, Long Hanborough Station c. 2.1 Miles

A beautifully detailed first floor apartment with open plan living space, in the heart of Woodstock. Finished to a high specification the apartment comprises one double bedroom, one bathroom, one covered allocated parking space, central heating, kitchen with integrated appliances. Cloaks. Covered 'off street' parking. A short walk to good restaurants, 'gastro' pubs, shops and of course access in to the UNESCO World Heritage Site, Blenheim Palace for beautiful walks / runs on your doorstep. In all a great location. (TOTAL FLOOR AREA c.560 sq ft / 52 m2)

QUOTING RENT: £1,350 pcm

## THE PROPERTY

EXCEPTIONAL CONTEMPORARY 1 BEDROOM APARTMENT - A walk away from central Woodstock.



## Directions

DIRECTIONS: From Oxford take the A44 signposted Woodstock. On entering Woodstock pass the main gates to Blenheim Palace on your left and turn right shortly c.150 metres thereafter into Hensington Road, The distinctive bay windowed relatively recently built stone building will be found on your right.

## SITUATION

Contact: [gavin@west-tpc.co.uk](mailto:gavin@west-tpc.co.uk)  
(t) 01865 510000 (e) [gavin@west-tpc.co.uk](mailto:gavin@west-tpc.co.uk)

A holding deposit of 1 weeks rent will apply and be taken when making an application to secure a tenancy through WEST-The Property Consultancy. Please contact the office for further details if required.