



## PARK ROAD

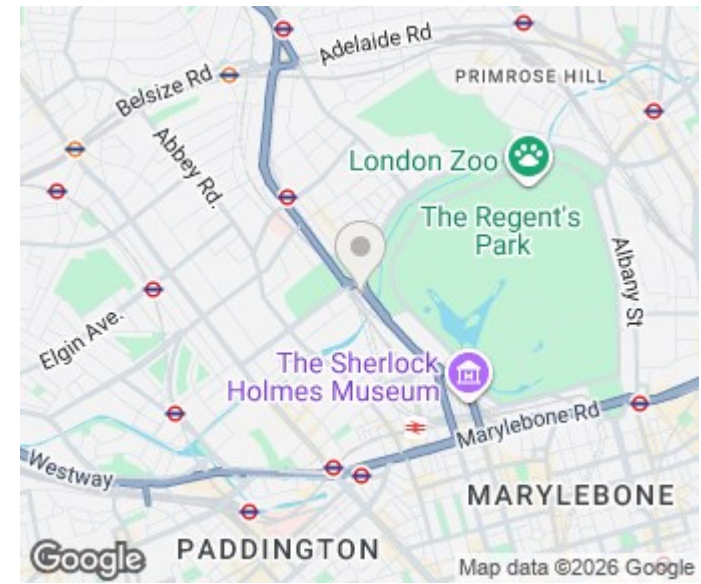
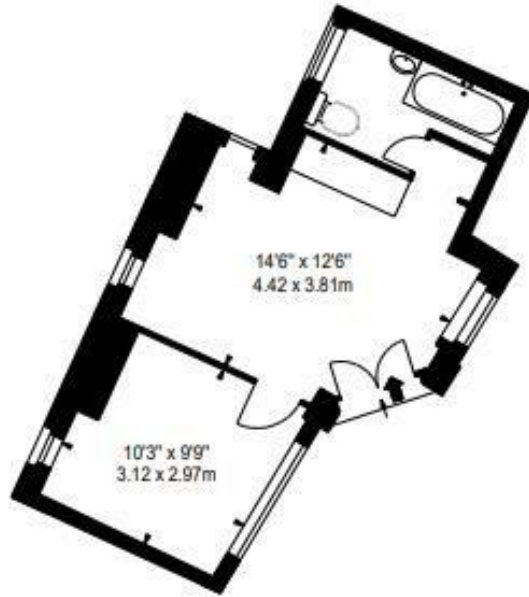
ST JOHNS WOOD, NW8


£2,600 PER MONTH

Spacious one bed flat available in the popular and well located block, Strathmore Court. The flat comprises of 1 double bedroom, spacious reception room, fully fitted kitchen and a bathroom suite.

Strathmore Court benefits from porterage and is only a 10 minute walk to either Baker Street Tube Station (Jubilee), St Johns Wood (Jubilee), surrounding cafés, bars and restaurants are also within a short walk. Available now, viewings are highly recommended.

**PMP** | INTERNATIONAL



Energy Efficiency Rating		
	Current	Potential
Very energy efficient - lower running costs		
(92 plus) <b>A</b>		
(81-91) <b>B</b>		
(69-80) <b>C</b>		
(55-68) <b>D</b>		
(39-54) <b>E</b>		
(21-38) <b>F</b>		
(1-20) <b>G</b>	<b>1</b>	<b>1</b>
Not energy efficient - higher running costs		
<b>England &amp; Wales</b>	EU Directive 2002/91/EC 	

Agents Note: Whilst every care has been taken to prepare these particulars, they are for guidance purposes only. All measurements are approximate and are for general guidance purposes only and whilst every care has been taken to ensure their accuracy, they should not be relied upon and potential buyers/tenants are advised to recheck the measurements

London  
PMP International  
94 Belsize Lane  
Belsize Park  
London  
NW3 5BE

020 7701 2878  
info@pmpi.co.uk  
www.pmpi.co.uk

**PMP** | INTERNATIONAL