



Luscombe Maye

Since 1873

**3 River View Place,**  
Guide Price £230,000

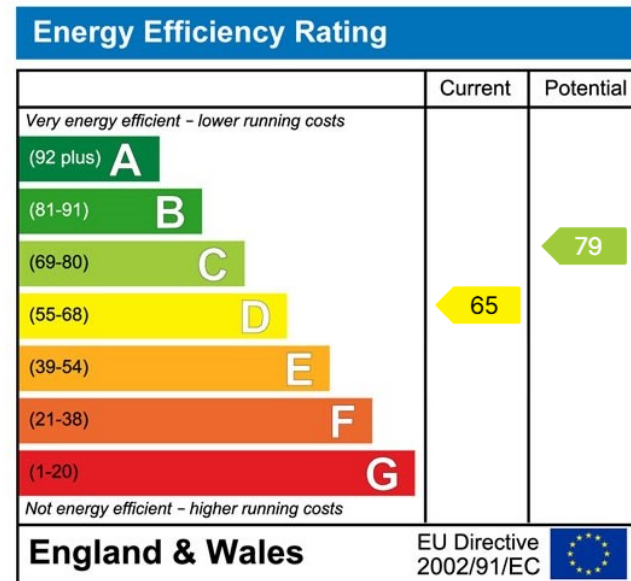
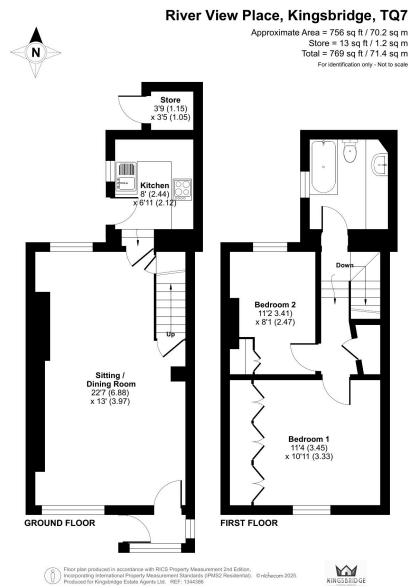
🛏 2 🚿 1 🚗 1



- Terraced House
- Two Bedrooms
- Central Location
- Quiet Lane off Fore Street
- Open plan living area
- Peaceful Garden
- Scope for Modernisation
- EPC B



Terraced House | Open plan living area | Two bedrooms |  
 Peaceful Garden | Central Location | Scope for Modernisation |  
 Quiet Lane off Fore Street



Important Notice: Luscombe Maye gives notice that: 1. These particulars do not constitute an offer or contract or part thereof. 2. All descriptions, photographs and plans are for guidance only and should not be relied upon as statements or representations of fact. All measurements are approximate and not necessarily to scale. Any prospective purchaser must satisfy themselves of the correctness of the information within the particulars by inspection or otherwise. 3. Luscombe Maye does not have any authority to give any representations or warranties whatsoever in relation to this property (including but not limited to planning/building regulations), nor can it enter into any contract on behalf of the Vendor.



**Kingsbridge:**  
 62 Fore Street, Kingsbridge TQ7 1PP  
 01548 857474  
 kingsbridge@luscombemaye.com  
[www.luscombemaye.com](http://www.luscombemaye.com)