



Lawn Terrace, SE3

£950,000

Dexters



Lawn Terrace, SE3

Situated on the doorstep of Blackheath Village and within easy reach of the station, this exceptional five-bedroom townhouse offers over three floors of beautifully presented accommodation and has been recently updated throughout to an excellent standard.

The ground floor comprises a spacious garage, which offers excellent storage and potential for conversion (STPP), a generous double bedroom overlooking the rear garden, a modern shower room and spacious entrance hall. The first floor is the heart of the home, featuring an impressive reception and dining room extending the full depth of the property, with views over the south facing garden. To the front is a well-appointed kitchen with views overlooking the road. The top floor offers four further bedrooms, including two generous double bedrooms and two well-proportioned single bedrooms, all served by a contemporary family bathroom. Externally, the property benefits from off-street parking to the front and a beautifully maintained private rear garden, providing an ideal space for outdoor dining and relaxation.

Nestled in the heart of Blackheath, within minutes of Blackheath Village for its shops, restaurants and station, and for Greenwich Park. Within catchment area of All Saints primary school and within walking distance of other sought after private and state schools.

Features

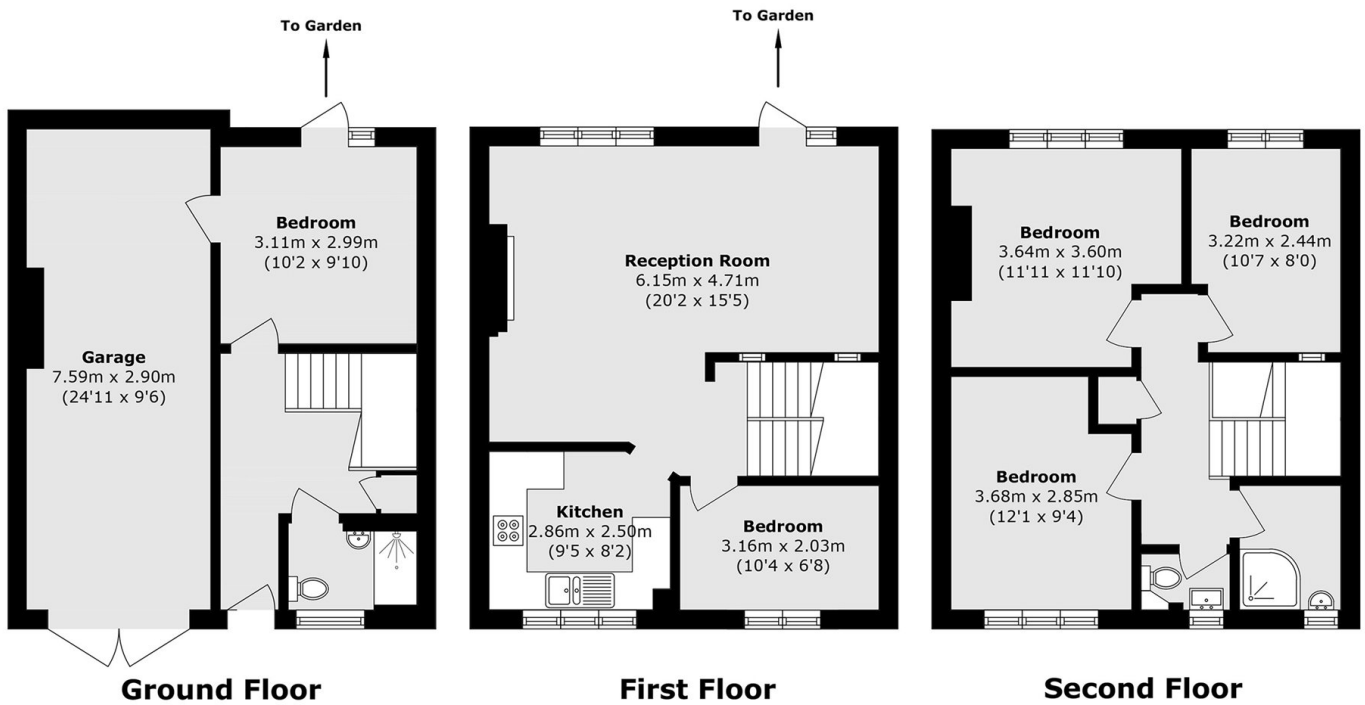
- Five Bedrooms
- Off Street Parking
- In The Heart Of Blackheath Village
- Two Bathrooms
- Garage







Lawn Terrace, London, SE3



Total area (approx.): 135.6 sq. m (1459.5 sq. ft)
(Including Garage)