



## Room 4

Cecil Street | | Watford | WD24 5AS

£795 Per Month



**LEAFY  
ESTATES**

## Key features

- Furnished High Standard
- Spacious Double Ensuite Room To Rent - Watford WD24 - Cecil Street
- Approximately 12–15 minutes walk to Watford Junction Station

## Description

A modern and spacious en suite room is available in Watford WD24, ideal for working professionals seeking comfortable, well-managed accommodation in a central and well-connected location.

Located on Cecil Street, the property offers easy access to Watford town centre, transport links, supermarkets, and local amenities.

### THE ROOM

- Large ensuite double room
- Furnished at a high standard
- Wardrobe and storage space
- Large shared kitchen plus a second smaller kitchen
- Super-speed broadband (400 Mbps)
- Constant hot water and central heating

### ALL BILLS INCLUDED

- Council Tax
- Electricity
- Gas
- Water
- Broadband

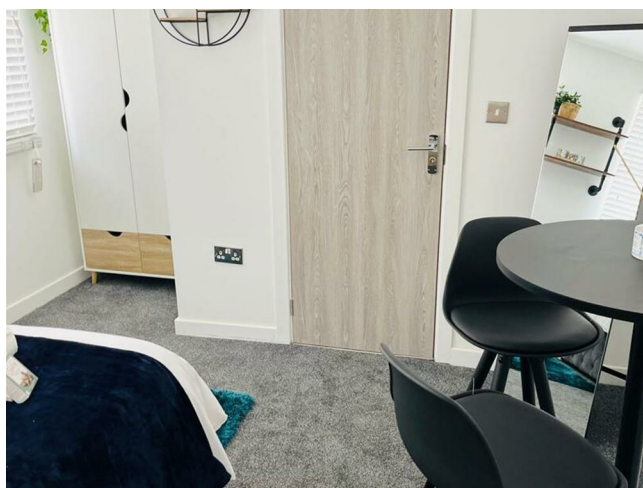
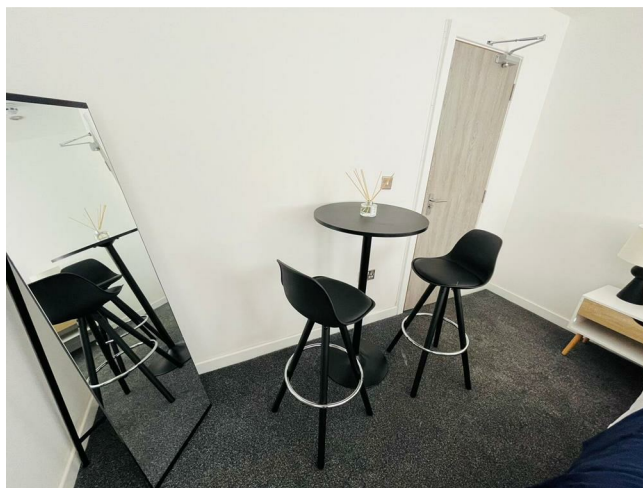
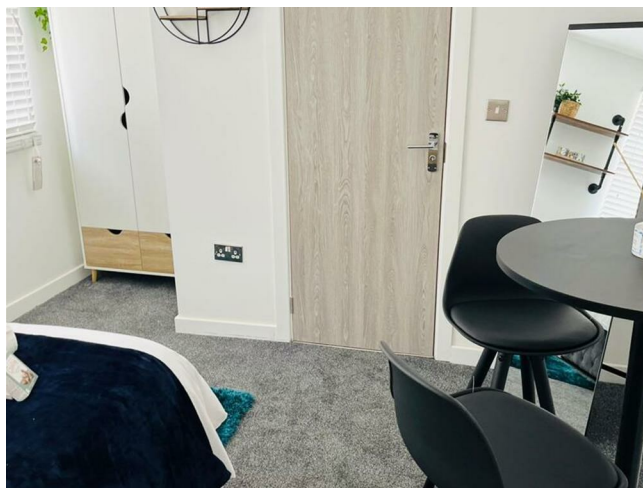
### LOCATION

- Approximately 18–20 minutes walk to Langley House Community Hospital
- Approximately 12–15 minutes walk to Watford Junction Station
- Around 5 minutes walk to local shops
- Around 10 minutes walk to supermarkets
- Excellent transport links into London and surrounding areas

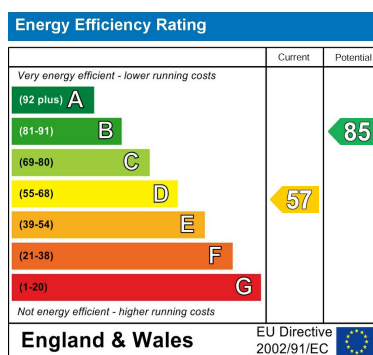
### THE PROPERTY

- Professional mixed-gender household
- Quiet and well-maintained environment

## Directions







Council Tax Band D    EPC Rating D



68 South Hill Avenue  
Harrow  
HA2 0NH  
02081501988  
info@leafyestates.co.uk  
leafyestates.co.uk