



**John Street, WC1N**  
**£1,750,000**

**Dexters**



## John Street, WC1N

A beautifully presented three bedroom home in a converted 1930's Art Deco building. The property includes three bathrooms, a utility room and an open-plan kitchen/reception with private balcony.

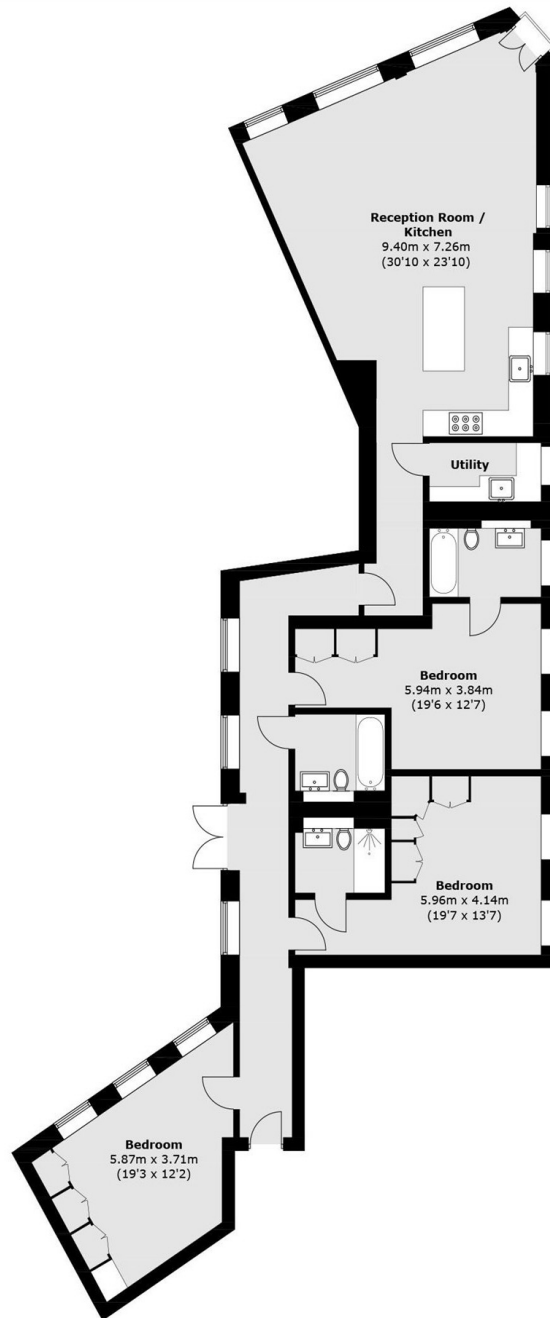
John Street is arguably Bloomsbury's finest location, the tree lined street gives great access to a number of transport links as well as being within walking distance to London's West End.

### Features

- Three Double Bedrooms
- Circa 1600 Sq Ft
- Three Bathrooms
- Juliette Balcony
- Excellent Location
- No Onward Chain



# John Street, London, WC1N



## Second Floor

Total area (approx.): 147.5 sq. m (1587.7 sq. ft)