



Lady Margaret Road, N19

£625,000

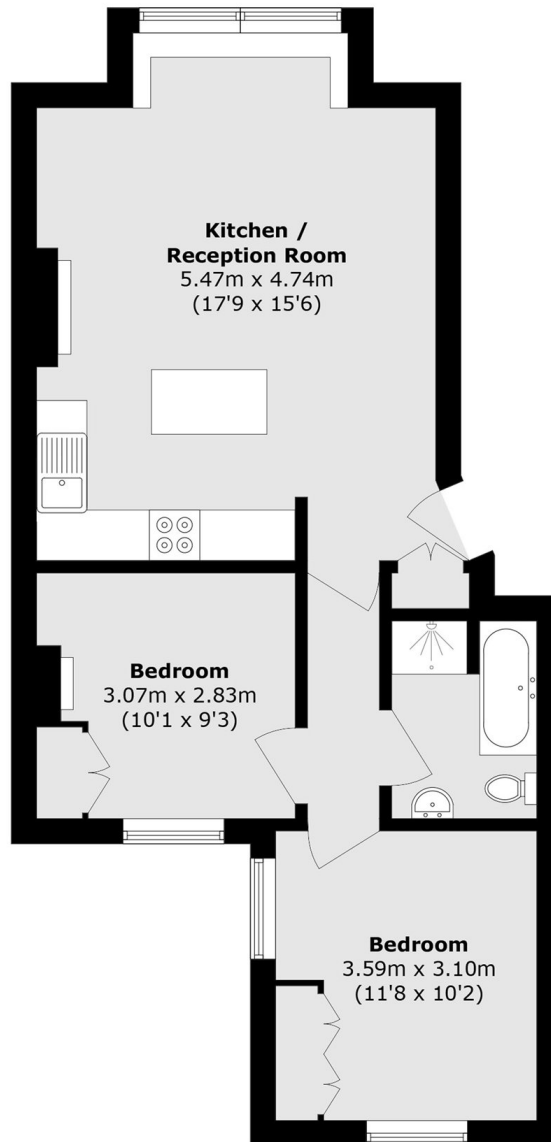
A well-presented two double bedroom Victorian conversion on a tree-lined residential road. This apartment has a spacious open plan reception room/ kitchen with large windows and ample storage throughout.

Lady Margaret Road is moments from Tufnell Park station (Northern line), the great range of independent shops, cafés and restaurants on Fortess Road and is also within easy reach of the green open spaces of Hampstead Heath.

Features

- Share of Freehold
- Two Double Bedrooms
- Period Conversion
- Great Transport Links
- Wooden Floors
- Period Features

Lady Margaret Road, London, N19



Total area (approx.): 56.7 sq. m (610.3 sq. ft)