



Blandford Alley, Highworth, SN6 7BQ

£395,000
(Subject to Contract)

Hanley's

Blandford Alley Highworth SN6 7BQ

A beautifully presented Grade II listed detached thatched cottage in the heart of Highworth just off the High Street. The property includes the addition of a single garage to the side with power, light and an electric roller door. The spacious accommodation comprises: dual aspect living/dining room with exposed painted beams and attractive staircase to the first floor, re-fitted kitchen with door to the garden, re-fitted ground floor bathroom with bath and shower over and utility area/hallway. To the first floor is a landing with access to the boarded loft space via a drop down ladder, two good sized bedrooms; both with fitted wardrobes and a separate W.C.. The property further benefits from gas radiator central heating and double glazing. Outside to the rear is an established walled garden with patio area, raised vegetable patch, attractive working well, area laid to lawn with mature flower and shrub borders and well stocked flower beds.



1 Bathroom



2 Bedrooms



1 Reception

EPC: N/A

Council Tax Band: D

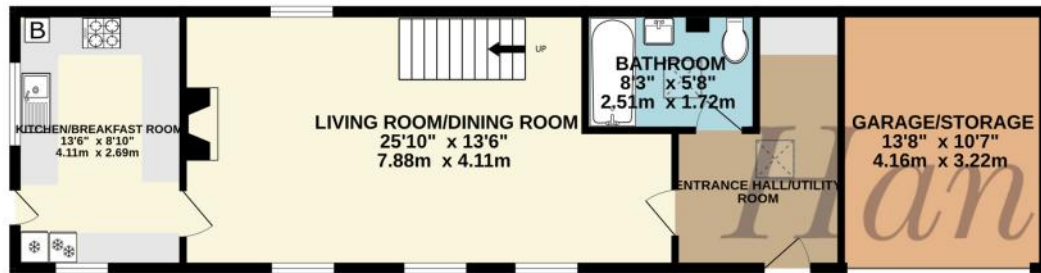
Tenure: Freehold



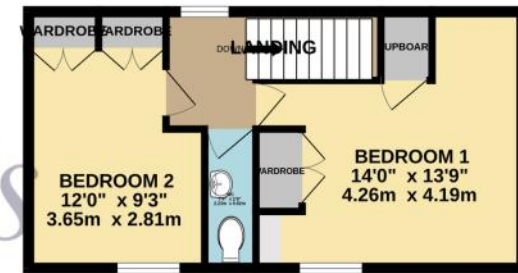
DISCLAIMER. These particulars, whilst believed to be accurate are set out as a general outline for guidance and do not constitute any part of an offer or contract. Intending purchasers should not rely on them as statements or representation of fact, but must satisfy themselves by inspection or otherwise as to their accuracy. No person in this firm's employment has the authority to make or give any representation or warranty in respect of the property. Floor plan measurements and distances are approximate only. We have not carried out a detailed survey nor tested the services, appliances or specific fittings. Your home is at risk if you do not keep up repayments on a mortgage or other loan secured on it.



GROUND FLOOR
722 sq.ft. (67.1 sq.m.) approx.



1ST FLOOR
349 sq.ft. (32.5 sq.m.) approx.



TOTAL FLOOR AREA : 1072 sq.ft. (99,6 sq.m.) approx.

Whilst every attempt has been made to ensure the accuracy of the floorplan contained here, measurements of doors, windows, rooms and any other items are approximate and no responsibility is taken for any error, omission or mis-statement. This plan is for illustrative purposes only and should be used as such by any prospective purchaser. The services, systems and appliances shown have not been tested and no guarantee as to their operability or efficiency can be given.
Made with Metropix ©2026



Hanley's Estate Agents
25 High Street, Highworth, SN6 7AG
Tel: 01793 762005 mail@hanleys.co.uk

