



Garages at Gladstone Road, Ashted, KT21 2NS

Price Guide £250,000

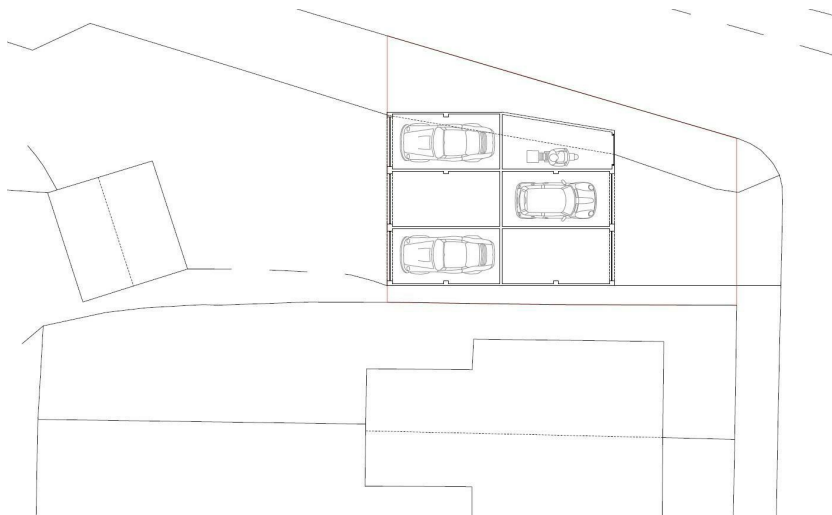
- GARAGE BLOCK INVESTMENT OPPORTUNITY
- 6 LOCK UP GARAGES FOR CARS/MOTORBIKES/STORAGE
- FULLY LET AT ANNUAL EQUIVALENT OF £11,741
- LONGER TERM DEVELOPMENT POTENTIAL

These 6 garages (one of which is narrower than the others and more suitable for motorbikes/storage etc) are set on the corner of Gladstone Road and Skinners Lane being accessed from both Gladstone Road and The Byways; Three of the garages (including the narrower one) are accessed from Gladstone Road whilst the remaining three garages are accessed from The Byways.

The garages are ideal for those looking for lock up storage or secure garaging for a car/motorcycle.

All let on individual licences, this investment opportunity provides for an annual equivalent income of £11,741.

Held under two titles, SY410708 and SY661914, in the longer term, a purchase could provide an opportunity (subject to planning approval being granted) for the development of a single unit.



Tenure

Freehold

1-3 Church Street, Leatherhead, Surrey, KT22 8DN
Tel: 01372 360078 **Email:** leatherhead@patrickgardner.com
www.patrickgardner.com

These particulars, whilst believed to be accurate are set out as a general outline only for guidance and do not constitute any part of an offer or contract. Intending purchasers should not rely on them as statements of representation of fact, but must satisfy themselves by inspection or otherwise as to their accuracy. No person in this firm's employment has the authority to make or give any representation or warranty in respect of the property.

