



Flat 1 33 St Stephens Road, Cheltenham GL51 3AB

Flat 1 33 St Stephens Road, Cheltenham GL51 3AB



A spacious and beautifully renovated one-bedroom lower ground floor apartment set within a handsome detached villa, ideally located between Tivoli and The Park.



This stylish property offers a generous sitting room with a splay bay window opening to a modern, refitted kitchen. The entrance hall provides useful space for a home working area and leads to a sleek, fully tiled shower room with a large walk-in shower. The double bedroom is well-proportioned and benefits from built-in wardrobes.

Further advantages include off-street parking (one space per flat) and access to communal grounds to the front and rear.

ACCOMMODATION

Entrance hall
Sitting/dining room
Kitchen
Modern shower room
Double bedroom

PARKING

Off street car parking

ADDITIONAL

Gas fired central heating to radiators
Unfurnished

INCLUDED

Oven & hob
Refrigerator
Freezer
Washing machine

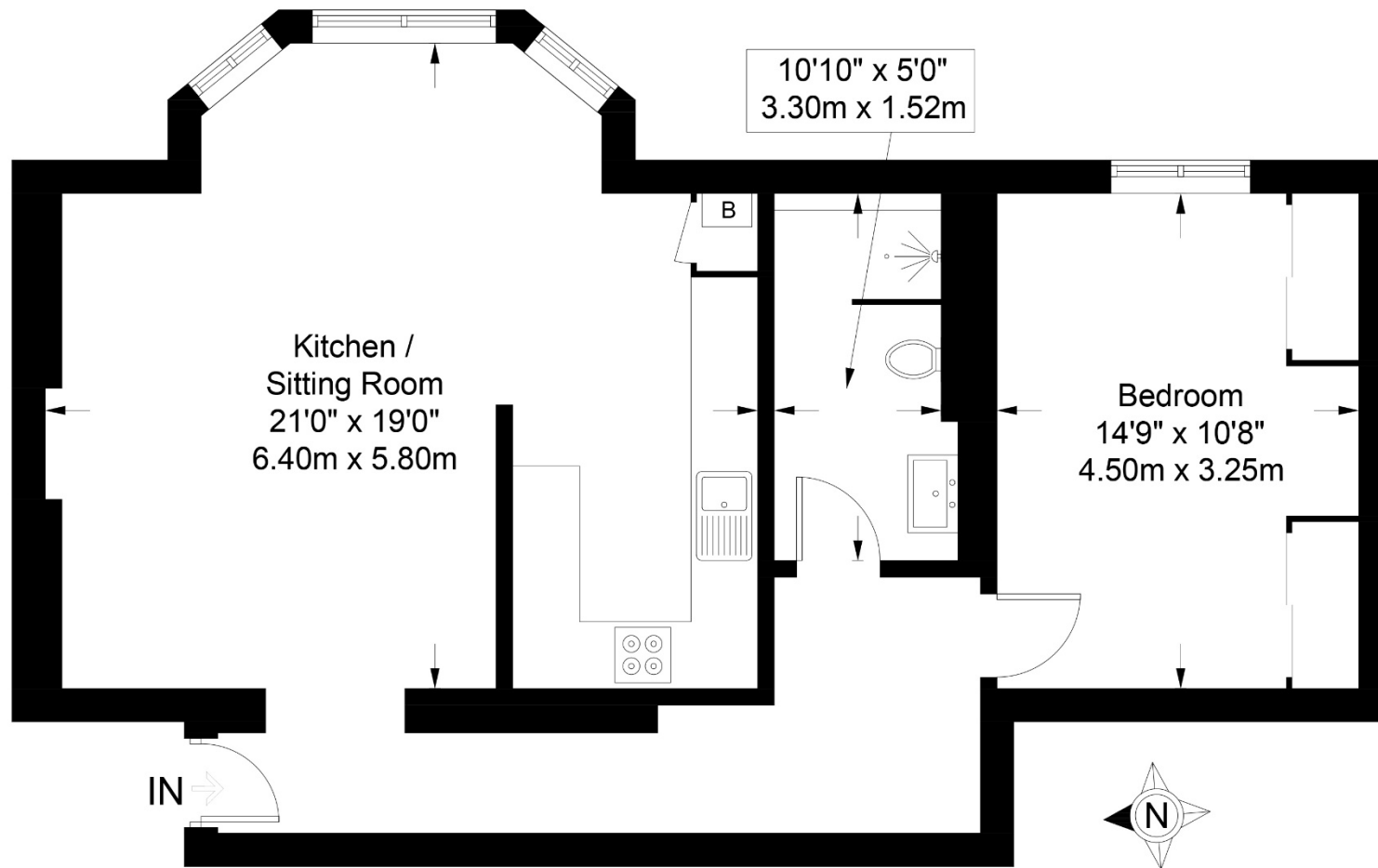
GENERAL:

Services: All mains services are believed to be connected.
Local Authority: Cheltenham Borough Council.
Council Tax: TBC
EPC: D (62/77)
Note: No pets.

VIEWING AND SHOWING TIMES:

Read Maurice show our rental property during weekdays only. No application may be made without a physical viewing of the property. For certain properties block viewings will be offered and you are advised to attend at the earliest opportunity if this property is of interest to you.





1 Flat 33 St Stephens Road, Cheltenham GL51 3AB
 Approximate Gross Internal Area 709 sq ft / 65.9 sq m

These particulars, whilst believed to be accurate are set out as a general outline only for guidance and do not constitute any part of an offer or contract. Intending purchasers should not rely on them as statements or representation of fact, but must satisfy themselves by inspection or otherwise as to their accuracy. We have not carried out a detailed survey nor tested the services, appliances and specific fittings. Room sizes should not be relied upon for carpets and furnishings. The measurements given are approximate. No person in this firm's employment has the authority to make or give any representation or warranty in respect of the property. Purchasers should not rely on room labels as they are chosen by the floor planner and may not have the deemed planning consent for such use.

readmaurice 

48 Andover Road, Cheltenham GL50 2TL
 Tel: 01242 241122
 Email: post@readmaurice.co.uk
www.readmaurice.co.uk