



Park Lane Plaza, 2 Jamaica Street, Liverpool, Merseyside L1 0AF

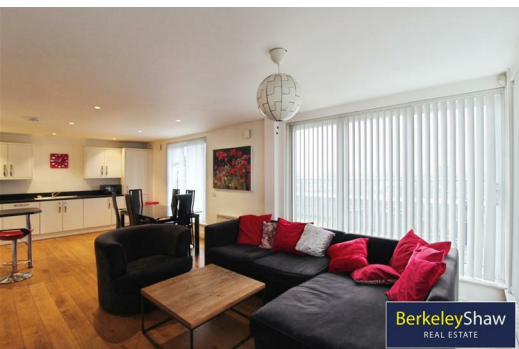
£1,400 PCM

Welcome to this delightful two-bedroom apartment located in the vibrant Park Lane Plaza on Jamaica Street, Liverpool. This modern property offers a perfect blend of comfort and convenience, making it an ideal choice for both professionals and families alike.

Upon entering, you will find a spacious reception room alongside two well-appointed bedrooms, each designed to offer a peaceful retreat after a busy day in the city. With two bathrooms, including an en-suite, morning routines will be a breeze, ensuring privacy and ease for all residents.

One of the standout features of this property is the private patio, which offers a lovely outdoor space to enjoy fresh air and sunshine. Additionally, the apartment comes with parking. Situated in the heart of Liverpool, this apartment provides easy access to and from the City Centre.

Deposit: £1,400.00
Council Tax: Band C
Minimum Term: 12months



Hallway

Open Plan Lounge Kitchen

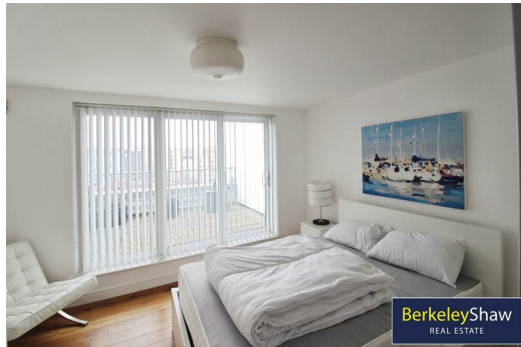
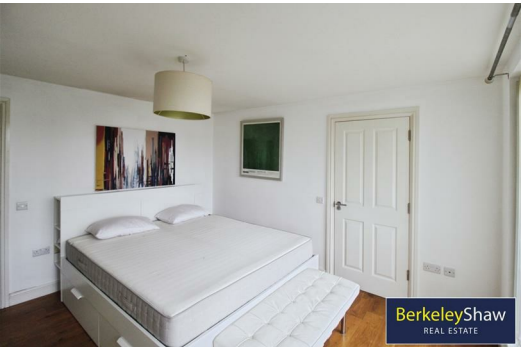
Bedroom 1

Bathroom

Bedroom 2

Energy Efficiency Rating		
	Current	Potential
Very energy efficient - lower running costs		
(92 plus) A		
(81-91) B		
(69-80) C		
(55-68) D		
(39-54) E		
(21-38) F		
(1-20) G		
Not energy efficient - higher running costs		
England & Wales	69	78
EU Directive 2002/91/EC		

Environmental Impact (CO ₂) Rating		
	Current	Potential
Very environmentally friendly - lower CO2 emissions		
(92 plus) A		
(81-91) B		
(69-80) C		
(55-68) D		
(39-54) E		
(21-38) F		
(1-20) G		
Not environmentally friendly - higher CO2 emissions		
England & Wales	64	64
EU Directive 2002/91/EC		



Berkeley Shaw Estate Agents Limited.
Company No. 0784754

Berkeley Shaw Real Estate Limited.
Company No. 05206927

