



Halfway Street

Sidcup
DA15 8DA

Freehold

3 bedroom semi detached chalet style house
Potential to extend (STPP)
Chain Free
Easy access to Sidcup station, local shops and popular schools
Off street parking and garage
Ideal family home
2 reception rooms





FULL DESCRIPTION

Offered for sale is this popular 3 bedroom semi detached chalet house that sits in a popular location that offers easy access to Sidcup train station, local shops and some popular schools. This style of house offers fantastic potential to be extended into a 5 bedroom house as many in the area have done (STPP)) and we feel it would make a great family home.

The house briefly comprises of: Entrance hall, front lounge, dining room, kitchen with access to the garden, shower room and bedroom 3. The first floor has 2 good sized bedrooms and eaves and loft storage.

Externally there are front and rear gardens, off street parking and garage. *chain free*



Directions

From our Sidcup office turn right. At the traffic lights proceed straight across into Halfway Street. Closest Stations: Sidcup (0.63 mi) New Eltham (0.85 mi) Albany Park (1.51 mi) Closest Schools: Burnt Oak Junior School (0.42 mi) Dulverton Primary School (0.49 mi) Chislehurst and Sidcup Grammar School (0.74 mi)



Local Authority
Council Tax Band
EPC Rating

Bexley London Borough Council

E
E

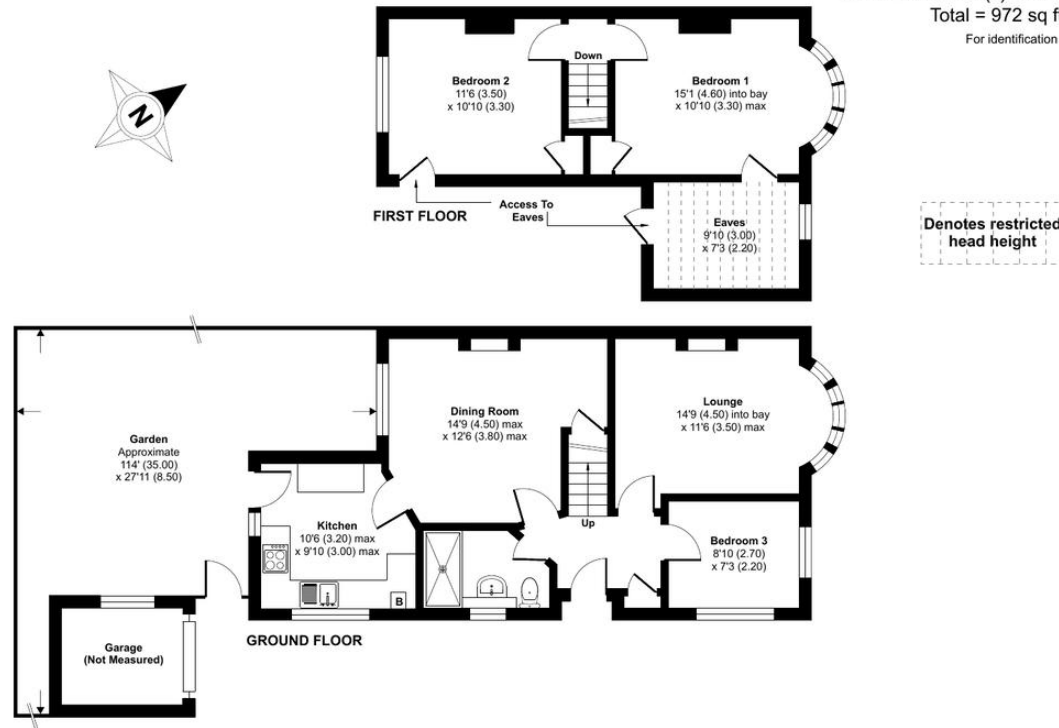
Halfway Street, Sidcup, DA15

Approximate Area = 896 sq ft / 83.2 sq m

Limited Use Area(s) = 76 sq ft / 7 sq m

Total = 972 sq ft / 90.3 sq m

For identification only - Not to scale



Floor plan produced in accordance with RICS Property Measurement 2nd Edition, Incorporating International Property Measurement Standards (IPMS2 Residential). © nchecom 2025. Produced for Drewery. REF: 1350904



Drewery Property Consultants
128 Station Road
Sidcup
Kent
DA15 7AF

Contact
020 8269 6605
info@drewery.co.uk
www.drewery.co.uk

Agents Note: Whilst every care has been taken to prepare these particulars, they are for guidance purposes only. All measurements are approximate and are for general guidance purposes only and whilst every care has been taken to ensure their accuracy, they should not be relied upon and potential buyers/tenants are advised to recheck the measurements.