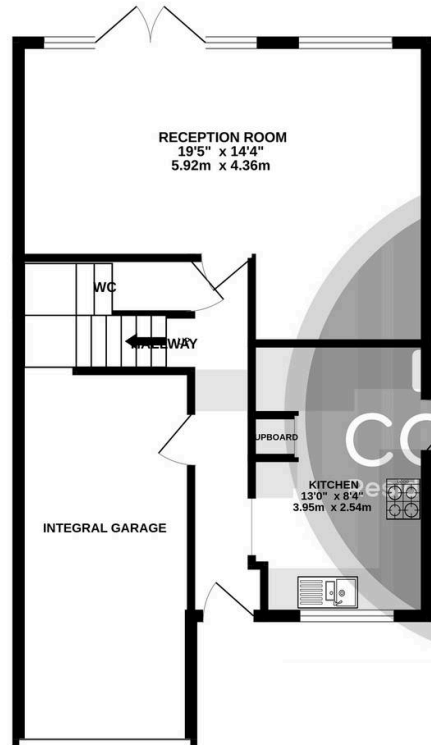
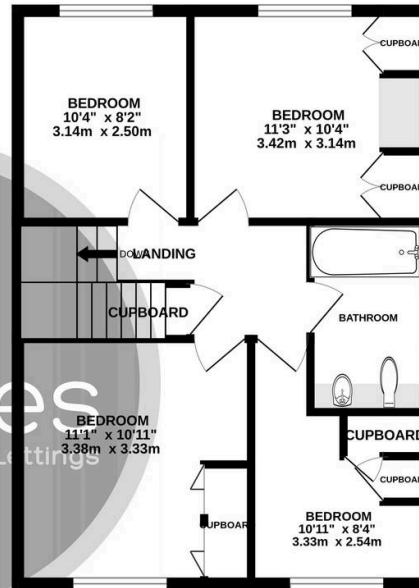




GROUND FLOOR
578 sq.ft. (53.7 sq.m.) approx.



1ST FLOOR
530 sq.ft. (49.2 sq.m.) approx.



TOTAL FLOOR AREA : 1107 sq.ft. (102.9 sq.m.) approx.

Whilst every attempt has been made to ensure the accuracy of the floorplan contained here, measurements of doors, windows, rooms and any other items are approximate and no responsibility is taken for any error, omission or mis-statement. This plan is for illustrative purposes only and should be used as such by any prospective purchaser. The services, systems and appliances shown have not been tested and no guarantee as to their operability or efficiency can be given.
Made with Metropix ©2026

Brittens Close

Guildford, Guildford

Beautiful four-bedroom semi-detached home with modern kitchen, bright reception, stylish bathroom, study, and lush garden. Ideal for families or professionals seeking comfort and style.

Council Tax band: D

Tenure: Freehold

- Four Bedroom House
- Chain Free
- Driveway
- Private Garden
- Garage
- Neutral decor
- End Of Terrace

