



The Orchards, Kingswood, BS15 9UF
03334041188 option 3

Asking Price £310,000
guy.rolfe@moving-you.co.uk

Freehold
www.moving-you.co.uk









The Orchards, Kingswood, Bristol, BS15 9UF

This beautiful three bedroom mid terrace family home, set within a quiet cul-de sac location and ideal for first time buyers and families. Located within a pleasant residential area of Kingswood, the home sits close to nearby schools such as Courtney Primary, making school runs straightforward and convenient.

Inside this lovely home, the property offers a living room featuring an inset wood burner, creating a cosy focal point and a comfortable space to relax. Open plan to the rear, the dining room enjoys a garden view and direct access to the garden via the bi fold glass doors, providing an attractive setting for dining or family time. The modern style fitted kitchen includes hot water tap and breakfast area, offering a practical spot for everyday meals with some integral appliances.

Upstairs, there is a master bedroom overlooking the front, a further double bedroom, and a single bedroom, giving flexible options for children, guests or a home office. The practical bathroom features a modern refitted suite and rain forest style shower. A useful loft room provides additional versatile space, while a single garage offers secure parking or storage.

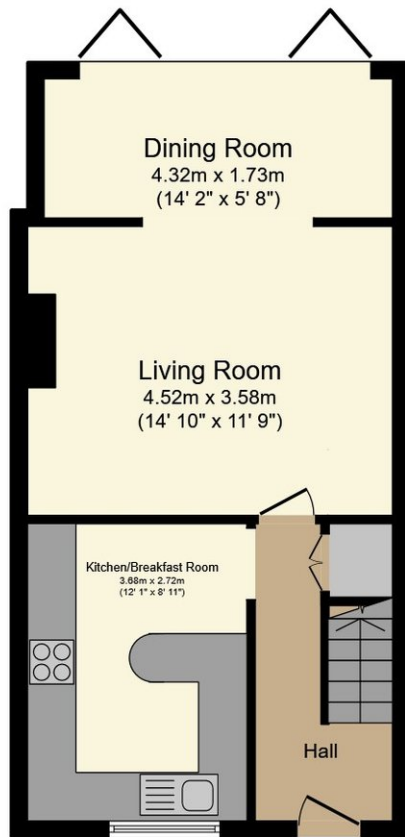
Locally, residents can enjoy Bristol's many green spaces and parkland, along with a wide choice of shops, supermarkets and cafés on the surrounding high streets. The area is well connected to central Bristol by road, with bus routes providing access into the city centre for shopping, work and leisure. From there, Bristol Temple Meads station offers rail connections to Bath, Cardiff and London, with journey times to London Paddington typically around 1 hour 40 minutes.

Council Tax Band B

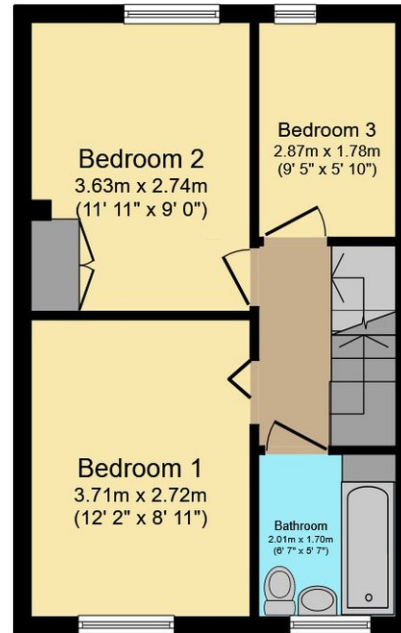




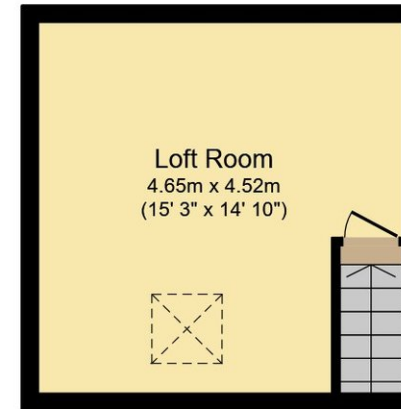




Ground Floor



First Floor



Second Floor

This floor plan is for illustrative purposes only. It is not drawn to scale. Any measurements, floor areas (including any total floor area), openings and orientations are approximate. No details are guaranteed, they cannot be relied upon for any purpose and do not form any part of any agreement. No liability is taken for any error, omission or misstatement. A party must rely upon its own inspection(s). Powered by www.Propertybox.io



Guy Rolfe Moving You

03334041188 option 3

guy.rolfe@moving-you.co.uk

PROPERTY MISDESCRIPTIONS ACT 1991: The Agents has not tested any apparatus, equipment, fixtures and fittings, or services, so cannot verify that they are in working order or fit for the purpose. The buyer is advised to obtain verification from his or her Professional Buyer, References to the Tenure of the property are based on information supplied by the Vendor. The agents have not had sight of the title documents. The buyer is advised to obtain verification from their Solicitor. You are advised to check the availability of any property before travelling any distance to view.

www.moving-you.co.uk