



Robertson Road, E16

£450,000

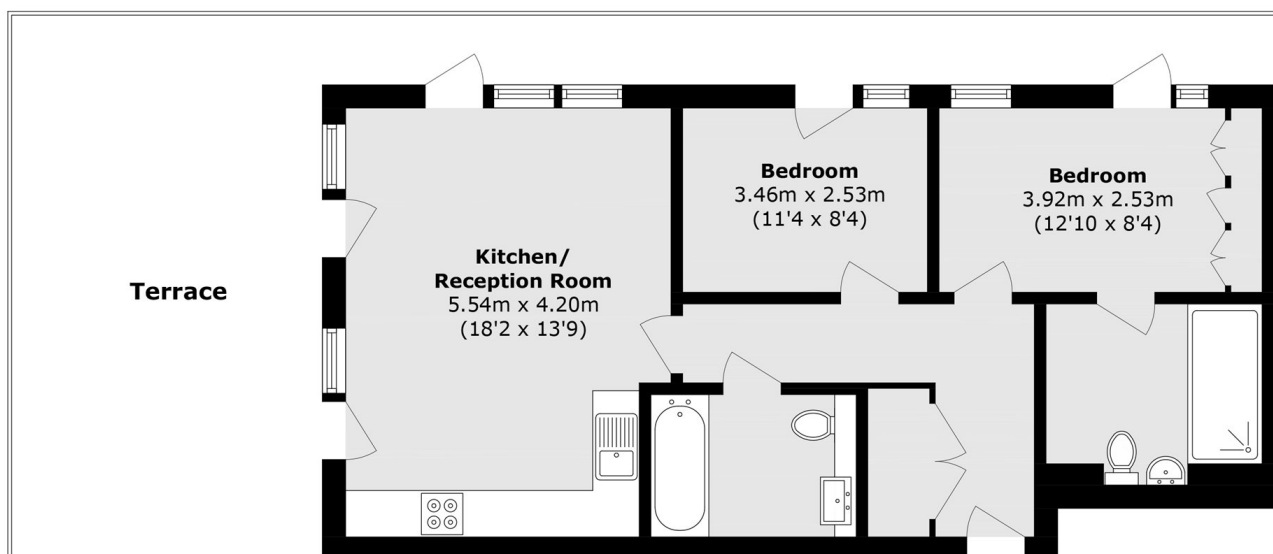
Located on the seventh floor, this well-presented penthouse offers two double bedrooms and two bathrooms, including an en-suite. The property features floor-to-ceiling windows and doors leading to an exceptionally large wrap-around terrace that surrounds the entire penthouse, benefiting from a south-west facing aspect with excellent natural light and open views towards the Docklands and the City. The home is warm, well insulated, and designed for modern living, with a sleek open-plan reception room and kitchen.

Pandora Court is located within a quarter of a mile of Canning Town Underground Station (Jubilee Line and DLR) and Custom House Station (DLR and Elizabeth Line), providing direct links to North Greenwich Underground Station and The O2 Arena.

Features

- Private Terrace
- Good Condition
- Two Double Bedrooms
- Two Bathrooms
- Near Tube Station
- Private Parking

Robertson Road, London, E16



Total area (approx.): 63.5 sq. m (683.5 sq. ft)
Terrace area (approx.): 39.1 sq. m (420.8 sq. ft)