



## PARK VIEW, SW19

£11,000 per month

Four/five bedrooms  
Three bathrooms  
Cinema room  
Landscaped garden  
Garage  
Energy rating: b

@marshandparsons  
marshandparsons.co.uk

MARSH &  
PARSONS

# ABOUT THE PROPERTY

A four/five bedroom home offering an open plan kitchen/dining room, living area, three reception rooms and cinema room downstairs. Upstairs there are four double bedrooms arranged over two floors, two en-suites and a family bathroom. A private garden, garage and parking. Finished to a high standard, the property also comes with a custom Italian kitchen with stone worktops and Miele integrated appliances, air-conditioning to all principal rooms, underfloor heating throughout and a high level security system.

Located opposite Wimbledon Common.

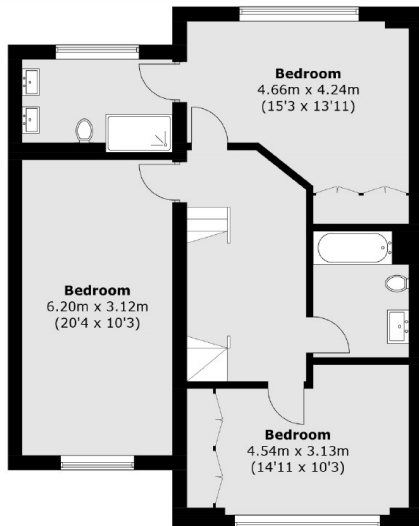




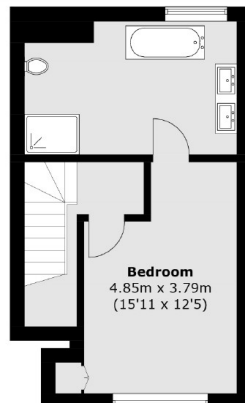




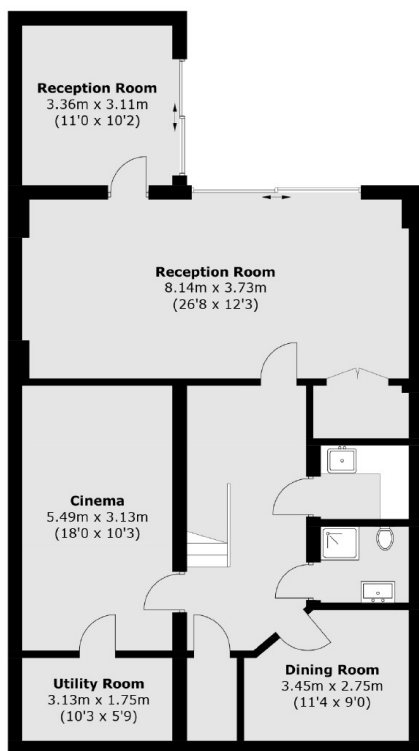
# STEP INSIDE PARK VIEW



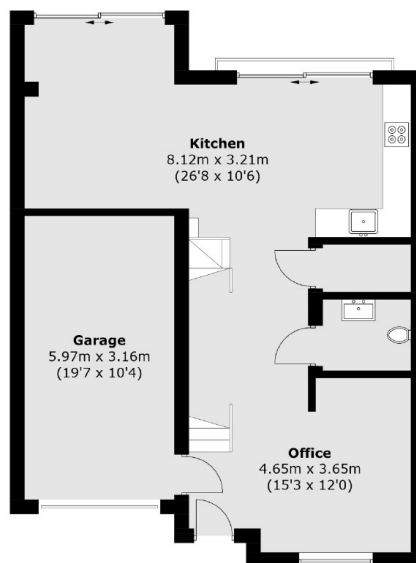
**First Floor**



**Second Floor**



**Lower Ground Floor**



**Ground Floor**

Total area (approx.): 294.1 sq. m (3,165.7 sq. ft)  
(Including Garage)

**Wimbledon**  
020 8879 6661

Energy Rating: B We aim to make our particulars both accurate and reliable. However, they are not guaranteed; nor do they form part of an offer or contract. If you require clarification on any points then please contact us, especially if you're traveling some distance to view. Please note that appliances and heating systems have not been tested and therefore no warranties can be given as to their good working order

**MARSH &  
PARSONS**