

# Franklyn James



## Plimsoll Close

, London, E14 6EJ

Guide Price £285,000

CHAIN FREE – Stunning One-Bedroom Apartment with Private Patio Garden. Minutes from Canary Wharf

Offered in superb condition, this bright and spacious one bedroom apartment is ideally located just moments from the vibrant Canary Wharf. Perfect for first time buyers or investors, the property features a private patio garden.

The accommodation comprises a secure entrance with entry phone system, welcoming hallway, a generous reception room, a modern kitchen fitted with integrated appliances, a large double bedroom, and a bathroom with a three piece suite.

Call now to arrange a viewing.

Viewing

Please contact our Limehouse Sales Office on 02077911777 if you wish to arrange a viewing appointment for this property or require further information.

- Chain free
- Private patio garden
- Moments from Canary Wharf and excellent transport links
- Combi boiler
- Double glazing throughout



1



1

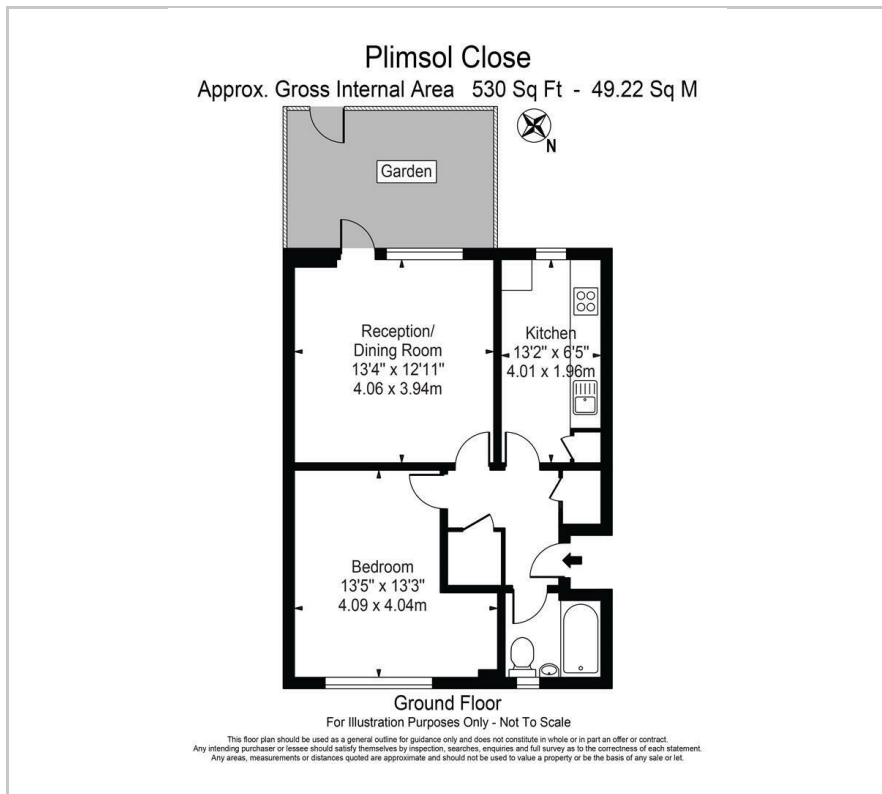


1



C

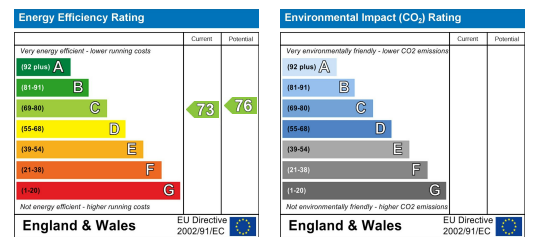
# Floor Plan



# Area Map



# Energy Efficiency Graph



These particulars, whilst believed to be accurate are set out as a general outline only for guidance and do not constitute any part of an offer or contract. Intending purchasers should not rely on them as statements of representation of fact, but must satisfy themselves by inspection or otherwise as to their accuracy. No person in this firm's employment has the authority to make or give any representation or warranty in respect of the property.