



Castletown Road, W14

£1,250 Per calendar month

This large studio apartment is based in a period conversion on a quiet residential road in West Kensington. The property has wooden floor throughout, an open plan kitchen and modern bathroom. Water rates are included in the rent.

Castletown Road is a highly sought after location that is close to Barons Court and West Kensington underground stations, local shops, the A4 and bus services on North End Road.

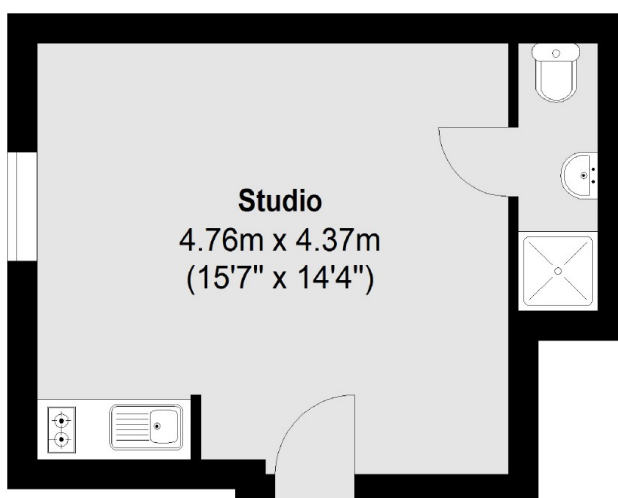
Features

- Studio Apartment
- Excellent Transport
- Modern Finish
- Wooden Flooring
- Water Rates Included
- Close To Amenities

Castletown Road,
London, W14

Castletown Road, W14

Raised Ground Floor



Total Area (approx.): 22.7 sq. m (244.3 sq. ft)

Not to scale, for guidance only and must not be relied upon as a statement of fact.
All measurements and areas are approximate only