



80 New Street
, Matlock, DE4 3FH

Guide Price £550,000

 4  3  3  D

80 New Street

, Matlock, DE4 3FH

£550,000 - £560,000 (Guide price)
Situated in the heart of Matlock whilst enjoying simply beautiful views towards Riber Castle is this attractive and spacious 4 double bedroom, 3 bathroom family home. Offering 2335 sqft of recently refurbished living accommodation and benefitting from a bay fronted formal lounge, open plan family kitchen, enclosed side and rear garden and off street parking.

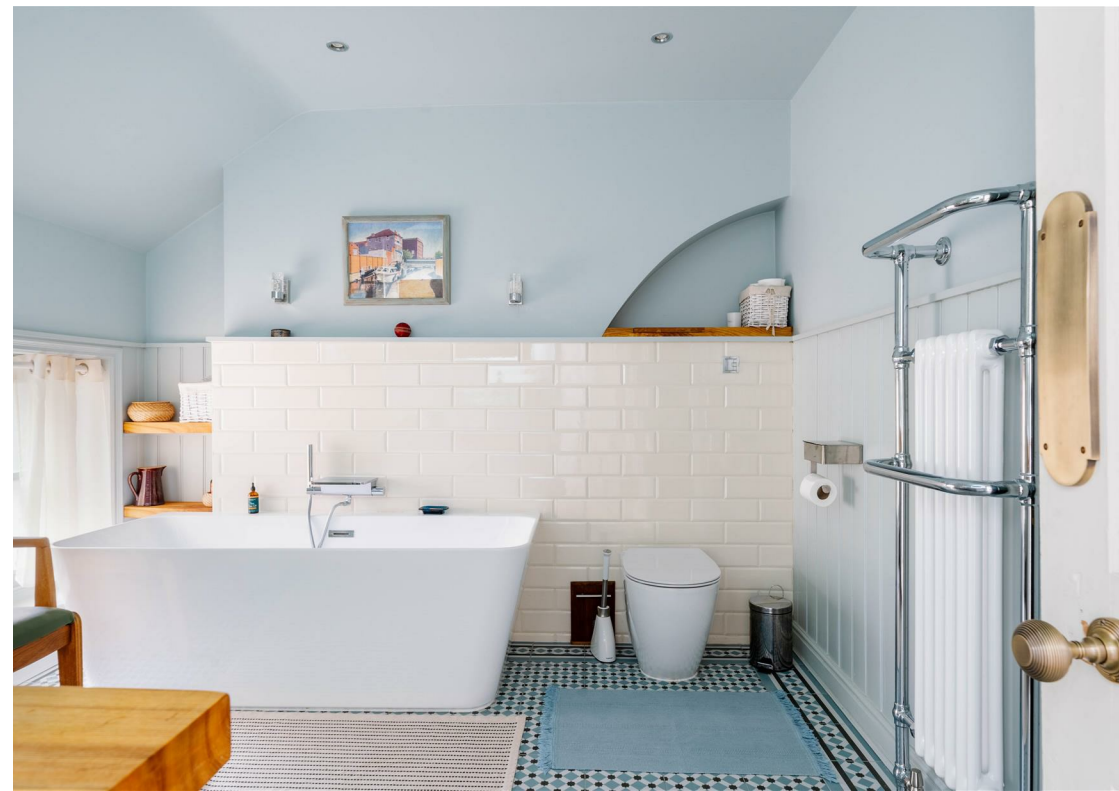
The lower ground floor comprises; Cellar and storage space.

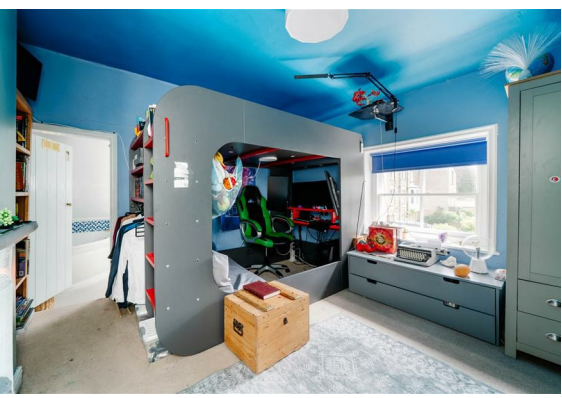
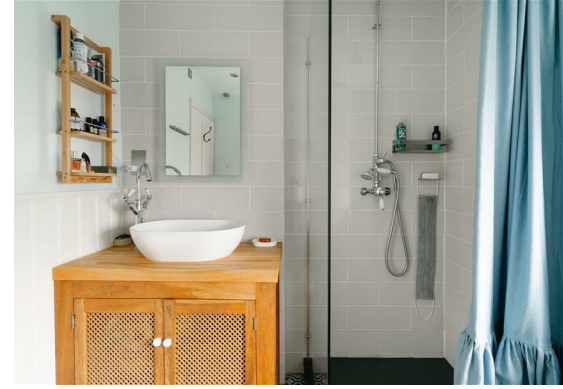
The ground floor comprises; Entrance porch and hallway, front aspect living room with bay window and log burning stove, formal dining room, dual aspect open plan kitchen living space with log burning stove and door onto the side garden.

The first floor comprises; Front aspect double bedroom with bay window and feature fireplace, second double bedroom with feature fireplace, home office, utility room, shower room and separate WC.

The second floor comprises; Master bedroom with built in wardrobe space and ensuite bathroom. A further double bedroom with feature fireplace.

Dales and Peaks ForwardMove
- Please read





Floor Plan



Viewing

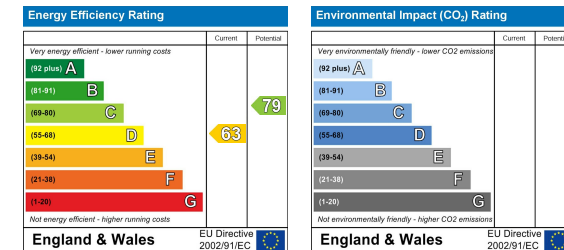
Please contact our Chesterfield Office on 01246 567540 if you wish to arrange a viewing appointment for this property or require further information.

These particulars, whilst believed to be accurate are set out as a general outline only for guidance and do not constitute any part of an offer or contract. Intending purchasers should not rely on them as statements of representation of fact, but must satisfy themselves by inspection or otherwise as to their accuracy. No person in this firm's employment has the authority to make or give any representation or warranty in respect of the property.

Area Map



Energy Efficiency Graph



131 Chatsworth Road, Chesterfield, Derbyshire, S40 2AP
 T: 01246 567540



E: info@dalesandpeaks.co.uk
 www.dalesandpeaks.co.uk