



WV WESTWOODLEBER

WV WESTWOODLEBER
LET US GUIDE YOU HOME

Old Highway, Hoddesdon, EN11 0LS
Guide price £400,000



Old Highway, Hoddesdon, EN11 0LS

Westwood Leber are delighted to bring to the market this beautifully presented two-bedroom semi-detached home, ideally situated on the ever-popular Old Highway in Hoddesdon along with the rare benefit of allocated parking to the rear, an exceptional feature for homes along this road.

This charming property has been tastefully improved by the current owners and offers well-balanced accommodation arranged over three floors, including a converted loft room currently used as an office/dressing space.

The ground floor comprises a bright and spacious living room, leading through to a well-appointed kitchen with access to the rear garden, along with a modern family bathroom.

On the first floor, the property offers two generously sized bedrooms, both presented in excellent condition.

The converted loft room provides a versatile additional space, perfect for those working from home or seeking a dedicated dressing area.

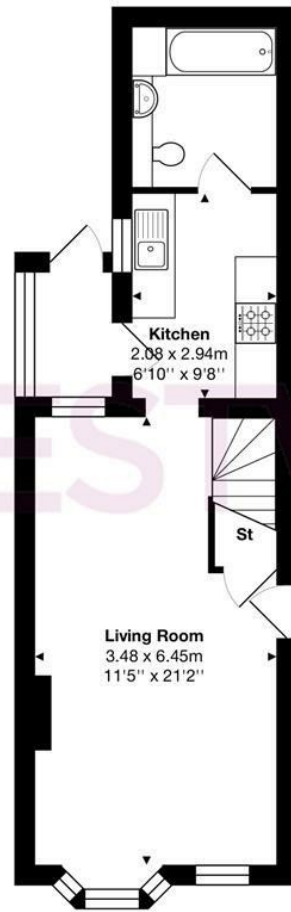
Externally, the property boasts a superb rear garden, ideal for both relaxing and entertaining.



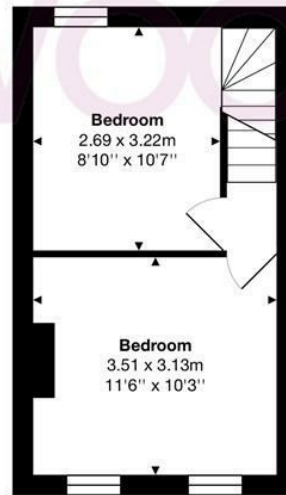
WESTWOODLEBER

WESTWOODLEBER
LET US GUIDE YOU HOME

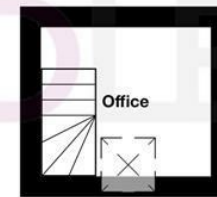
WESTWOODLEBER



Ground Floor



First Floor



Second Floor

Total Area: approx. 65.3 m² ... 703 ft²

THE FLOORPLAN IS FOR ILLUSTRATIVE PURPOSES ONLY AND IS NOT TO SCALE.
Measurements and features are approximate and may differ from the actual property. Verify all details independently; no liability is accepted for errors or omissions.

Property marketing provided by www.fotomarketing.co.uk



WESTWOODLEBER



WESTWOODLEBER



WESTWOODLEBER



WESTWOODLEBER



