

ONE HYDE PARK



KNIGHTSBRIDGE SW7



*Three-bedroom duplex  
in super prime One Hyde  
Park Knightsbridge*







This three-bedroom duplex apartment, with all bedrooms en-suite, provides 3,478 sq ft within One Hyde Park, one of Knightsbridge's most recognised super prime addresses. The building offers a secure private environment with services designed around security discretion and resident experience.

#### KEY FEATURES

- Prime Knightsbridge position
- Duplex layout with reception opening to a private terrace
- Access to Mandarin Oriental services
- 24/7 Concierge
- Secure underground parking space

The apartment sits in a development known for its managed service culture and hotel-level operational standards. Residents benefit from dedicated leisure and entertainment amenities within the building, along with a support framework that defines One Hyde Park's place in the super prime sector.











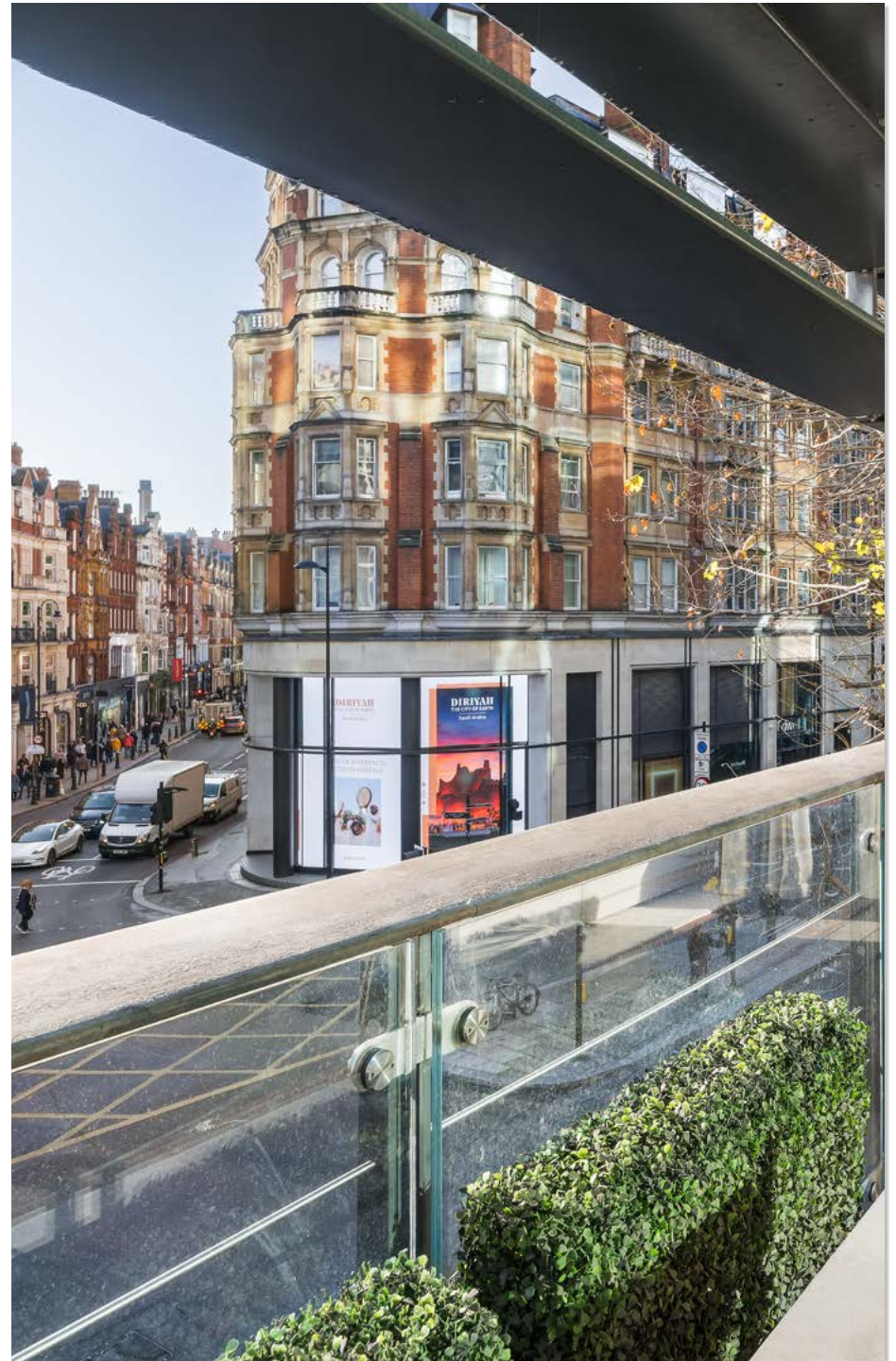
## LOCATION

One Hyde Park occupies a central Knightsbridge position opposite Hyde Park and moments from local retail, dining and hotel anchors. The building is less than 100 metres from Knightsbridge underground station on the Piccadilly Line, placing it at the core of one of London's most established super prime zones.



## ACCOMMODATION

- Reception room opening to balcony
- Dining room
- Principal bedroom with dressing room and en-suite bathroom
- Second bedroom with dressing room and en-suite bathroom
- Third bedroom with en-suite bathroom
- WC
- Extensive storage throughout



## TERMS

**Tenure** Leasehold, 988 years

**Guide Price** £20,500,000

**Local Authority** Westminster

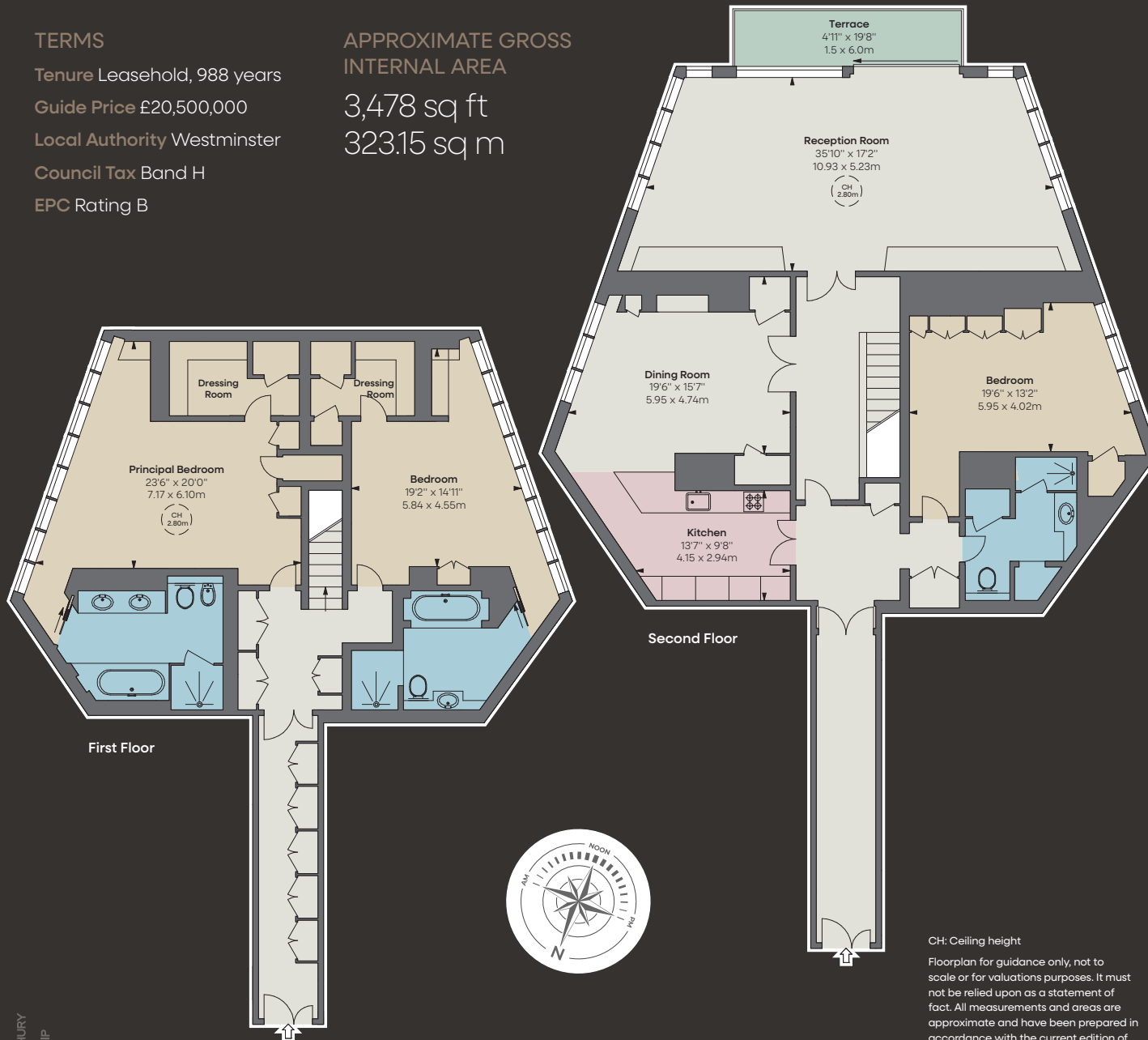
**Council Tax** Band H

**EPC Rating** B

## APPROXIMATE GROSS INTERNAL AREA

3,478 sq ft

323.15 sq m



CH: Ceiling height

Floorplan for guidance only, not to scale or for valuations purposes. It must not be relied upon as a statement of fact. All measurements and areas are approximate and have been prepared in accordance with the current edition of the RICS Code of Measuring Practice.

© Alex Winship Photography Ltd.

Beauchamp Estates, their clients and any joint agents give notice that: 1. They are not authorised to make or give any representation or warranties in relation to the property either here or elsewhere, either on their own behalf or on behalf of their client or otherwise. They assume no responsibility for any statement that may be made in these particulars. These particulars do not form part of any offer or contract and must not be relied upon as statements or representations of fact. 2. Any Areas, measurements or distances are approximate. The text photographs and plans are for guidance only and are not necessarily comprehensive. It should not be assumed that the property has all necessary planning, building regulation or other consents and Beauchamp Estates have not tested any services, equipment or facilities. Purchasers must satisfy themselves by inspection or otherwise. 10/12/25 BEAU-251209-05-MS



**BEAUCHAMP  
ESTATES**

**+44 (0)20 7499 7722**

Beauchamp Estates Head Office  
24 Curzon Street  
Mayfair, London W1J 7TF  
londonsales@beauchamp.com  
beauchamp.com