

## St. Philip Street, SW8

£5,000 Per calendar month

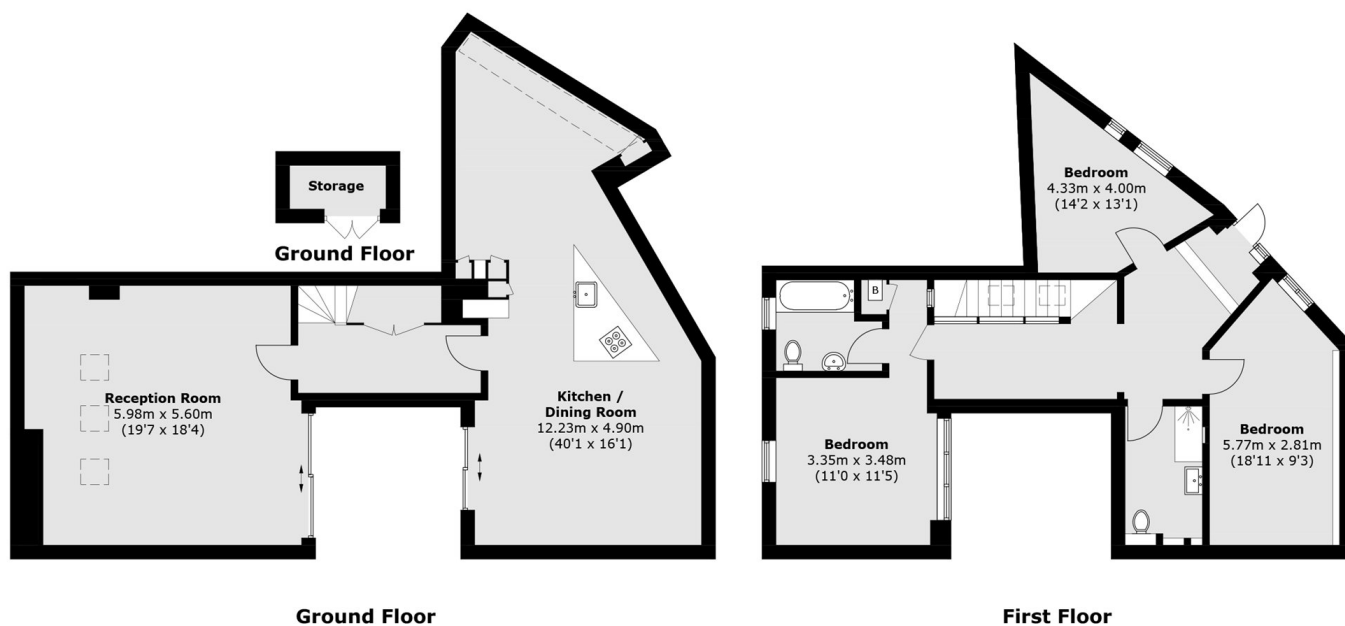
A recently built three bedroom semi-detached house located in the Diamond Conservation Area of Battersea. This extraordinary and unique property has been architecturally designed by a local multi-award winning developer and has been meticulously finished to the highest of standards.

Located on St Philip Street, the property is ideally located within the Diamond Conservation Area and is within easy of Queenstown Road and Wandsworth Road Overground Stations which both provide easy access into Central London. The many shops and cafes of Lavender Hill, Queenstown Road and Wandsworth Road can also be found close by

### Features

- Four Bedrooms
- Separate Kitchen with Snug
- Underfloor Heating
- Private Courtyard
- Architecturally Designed
- Diamond Conservation Area

# St. Philip Street, London, SW8



Total area (approx.): 154.3 sq. m (1,660.8 sq. ft)  
Storage: 2.1 sq. m (22.6 sq. ft)