



Abbeville Road, SW4

£2,100 Per calendar month

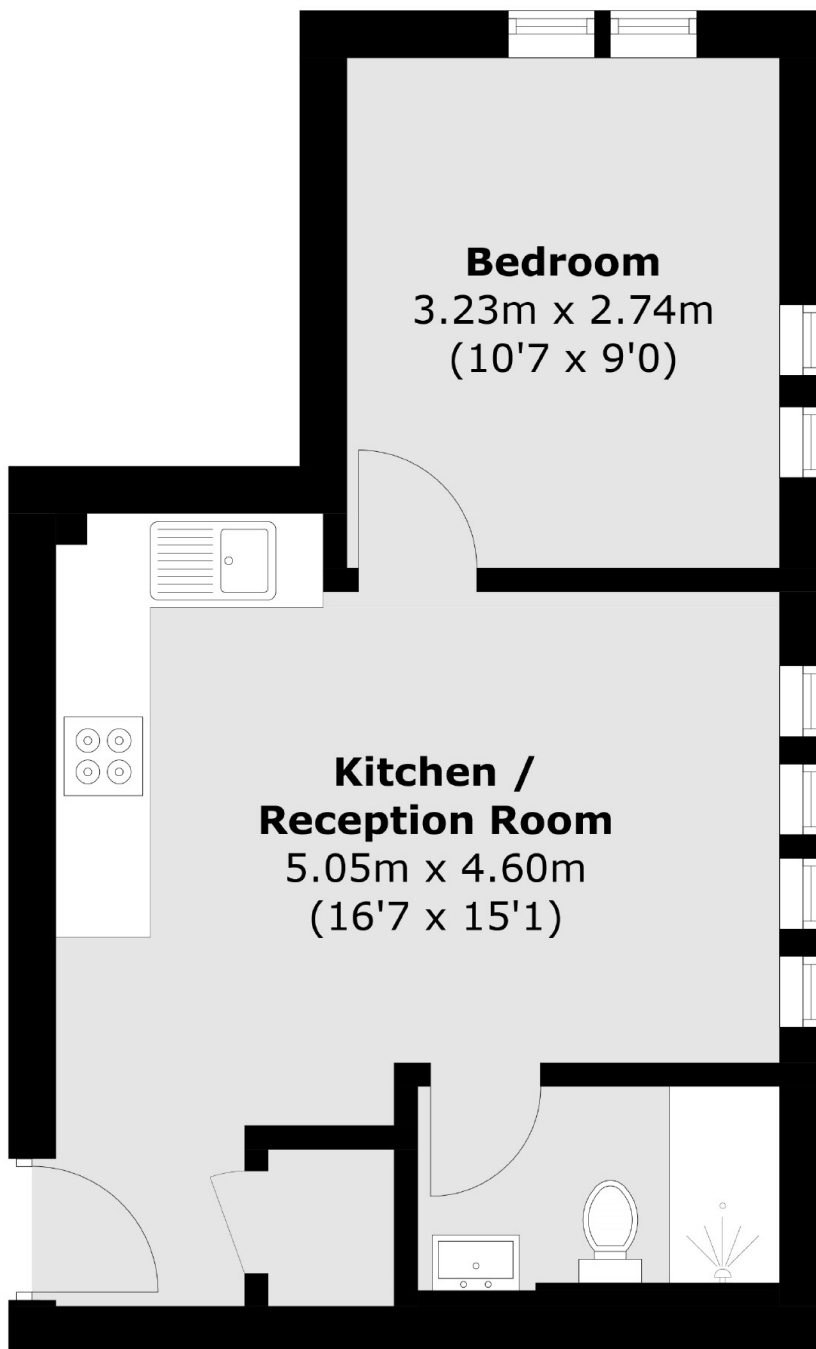
A contemporary first floor apartment situated within private gated development. Comprising an open plan reception room with an integrated kitchen, a double bedroom and a bathroom.

Abbeville Road is located moments from the local shops, restaurants and cafés of the Abbeville Village. Clapham Common and Clapham South stations are within close proximity.

Features

- One Double Bedroom
- Open Plan Reception
- Modern Kitchen
- Private Development
- Secure Bike Storage
- Abbeville Village

Abbeville Road, London, SW4



Total area (approx.): 31.3 sq. m (336.9 sq. ft)

Dexters

Clapham High Street
55 Clapham High Street
London
SW4 7TG
Lettings
020 7483 6364

Energy Rating: C. We aim to make our particulars both accurate and reliable. However they are not guaranteed; nor do they form part of an offer or contract. If you require clarification on any points then please contact us, especially if you're traveling some distance to view. Please note that appliances and heating systems have not been tested and therefore no warranties can be given as to their good working order.

 **RICS** | Regulated
Estate Agent
and Letting Agent

dexters.co.uk