



## Mossbury Road, SW11

£425,000

A one double bedroom ground floor garden flat set in a beautiful Victorian building situated on the sought after Mossbury Road. The apartment comprises of a double bedroom, reception room with high ceilings, modern kitchen, family bathroom & private garden. The property benefits further from being sold chain free.

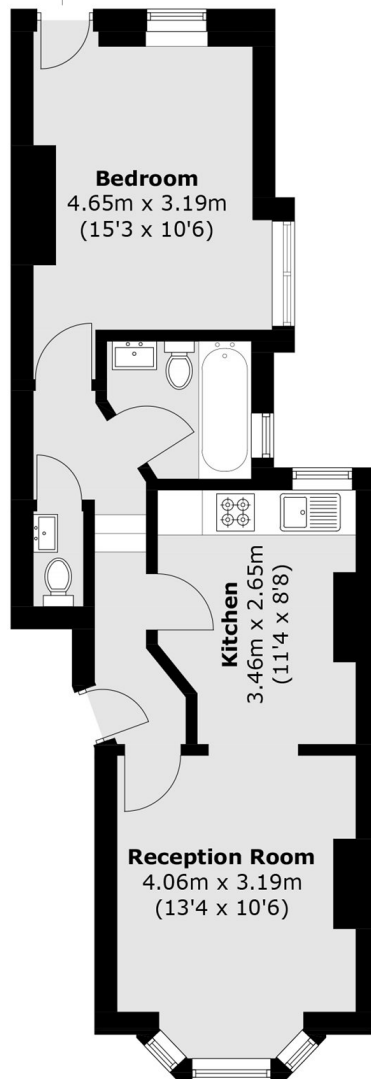
Mossbury Road is a sought after street located moments from the green open spaces of Wandsworth Common and close to the eclectic mix of bars, restaurants and boutiques on St. John's Hill & Northcote Road. Clapham Junction Station is literally around the corner.

### Features

- Period Conversion
- Modern Kitchen
- Private Garden
- Superb Location
- Chain Free

# Mossbury Road, London, SW11

To Garden



Total area (approx.): 44.0 sq. m (473.6 sq. ft)