



## Shelson Avenue, TW13

£575,000

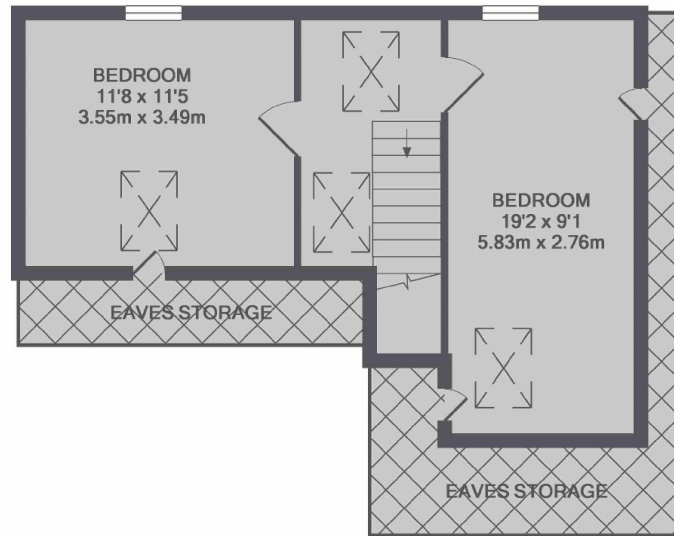
This is a detached three bedroom, two bathroom bungalow coming with off-street parking, a private a garden and the benefit of no onward chain. It neatly would suit a family, downsizer or investor.

Shelson Avenue is great for a commuter needing the A316. With local shops, Feltham Station and many convenient bus routes nearby, this property isn't going to be around for long.

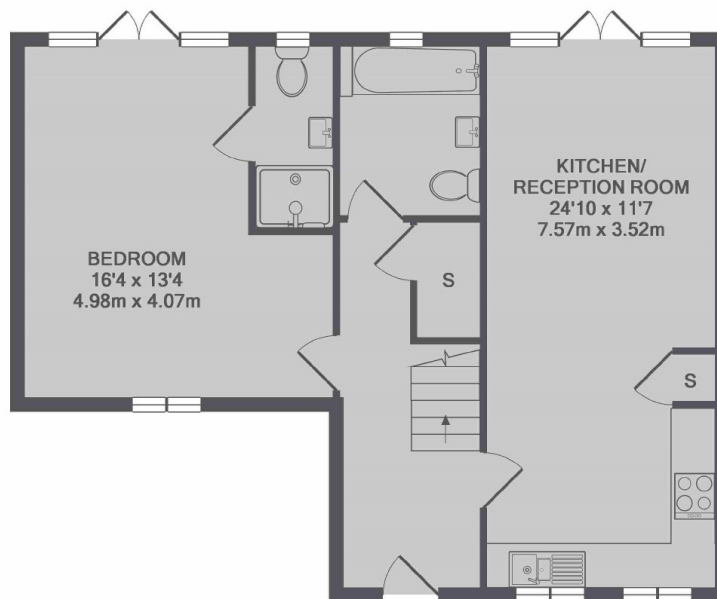
### Features

- Detached Bungalow
- Three Bedrooms
- Two Bathrooms
- Private Garden
- Off-Street Parking
- No Onward Chain

# Shelson Avenue, Feltham, TW13



1ST FLOOR



GROUND FLOOR

TOTAL APPROX. FLOOR AREA 1063 SQ.FT. (98.7 SQ.M.)