



Flat 8, 604 Ashley Road, Poole

Poole

Offers in Region of **£180,000**



Flat 8

604 Ashley Road, Poole

Council Tax band: A

Tenure: Leasehold

EPC Energy Efficiency Rating: D

EPC Environmental Impact Rating: D

- AMAZING VALUE
- LONG LEASE
- NO CHAIN
- SHORT WALK INTO ASHLEY CROSS/ASHLEY ROAD
- ALLOCATED PARKING
- BALCONY
- FOLLOW US ON SOCIALS @ENFIELDSPOOLE
- BH14 POSTCODE



Bedroom 1
12' 2" x 13' 5" (3.70m x 4.10m)

Bedroom 2
12' 2" x 13' 1" (3.70m x 4.00m)

Kitchen
9' 6" x 9' 2" (2.90m x 2.80m)

Lounge
8' 2" x 13' 9" (2.50m x 4.20m)





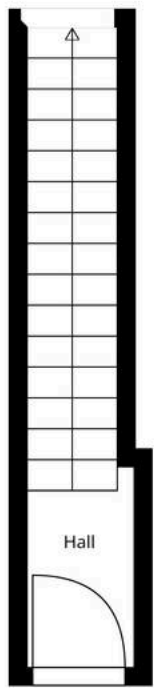
BALCONY

ALLOCATED PARKING

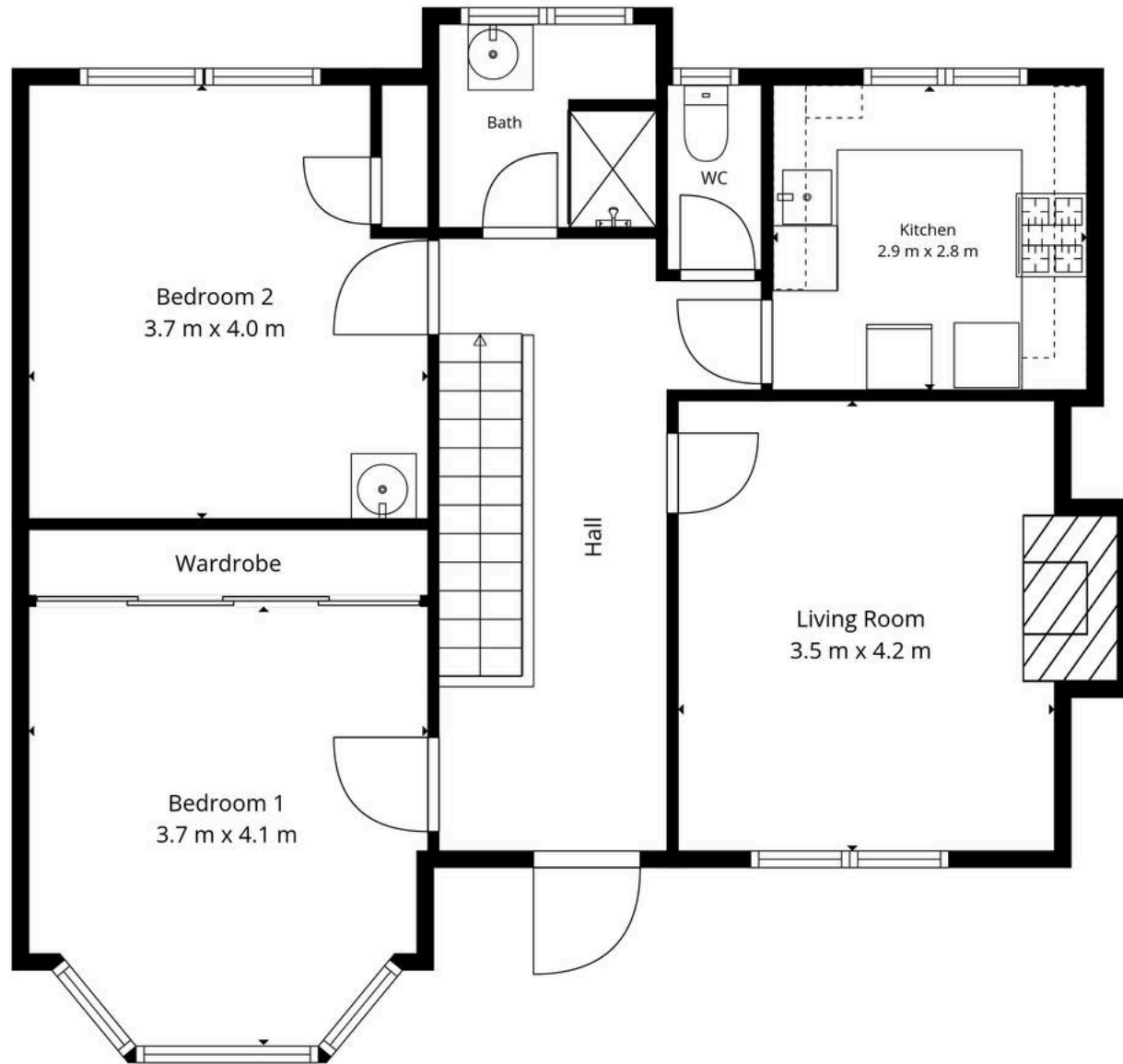
1 Parking Space

Allocated parking space





Ground Floor



1st Floor

Total: 77 m²

Ground Floor: 4 M², 1st Floor: 73 m²

Excluded Areas: Wardrobe: 2 M², Fireplace: 1 M², Walls: 7 m²





Enfields

241 Ashley Rd, Poole - BH14 9DS

01202635870

jackfletcher@enfields.co.uk

www.enfields.co.uk/