



Marsh Lane, NW7

£2,600 Per calendar month

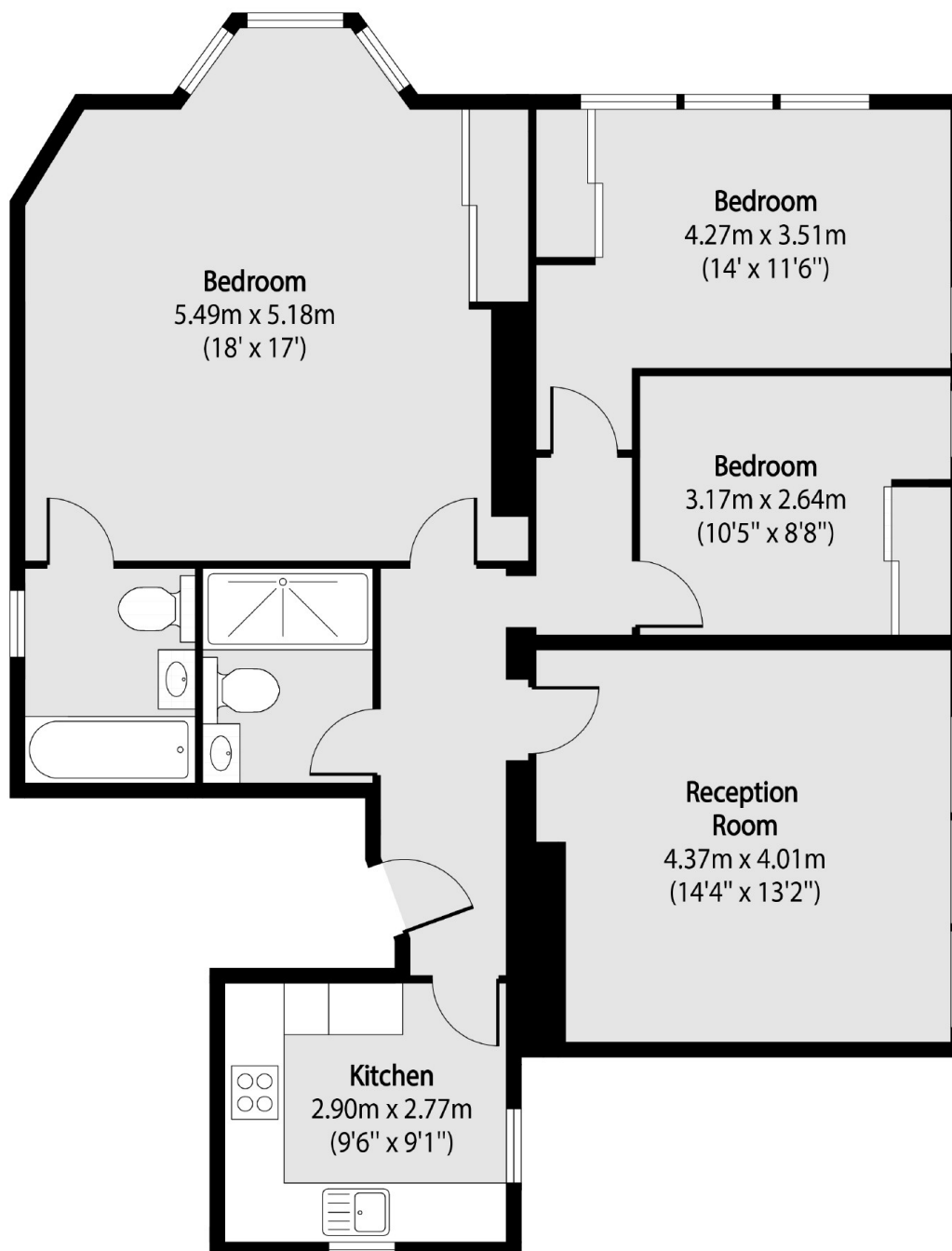
Dexters are very pleased to bring this stunning three bedroom, furnished flat to the market for rent in the very desirable Mill Hill area. The property is a first floor conversion flat refurbished to a very high standard boasting two modern bathroom suites, modern fully fitted kitchen, good size lounge and three double bedrooms. The property comes with off street parking for one car and a private rear garden.

Nearest Tube link is Edgware Station which is on the Northern line plus local bus links.

Features

- Three Double Bedrooms
- Modern Fully Fitted Kitchen
- Two Modern Bathrooms
- Furnished
- Private Rear Garden
- Off Street Parking 1 Car
- Very Spacious Throughout

Marsh Lane, London, NW7



Total area (approx): 89.46 sq m (963 sq. ft)