

Royal College Street, NW1

£2,700 Per calendar month

A two bedroom flat, this property boasts an open plan living-dining area, a private balcony and hardwood flooring throughout.

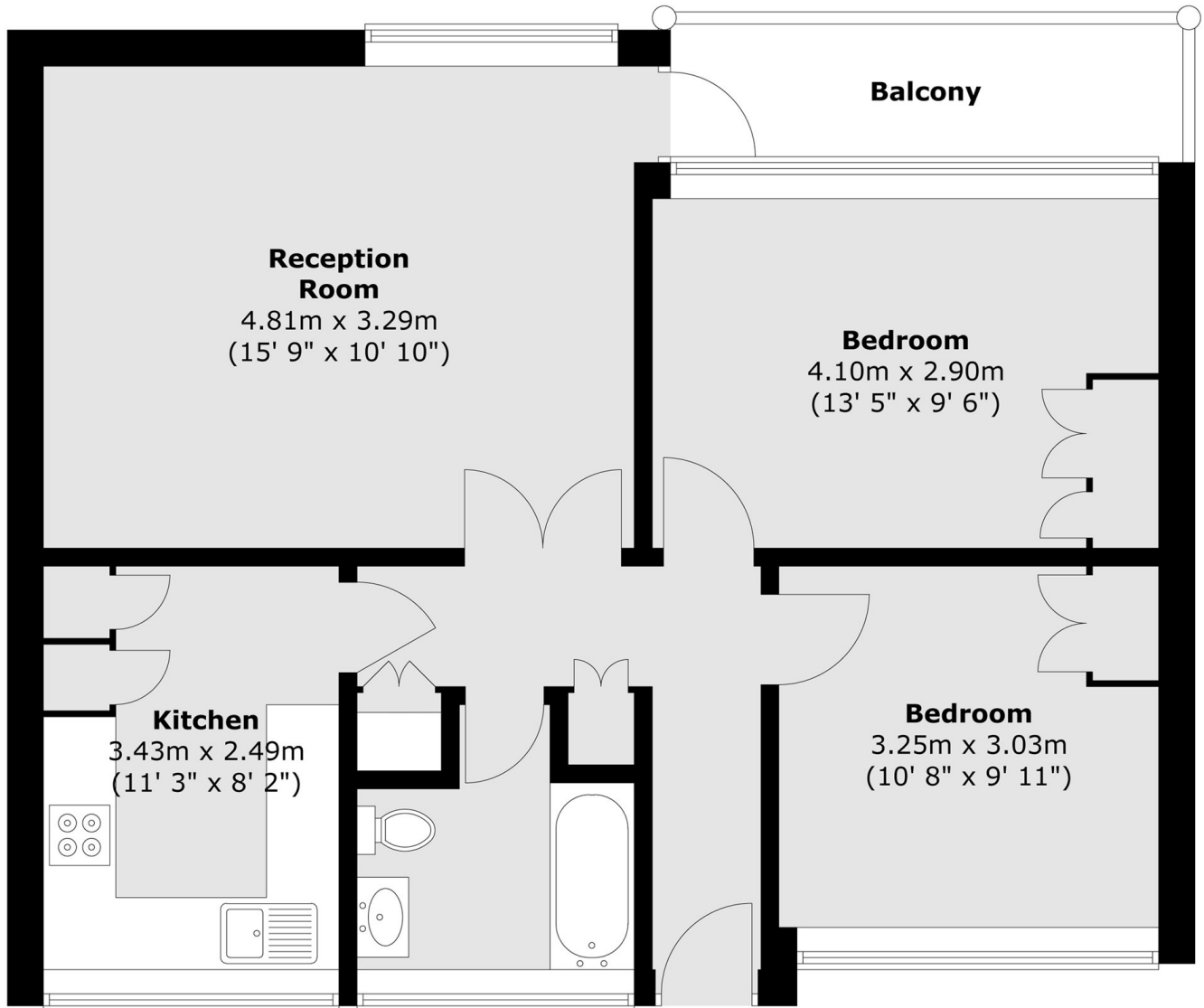
Royal College Street is located in the heart of Camden Town only a short walk away from Camden Town Tube Station (Northern Line)

Features

- Two Bed Flat
- Private Balcony
- Hardwood Flooring
- White Goods
- Local Amenities
- Great Transport Links

Royal College Street,
London, NW1

Second Floor



Total area (approx.) : 63.8 sq. m (687 sq. ft)
Total balcony area (approx.) : 4.9 sq. m (53 sq. ft)