



Heathcote Avenue, IG5

£1,750 Per week

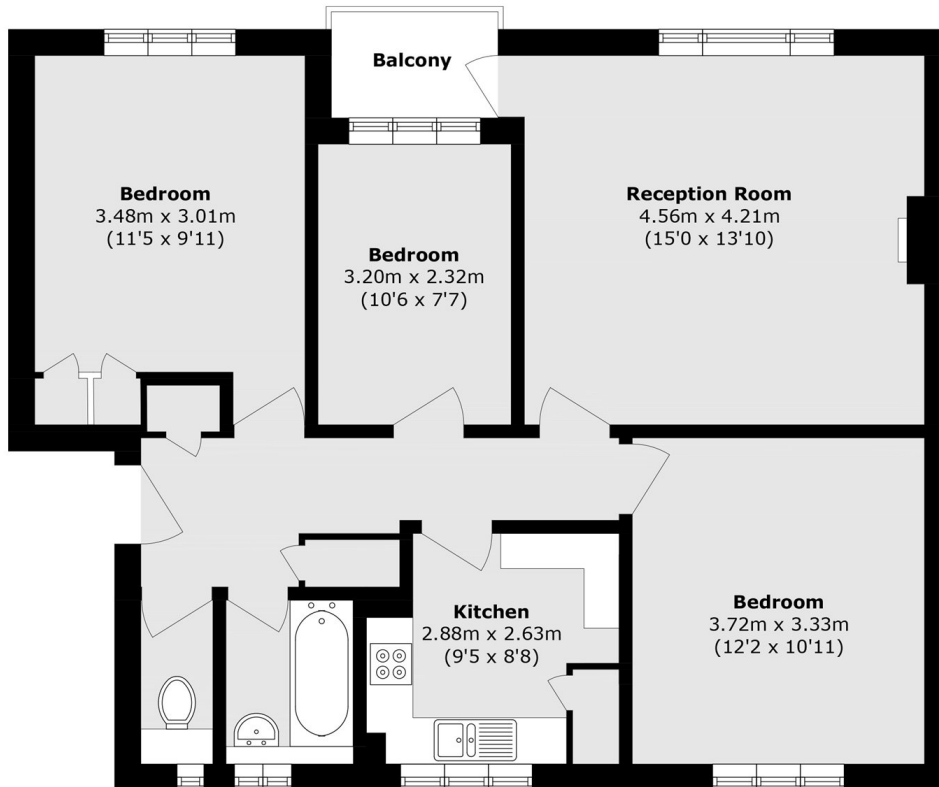
A three bedroom apartment on the top floor Heathcote Court. This well presented property has a separate kitchen, wooden flooring throughout, balcony that comes unfurnished.

Situated within the popular residential area of Clayhall, in the heart of Redbridge with nearby transport links including South Woodford Underground Station (Central Line), providing direct routes into Central London, making it ideal for commuters. A range of local shops, schools, and green spaces such as Claybury Park are also within easy reach.

Features

- Three Double Bedrooms
- Balcony
- Wooden Flooring
- Separate kitchen
- Unfurnished
- Top floor

Heathcote Avenue, Ilford, IG5



Total area (approx.): 73.8 sq. m (794.4 sq. ft)

Balcony area (approx.): 2.5 sq. m (26.9 sq. ft)