



Connells

Sandfield Grove
Lower Gornal Dudley

Sandfield Grove

Lower Gornal Dudley DY3 2RS

for sale
£220,000



Property Description

This well-maintained semi-detached home is situated in a sought-after residential area of Lower Gornal. The property features move-in-ready living spaces that have been thoughtfully updated by the current owners, including a modern fitted gloss kitchen and a refreshed family bathroom. Originally designed as a two-bedroom home, it has been modified with a partition wall to create a versatile study or dressing area. Additionally, its prime location offers easy access to Gornal Village, local schools, amenities, and the scenic Himley Hall Park.

Entrance Hall

Double glazed door to the front elevation, stairs to first floor accommodation.

Lounge

16' 5" x 10' 5" (5.00m x 3.17m)

Double glazed windows to the front & rear elevations, electric fire with feature surround, central heating radiator.

Kitchen / Dining Room

16' 5" x 10' 9" (5.00m x 3.28m)

A fitted gloss kitchen to include a range of wall and base units with rolltop work surfaces over, tiling to splashback, stainless steel sink & drainer unit with mixer tap over, electric oven & gas hob with extractor hood over, integrated microwave, dishwasher, space for domestic appliances, central heating radiator, double glazed window to the front & rear elevations.

Lobby

Door to the front & rear leading to front & garden.

Utility Room

8' 2" x 6' 3" (2.49m x 1.91m)

Wall mounted units, work surfaces, plumbing for washing machine, space for domestic appliances, tiling to splashback, double glazed window to the front.

Cloakroom

W.c.

First Floor

Landing

Loft access, double glazed window to the rear.

Bedroom One

10' 4" x 10' 3" (3.15m x 3.12m)

Double glazed window to the front elevation, fitted wardrobes, central heating radiator.

Bedroom Two

8' 1" x 8' 1" (2.46m x 2.46m)

Double glazed window to the rear elevation, central heating radiator.

Store / Study Room

11' 3" x 8' 8" (3.43m x 2.64m)

Double glazed window to the front elevation, built-in storage cupboard, central heating radiator.

Bathroom

Suite to comprise bath with main shower over, wash hand basin in vanity unit, low level w.c., heated towel rail, tiling, double glazed window to the rear.

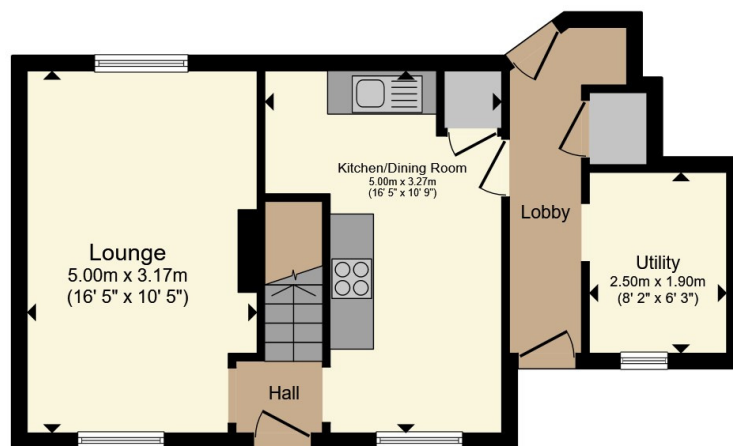
Outside

To the front of the property gravel detail, gravel foregarden with step approach to front door. Rear garden having slabbed paved area with path approach, lawned area.

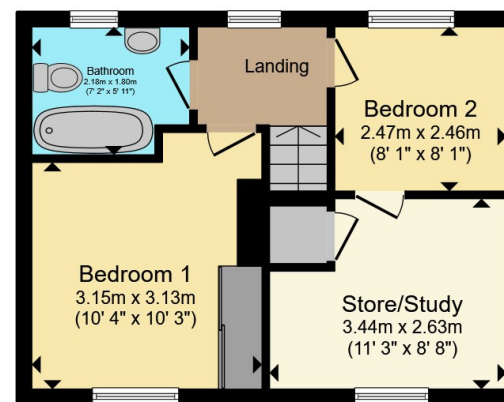








Ground Floor



First Floor

Total floor area 76.6 m² (825 sq.ft.) approx

This floor plan is for illustrative purposes only. It is not drawn to scale. Any measurements, floor areas (including any total floor area), openings and orientation are approximate. No details are guaranteed, they cannot be relied upon for any purpose and they do not form part of any agreement. No liability is taken for any error, omission or misstatement. A party must rely upon its own inspection(s). Powered by www.propertybox.io



To view this property please contact Connells on

T 01384 214 770
E dudley@connells.co.uk

4 & 5 Stone Street
 DUDLEY DY1 1NS

EPC Rating: Awaited
 Council Tax Band: A

Tenure: Freehold

view this property online connells.co.uk/Property/DUD314466



1. MONEY LAUNDERING REGULATIONS Intending purchasers will be asked to produce identification documentation at a later stage and we would ask for your co-operation in order that there will be no delay in agreeing the sale. 2. These particulars do not constitute part or all of an offer or contract. 3. The measurements indicated are supplied for guidance only and as such must be considered incorrect. Potential buyers are advised to recheck measurements before committing to any expense. 4. We have not tested any apparatus, equipment, fixtures, fittings or services and it is in the buyers interest to check the working condition of any appliances.

Connells Residential is registered in England and Wales under company number 1489613, Registered Office is Cumbria House, 16-20 Hockliffe Street, Leighton Buzzard, Bedfordshire, LU7 1GN. VAT Registration Number is 500 2481 05.

See all our properties at www.connells.co.uk | www.rightmove.co.uk | www.zoopla.co.uk

Property Ref: DUD314466 - 0003