



## New Quebec Street, W1H

£5,633 Per calendar month

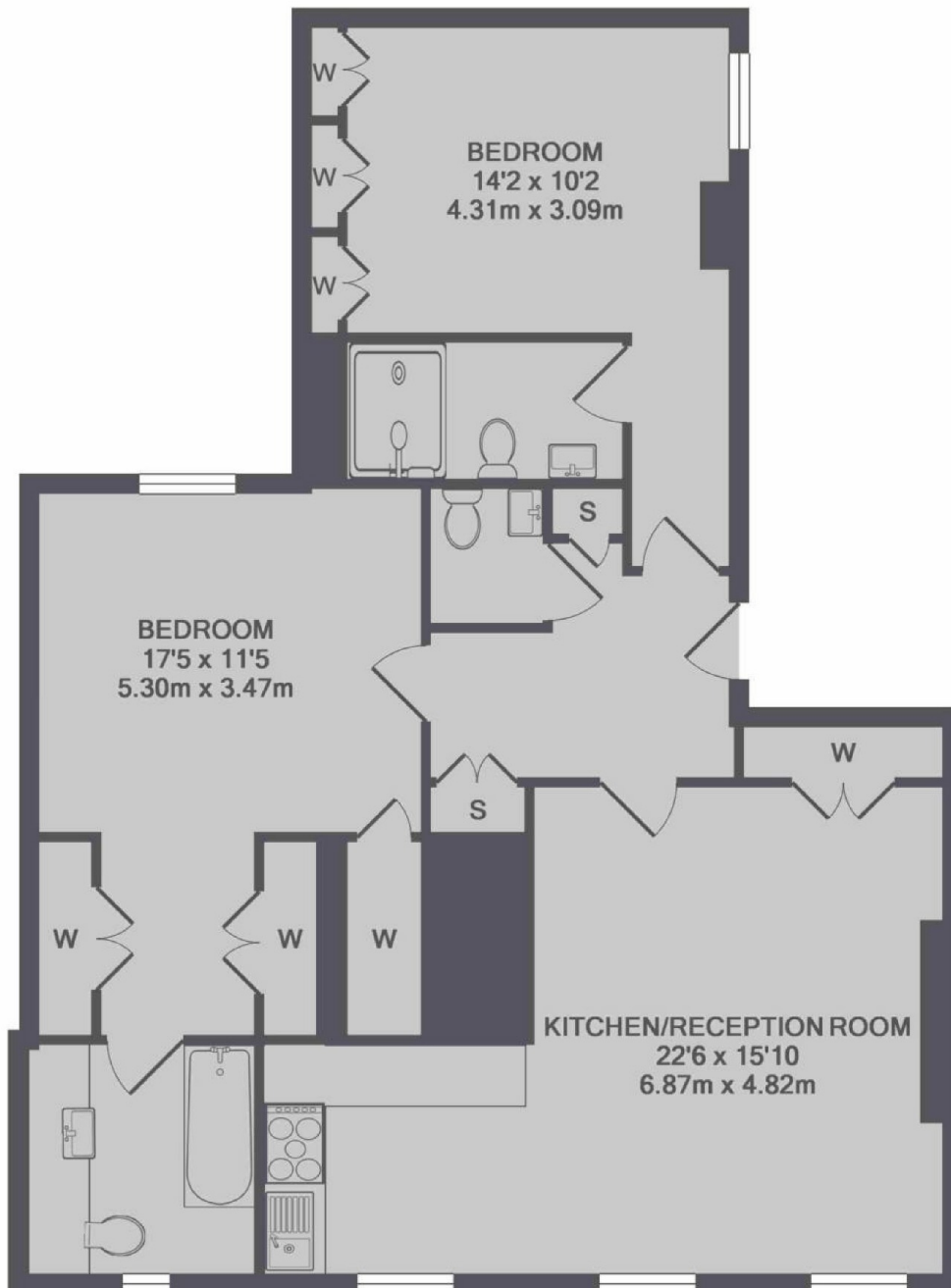
A lateral apartment on the first floor of this period conversion in the heart of Portman Village. The flat has an open-plan kitchen/reception, two double bedrooms, two bathrooms and a guest WC.

New Quebec Street is in the heart of Portman Village which has some of the most vibrant and independent restaurants and boutique shops in London. Marble Arch and Bond Street stations are close by, as well as the open spaces of Hyde Park.

### Features

- First Floor Flat
- Two Bedrooms
- Two Bathrooms
- Unfurnished
- The Portman Estate

# New Quebec Street, London, W1H



TOTAL APPROX. FLOOR AREA 933 SQ.FT. (86.7 SQ.M.)