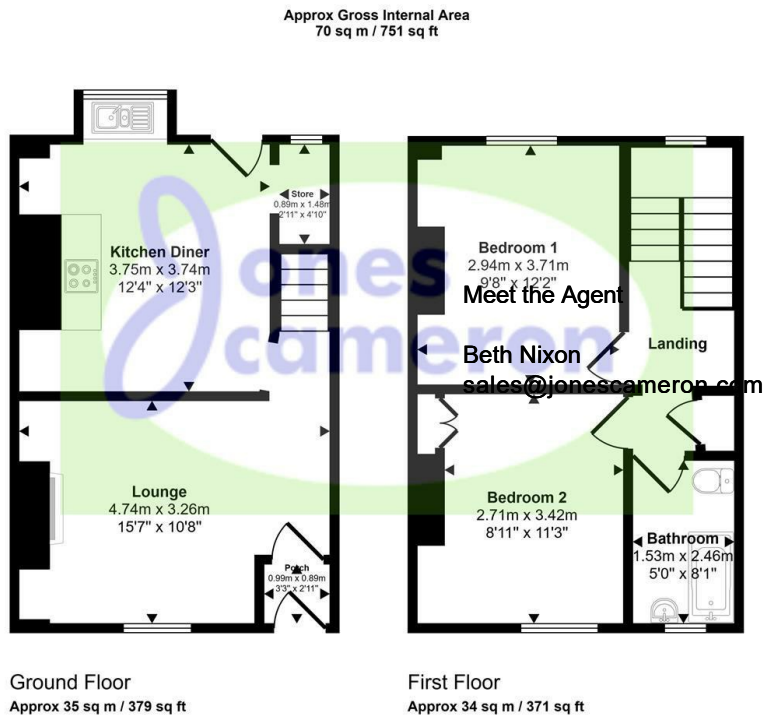




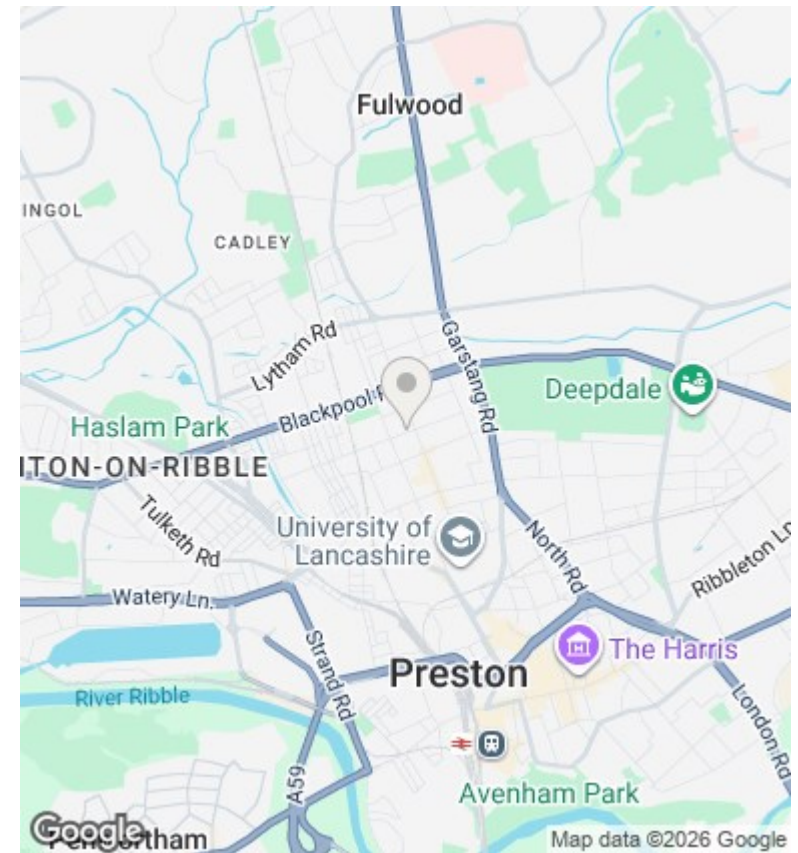
## 50 Wildman Street, Preston, PR1 7QJ

Asking Price £102,000

- On Street Parking
- Double Glazed Throughout
- Modernisation Required
- Two Bedrooms
- Gas Central Heating
- Investment Opportunity



This floorplan is only for illustrative purposes and is not to scale. Measurements of rooms, doors, windows, and any items are approximate and no responsibility is taken for any error, omission or mis-statement. Icons of items such as bathroom suites are representations only and may not look like the real items. Made with Made Snappy 360.



Meet the Agent:  
Beth Nixon  
sales@jonescameron.com

Viewings  
Viewings by arrangement only. Call 01772 888 887 to make an appointment.

Council Tax Band

A

EPC Rating:

D

Energy Efficiency Rating		Current	Potential
<i>Very energy efficient - lower running costs</i>			
(92 plus)	A		
(81-91)	B		85
(69-80)	C		
(55-68)	D	64	
(39-54)	E		
(21-38)	F		
(1-20)	G		
<i>Not energy efficient - higher running costs</i>			
<b>England &amp; Wales</b>		EU Directive 2002/91/EC	