



**RE/MAX**  
Elite



**Flat 106 Transmission House, 11 Tib Street, Manchester, M4 1AE**

**£1,500 Per month**

STUNNING FULLY FURNISHED 2 BEDROOM APARTMENT IN THE HEART OF MANCHESTER'S NORTHERN QUARTER

A larger than average two-bathroom apartment in the heart of Manchester's vibrant Northern Quarter. Located in the sought-after Transmission House development, this stylish home is fully furnished, move-in ready, and includes access to premium resident facilities including a rooftop garden, 24/7 concierge, secure bike room and secure fob entry.

#### **FOYER 4'5" x 12'5" (1.35m x 3.80m)**

A welcoming hallway with access to both bedrooms, bathrooms and the living area. Finished in neutral tones with carpeted flooring.

#### **LIVING ROOM 16'1" x 14'7" (4.91m x 4.45m)**

Generously sized lounge area with plush grey sofas and coffee table. Floor-to-ceiling windows bathe the space in natural light, offering a bright and airy setting to relax or entertain.

#### **DINING AREA 10'5" x 14'1" (3.19m x 4.31m)**

Located beside the lounge with space for a stylish four-seater glass dining set. Corner layout maximises natural light and views.

#### **KITCHEN 10'6" x 8'9" (3.22m x 2.67m)**

Contemporary high-gloss kitchen with under-cabinet lighting, integrated appliances, and stone-effect countertops. Smart layout with sleek cabinetry and tiled flooring.

#### **PRIMARY BEDROOM 15'5" x 16'0" (4.71m x 4.88m)**

A spacious double bedroom featuring large windows, a double bed, nightstands, and triple wardrobe. Ideal as a master retreat with ample room to personalise.

#### **BEDROOM TWO 14'10" x 10'6" (4.54m x 3.21m)**

Another excellent double bedroom with large wardrobe, drawers, and modern furnishings. Equally suitable for sharers, guests or a home office.

#### **BATHROOM ONE 7'1" x 6'11" (2.18m x 2.12m)**

Modern bathroom with a full-sized bath, overhead shower, WC, sink, heated towel rail and wall-mounted mirror. Clean and elegant tiled design.

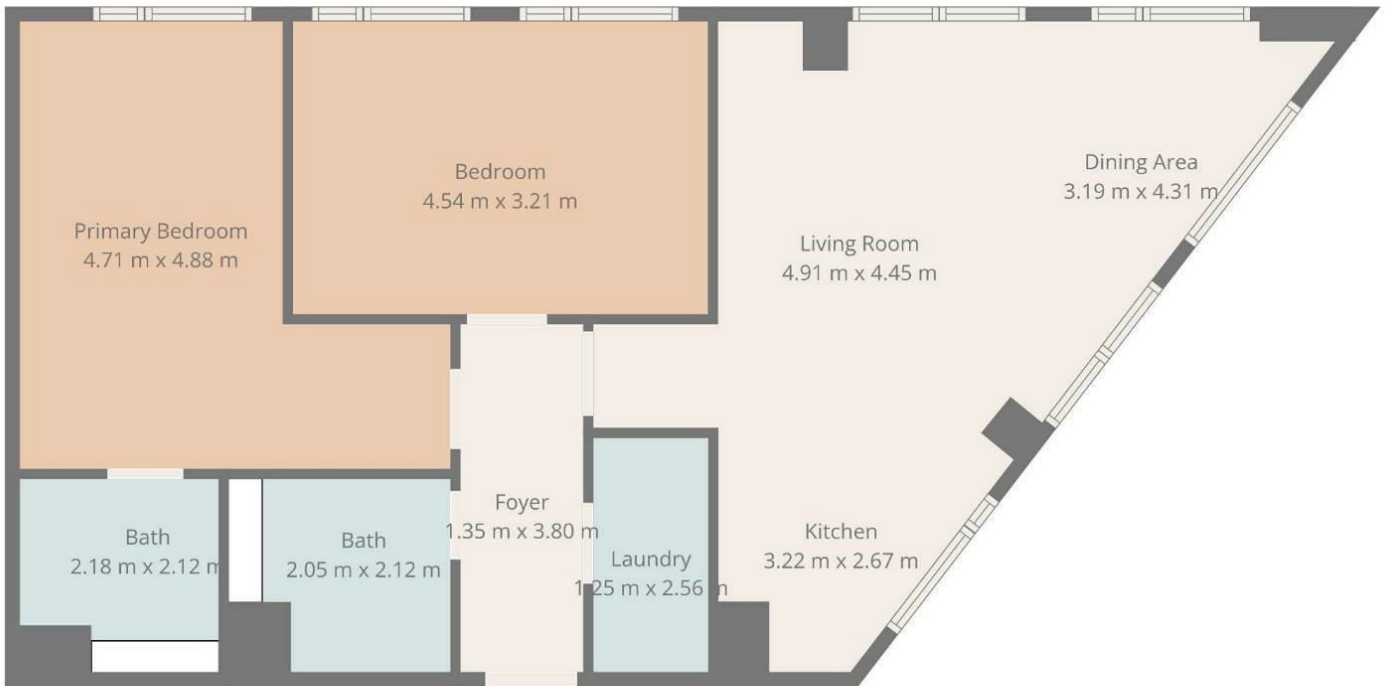
#### **BATHROOM TWO 6'8" x 6'11" (2.05m x 2.12m)**

A second full bathroom, similarly styled, providing convenience for sharers or guests

#### **LAUNDRY ROOM 4'1" x 8'4" (1.25m x 2.56m)**

Dedicated utility space, tucked neatly off the hallway. Perfect for laundry and storage.

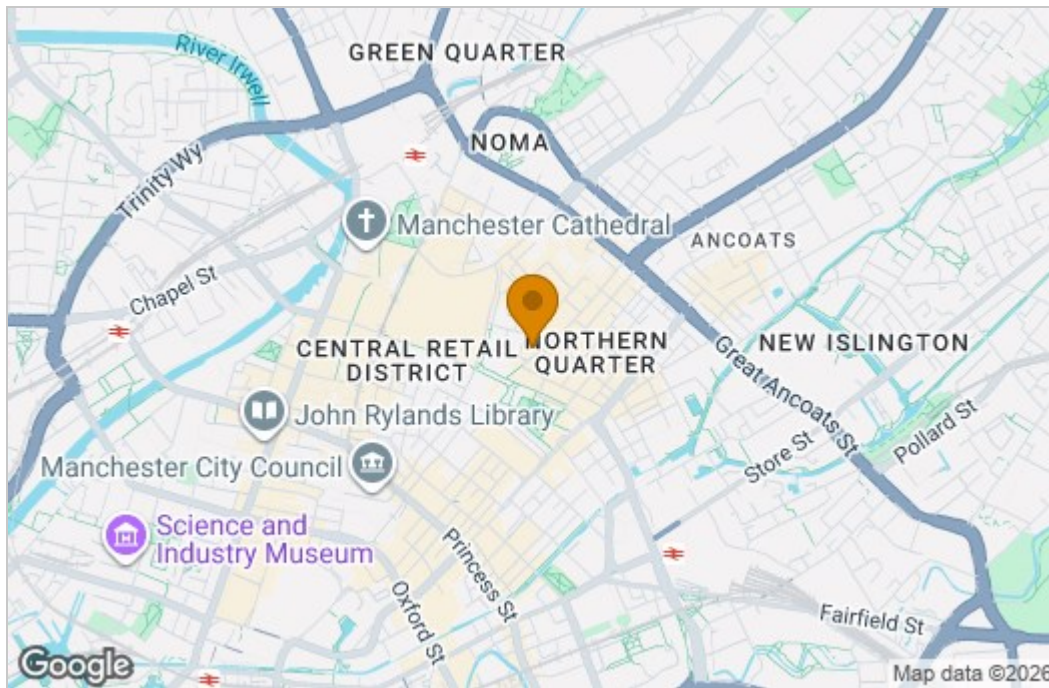
# Floor Plan



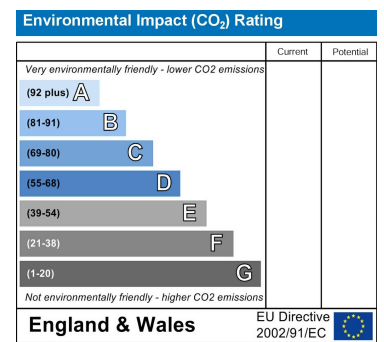
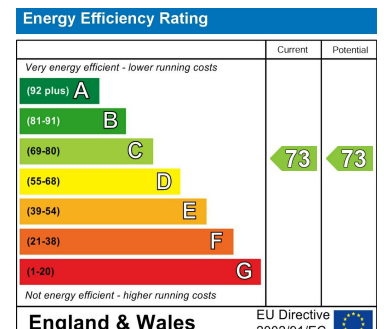
**TOTAL: 84 m2**  
**FLOOR 1: 84 m2**  
**EXCLUDED AREAS: WALLS: 6 m2**

Floor Plan Created By Cubicasa App. Measurements Deemed Highly Reliable But Not Guaranteed.

# Area Map



# Energy Efficiency Graph



These particulars, whilst believed to be accurate are set out as a general outline only for guidance and do not constitute any part of an offer or contract. Intending purchasers should not rely on them as statements of representation of fact, but must satisfy themselves by inspection or otherwise as to their accuracy. No person in this firm's employment has the authority to make or give any representation or warranty in respect of the property.