



Aberdeen Place

St John's Wood, NW8

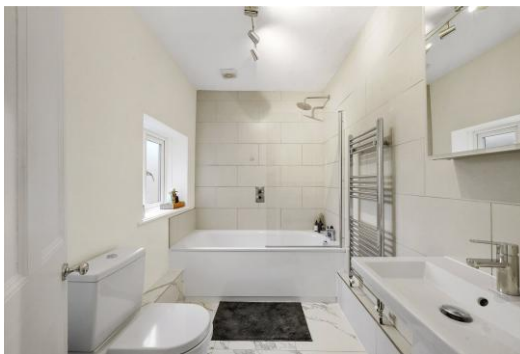
Asking Price £995,000

Sole Agent. Set within an elegant period conversion, this beautifully presented two-bedroom, two-bathroom duplex apartment offers a perfect blend of classic character and contemporary living. Ideally positioned in the highly desirable St John's Wood area and just a short distance from the picturesque canals and cafés of Little Venice.

Arranged over two floors, the apartment provides a bright and well-proportioned layout. The spacious living area offers an inviting setting for both relaxing and entertaining, while the well-appointed kitchen is thoughtfully designed for modern living. Large windows enhance the sense of space and natural light throughout.

This charming duplex benefits from the character and architectural details typical of a period building while providing the convenience of contemporary finishes. Its location places it within easy reach of local boutiques, cafés, and restaurants, as well as excellent transport links and the green open spaces of nearby parks.

CHESTERTONS



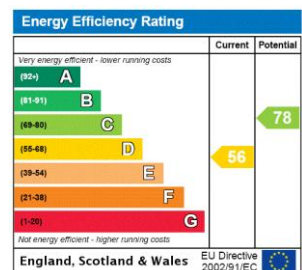
Aberdeen Place

St John's Wood, NW8

- 2 Bedroom 2 Bathroom Apartment
- 145 Year Leasehold
- 1,004 sq. ft.
- Very Good Condition
- Close to Little Venice



Tenure: Leasehold
Service Charge: £3,885pa
Ground Rent: £0
Local Authority: Westminster
Council Tax Band: F

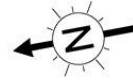


Chestertons St John's Wood Sales

105 St. John's Wood Terrace
London
NW8 6PL
stjohnswood@chestertons.co.uk
020 3040 8611
chestertons.co.uk

Aberdeen Place, NW8 8JR

Approx Gross Internal Area = 93.3 sq m / 1004 sq ft



Ref

Copyright **BLEU
PLAN**

The Floor plan is not to scale and measurements and areas shown are approximate and therefore should be used for illustrative purposes only. The plan has been prepared in accordance with the RICS code of Measuring Practice and whilst we have confidence in the information produced it must not be relied on. If there is any aspect of particular importance, you should carry out or commission your own inspection of the property.

Copyright @ BLEUPLAN

