

Directions

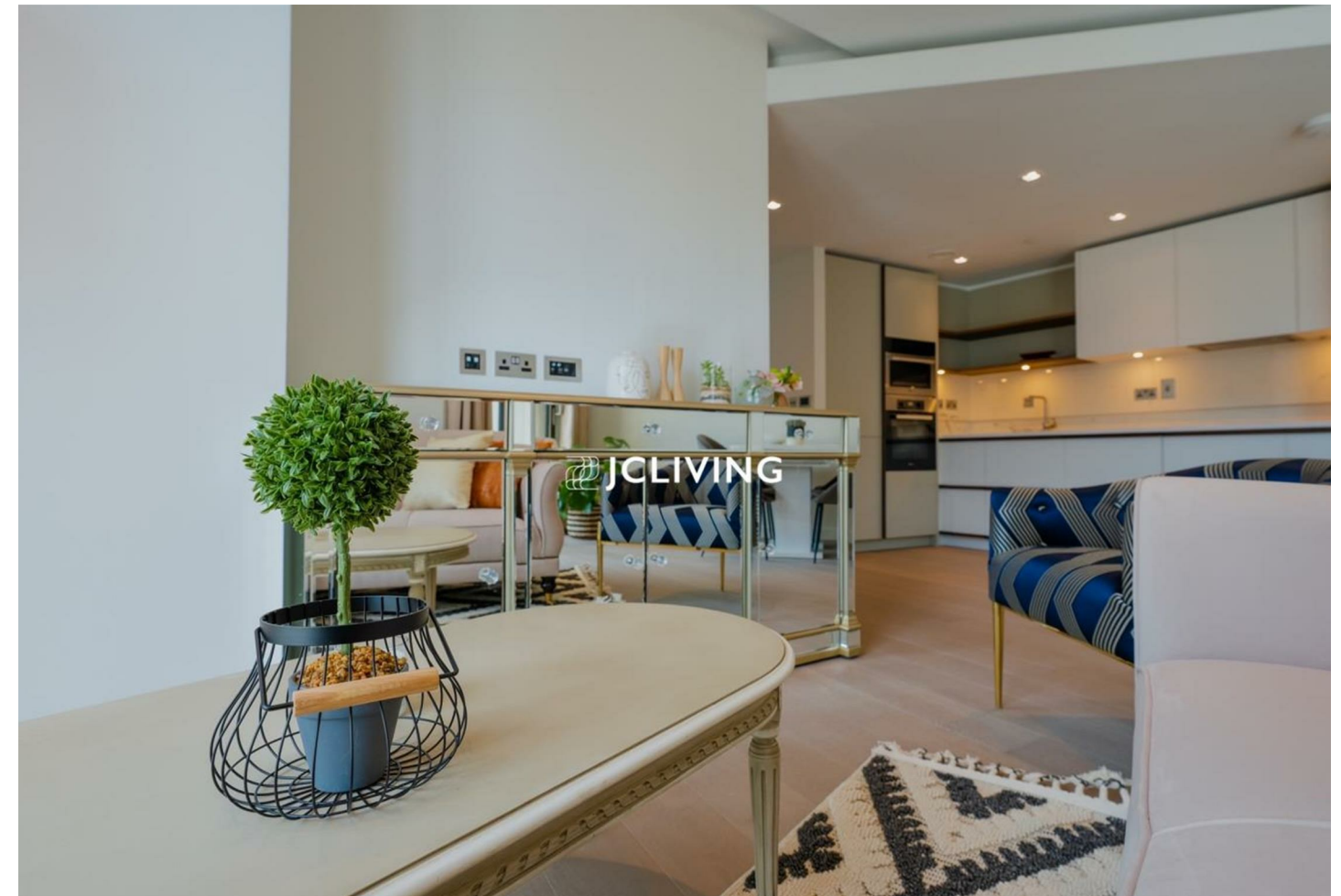
Viewings

Viewings by arrangement only. Call 02033696888 to make an appointment.

EPC Rating

B

Energy Efficiency Rating		Current	Potential
Very energy efficient - lower running costs			
(92 plus) A		86	
(81-91) B			
(69-80) C			
(55-68) D			
(39-54) E			
(21-38) F			
(1-20) G			
Not energy efficient - higher running costs			
England & Wales		EU Directive 2002/91/EC	



CN195 Apartment 113, Westmark Tower London, W2 1DB

£1,038 Per Week

Westmark Tower , London W2 1DB

*** Please quote reference JC23091096 when contacting the office ***

Nestled in the vibrant development of West End Gate, this exquisite property offers a modern living experience in a prime location. Spanning an impressive 883 square feet, the property boasts a well-designed layout that maximizes both space and comfort.

You are welcomed into a bright and airy reception room, perfect for entertaining guests or enjoying quiet evenings at home. The property features two generously sized bedrooms, providing ample space for relaxation.

Constructed in 2021, this property benefits from contemporary design and high-quality finishes throughout. The modern amenities and thoughtful touches make it an ideal choice for those seeking a comfortable and stylish home in the heart of London.

With its prime location, this house is well-connected to local amenities, transport links, and the vibrant culture that London has to offer.



Council Tax Band:

