

abbotFox

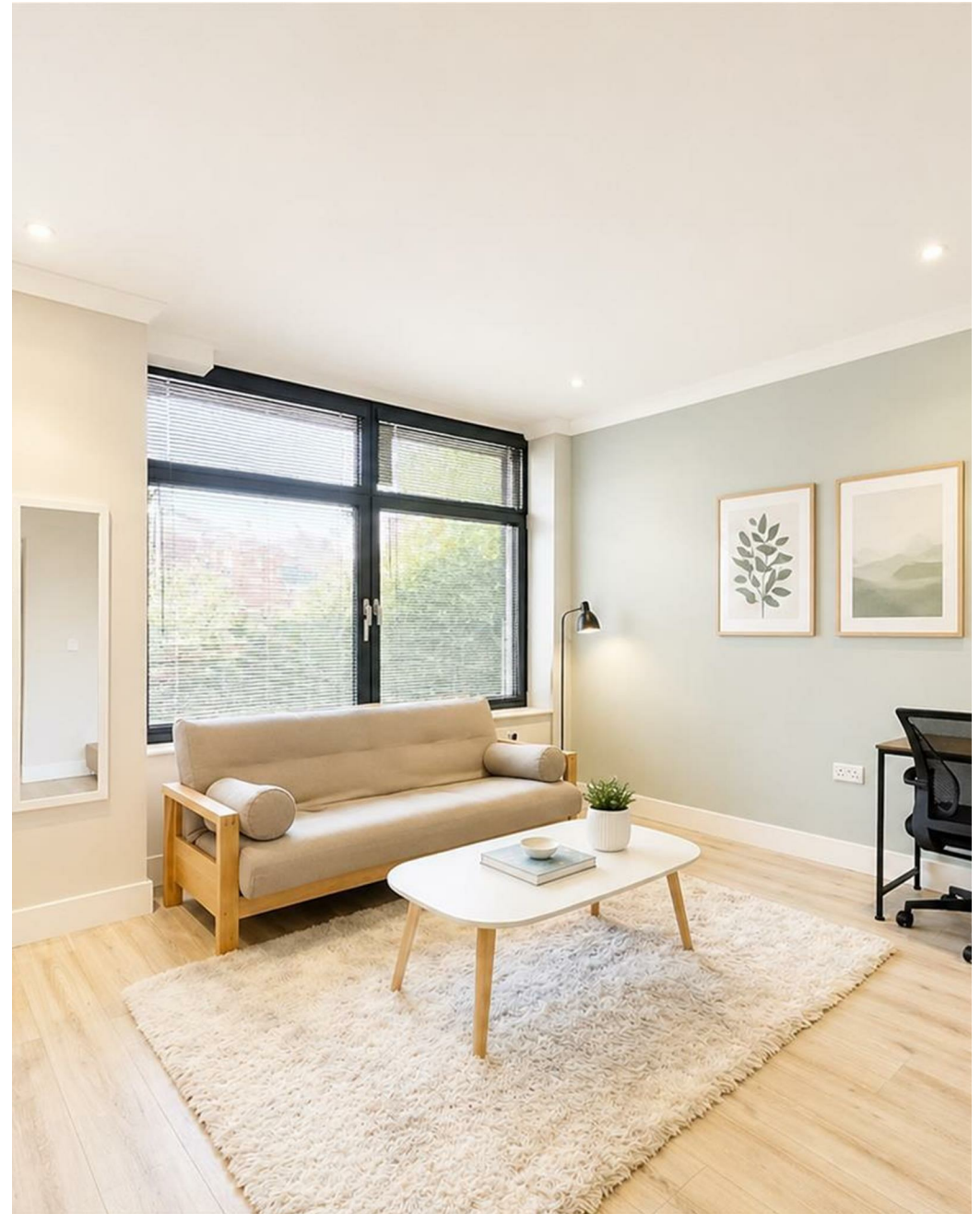


Norwich, NR1  
*£1,400 PCM*

“

We are a team of genuine individuals who hold a deep passion for both property and marketing. Collectively, we bring over 70 years of experience in the property market of Norfolk and Suffolk. Our affection for both counties runs deep, and we are enthusiastic about sharing our passion with you.

Colin McKenzie | **Branch Partner**







## THE DETAIL \_\_\_\_\_

Nestled in the vibrant city of Norwich, this purpose-built apartment offers a modern living experience in the sought-after NR1 postcode. With its contemporary design and fresh appeal, this new build property is perfect for those seeking a stylish and comfortable home.

The apartment features a welcoming reception room, providing an ideal space for relaxation or entertaining guests. The two well-proportioned bedrooms offer ample space for rest and privacy, making it suitable for individuals, couples, or small families. The bathroom is thoughtfully designed, ensuring convenience and comfort for daily routines.

Situated in a lively area, residents will enjoy easy access to a variety of local amenities, including shops, cafes, and parks. The vibrant culture of Norwich is just a stone's throw away, with its rich history and numerous attractions waiting to be explored.

This apartment not only boasts modern living spaces but also benefits from the energy efficiency and low maintenance that comes with a new build. Whether you are looking to invest or find your next home, this property presents an excellent opportunity in a desirable location. Don't miss the chance to make this contemporary apartment your own in the heart of Norwich.

Agent note: The contents within some of these images have been added digitally for illustrative purposes only.

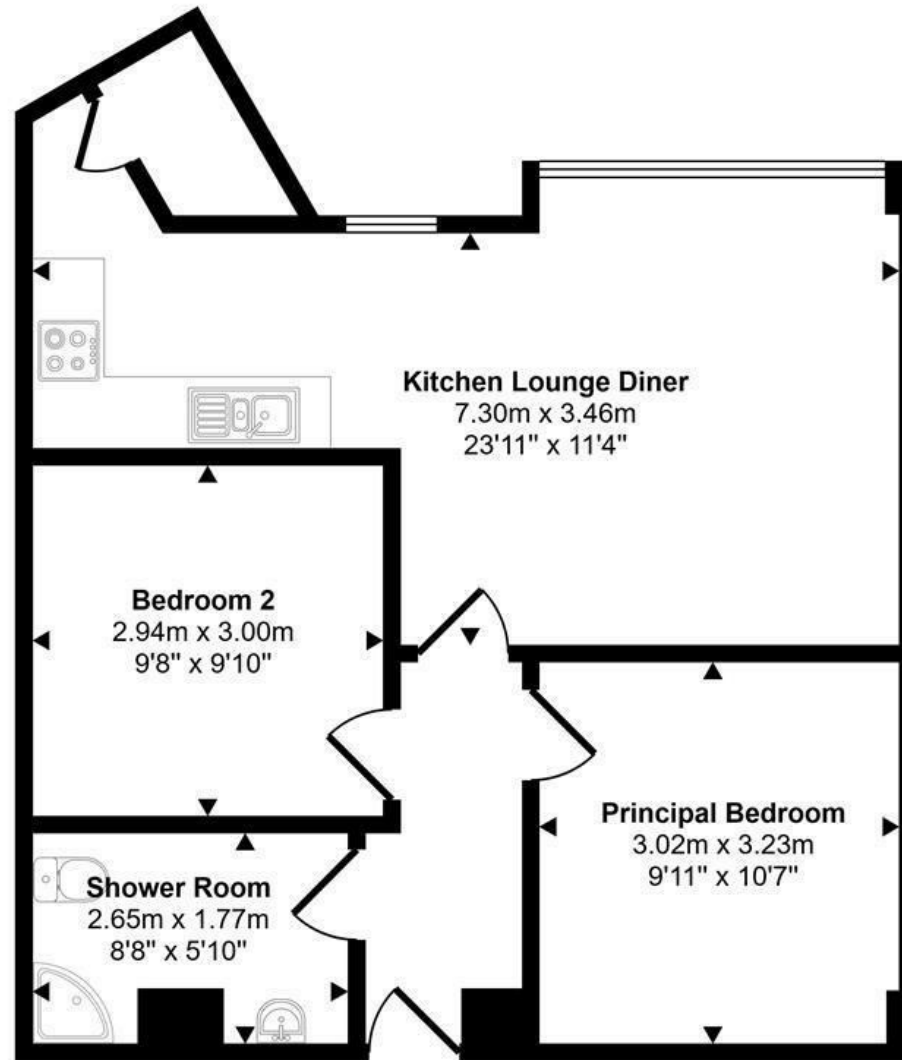




## THE HIGHLIGHTS \_\_\_\_\_

- City centre apartment
- Concierge Service
- Two double bedrooms
- Open plan living space
- Modern kitchen
- Family bathroom
- Norwich's most exciting development

54 sq m / 582 sq ft



Floorplan

*Let's talk*

01603 660000

sales@abbotfox.co.uk

@abbotfox

This floorplan is only for illustrative purposes and is not to scale. Measurements of rooms, doors, windows, and any items are approximate.

EPC RATING -

Disclaimer – In accordance with the Property Misdescriptions Act, the company abbotFox gives notice that all descriptions, references to condition, necessary permissions for use and other details are given in good faith and believed to be correct, but any purchaser should not rely on them as statements of fact, and must satisfy themselves by inspection or other means, as to their accuracy.